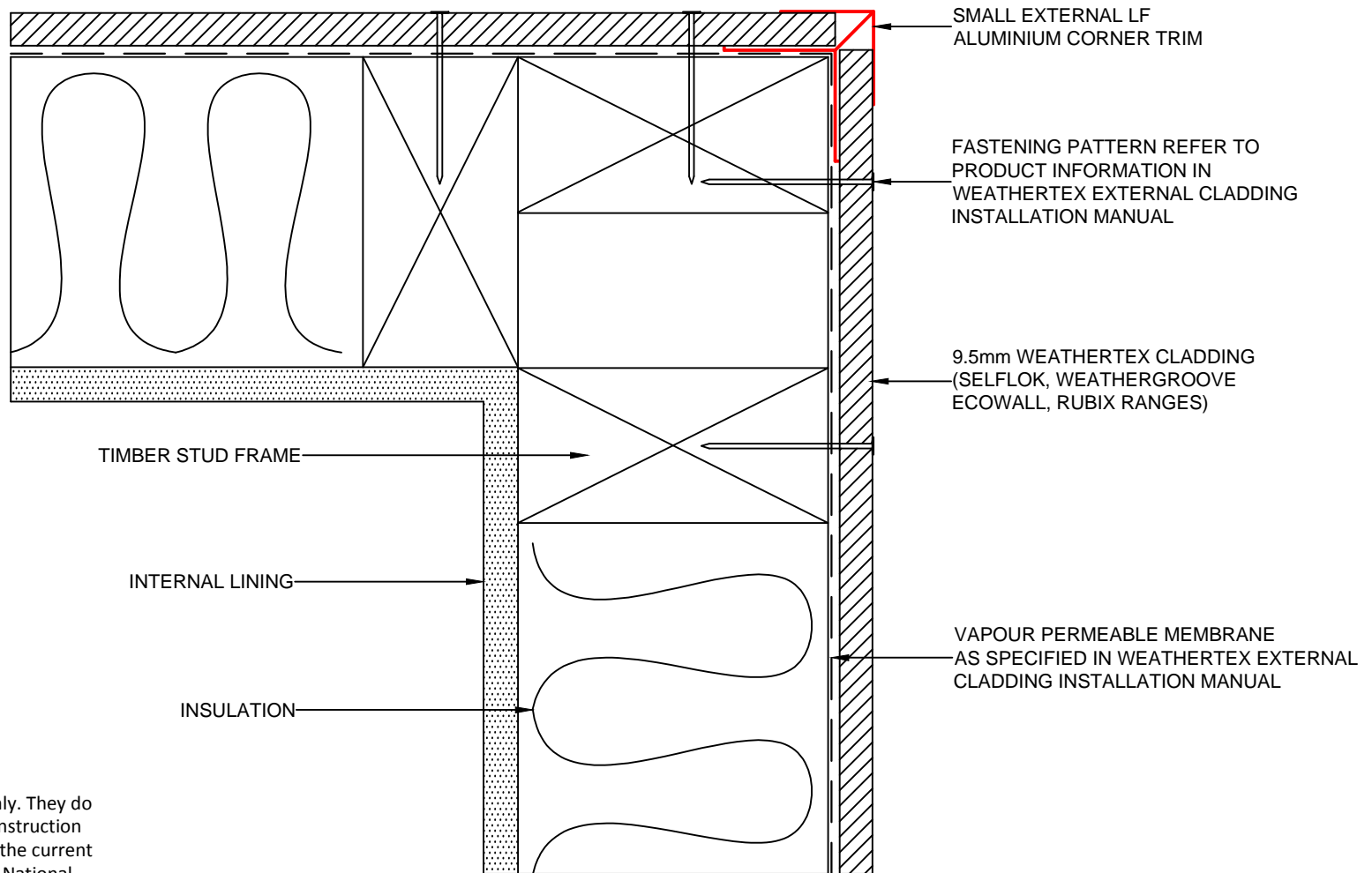



**WEATHERTEX
CONSTRUCTION
DETAILS**

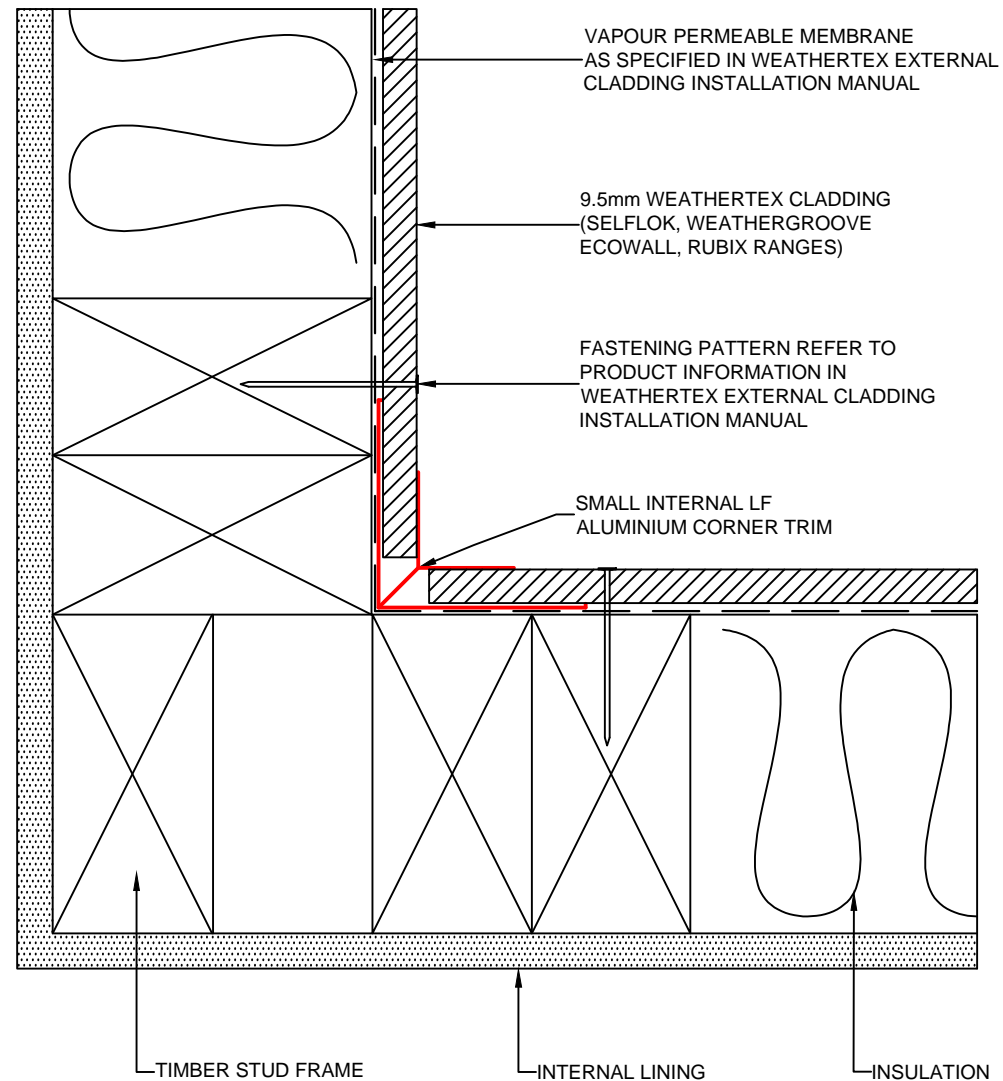
RUBIX PANELS

DIRECT FIX
CONSTRUCTION



These drawings are for information only. They do not contain full details required for construction and must be used in conjunction with the current issue WeatherTex Installation Manual, National Construction Code and any other State and Local Regulations. WeatherTex recommends gaining professional advice to ensure the drawings are suitable for your project. WeatherTex accepts no liability in respect to the use of these drawings.

	DRAWING NAME:	SCALE:	DRAWN BY:	CHECKED BY:	DATE:	DRAWING No.:	SHT SIZE
	DIRECT FIX INSTALLATION - SMALL EXTERNAL LF CORNER (SELFLOK, WEATHERGROOVE, ECOWALL, RUBIX RANGES)	NTS	A.MOATE	R.STUART	07.07.20	CD-DF-1	A4



These drawings are for information only. They do not contain full details required for construction and must be used in conjunction with the current issue Weathertex Installation Manual, National Construction Code and any other State and Local Regulations. Weathertex recommends gaining professional advice to ensure the drawings are suitable for your project. Weathertex accepts no liability in respect to the use of these drawings.



DRAWING NAME:
DIRECT FIX INSTALLATION - SMALL INTERNAL LF CORNER
(SELFLOK, WEATHERGROOVE, ECOWALL, RUBIX RANGES)

SCALE:
NTS

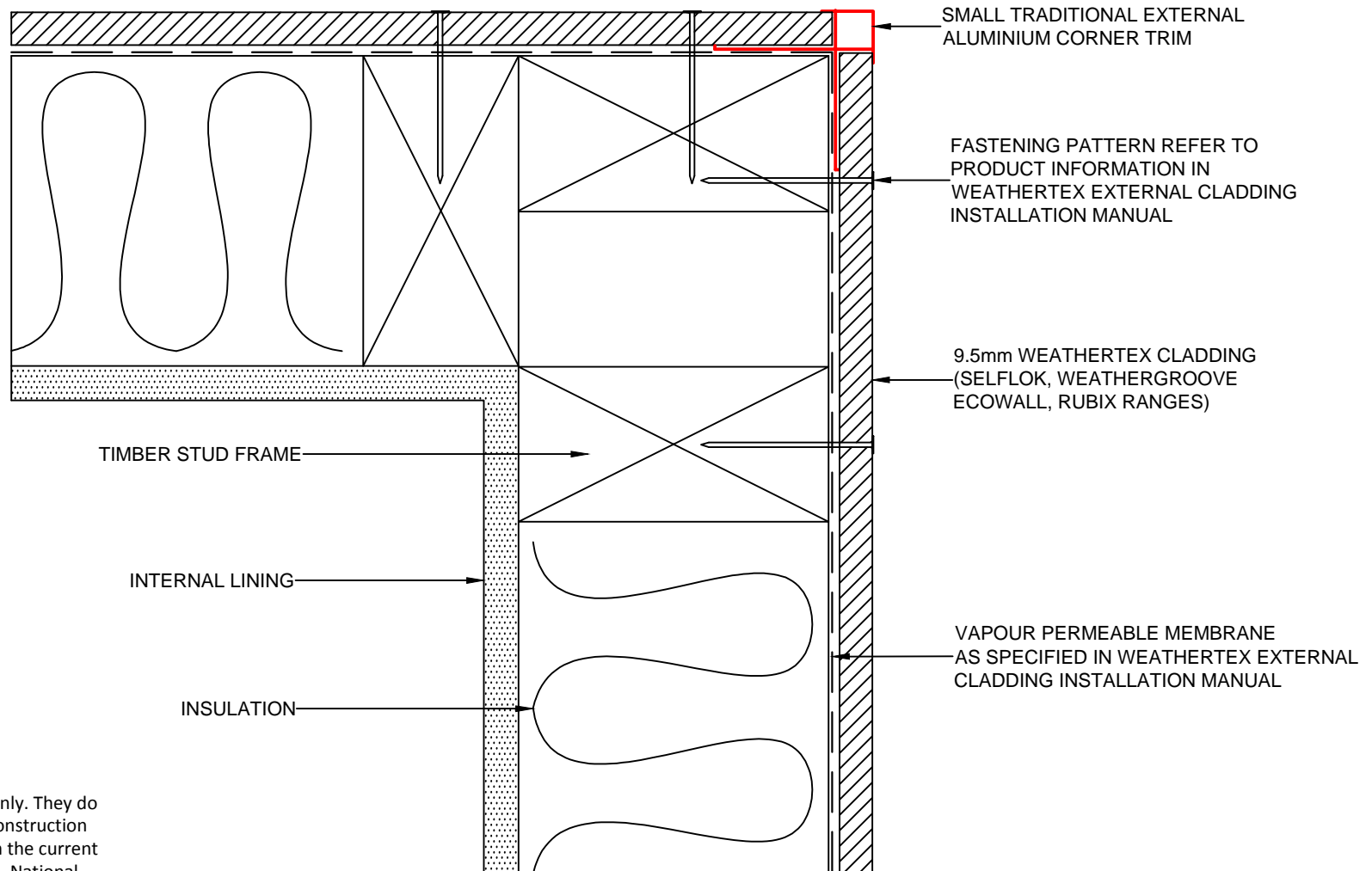
DRAWN BY:
A.MOATE

CHECKED BY:
R.STUART

DATE:
07.07.20

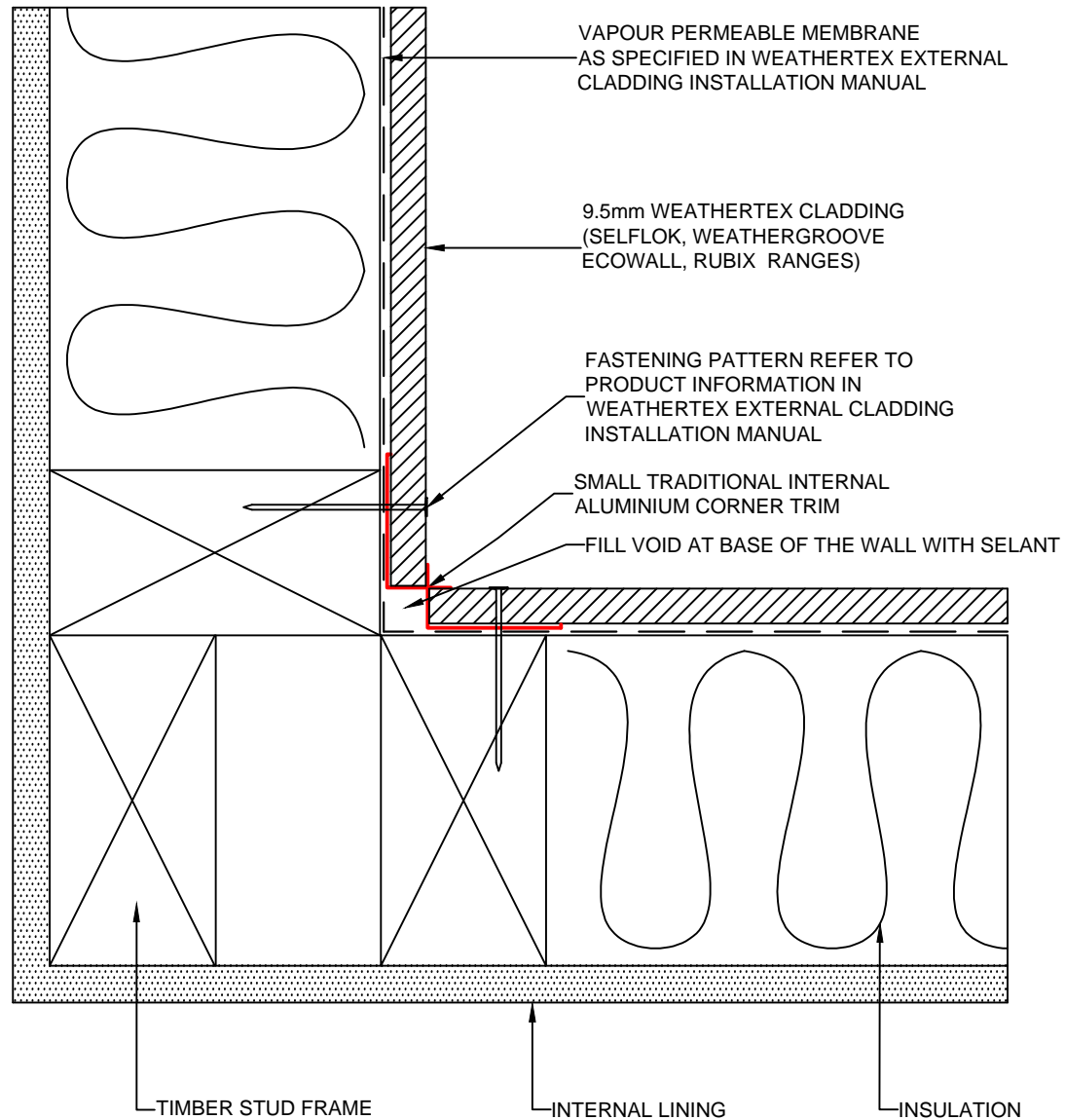
DRAWING No.:
CD-DF-2

SHT SIZE
A4



These drawings are for information only. They do not contain full details required for construction and must be used in conjunction with the current issue Weathertex Installation Manual, National Construction Code and any other State and Local Regulations. Weathertex recommends gaining professional advice to ensure the drawings are suitable for your project. Weathertex accepts no liability in respect to the use of these drawings.

	DRAWING NAME: DIRECT FIX INSTALLATION - SMALL EXTERNAL TRADITIONAL CORNER (SELFLOK, WEATHERGROOVE, ECOWALL, RUBIX RANGES)	SCALE: NTS	DRAWN BY: A.MOATE	CHECKED BY: R.STUART	DATE: 07.07.20	DRAWING No.: CD-DF-3	SHT SIZE A4



These drawings are for information only. They do not contain full details required for construction and must be used in conjunction with the current issue WeatherTex Installation Manual, National Construction Code and any other State and Local Regulations. WeatherTex recommends gaining professional advice to ensure the drawings are suitable for your project. WeatherTex accepts no liability in respect to the use of these drawings.



DRAWING NAME:
DIRECT FIX INSTALLATION - SMALL INTERNAL TRADITIONAL CORNER
(SELFLOK, WEATHERGROOVE, ECOWALL, RUBIX RANGES)

SCALE:
NTS

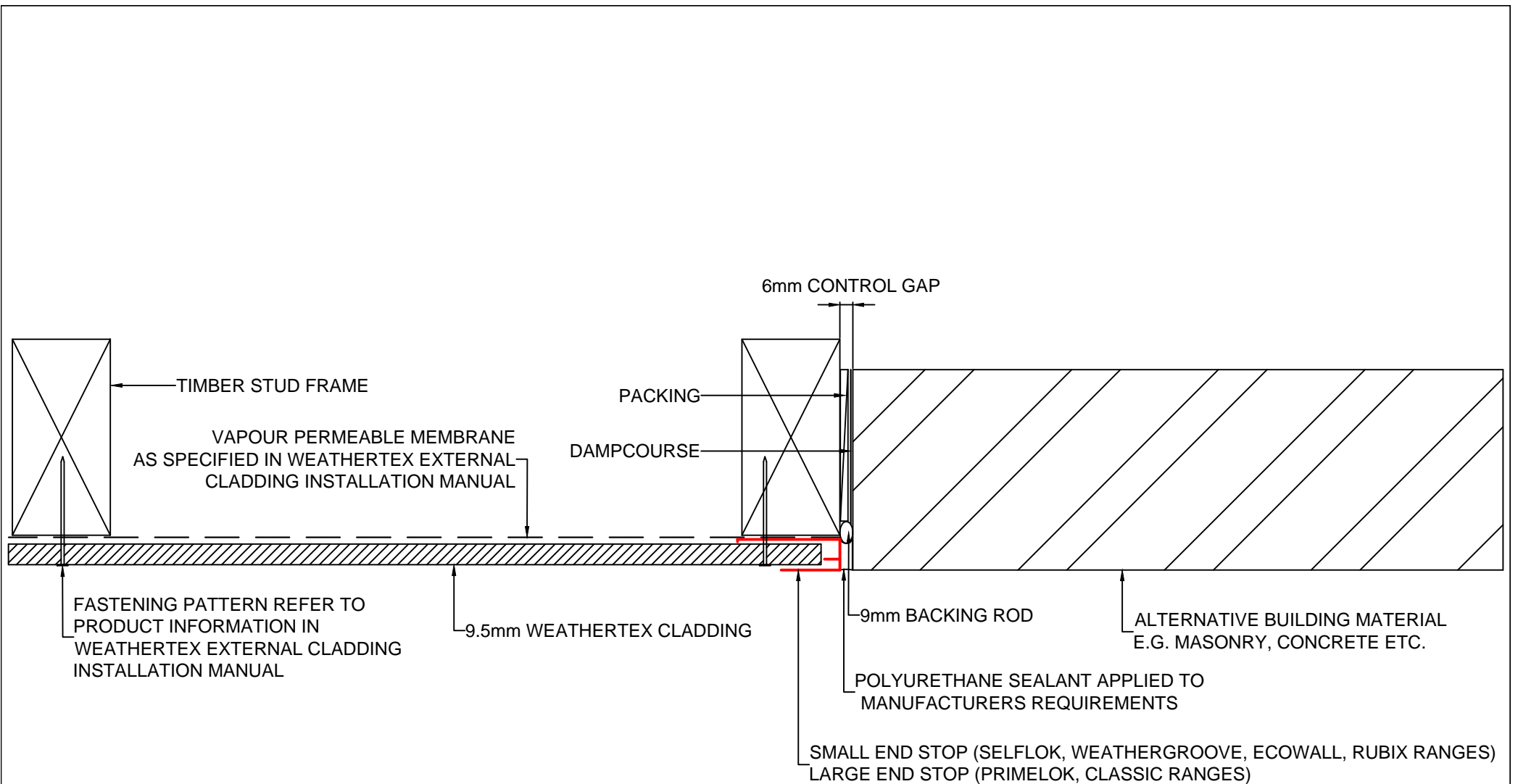
DRAWN BY:
A.MOATE

CHECKED BY:
R.STUART


DATE:
07.07.20

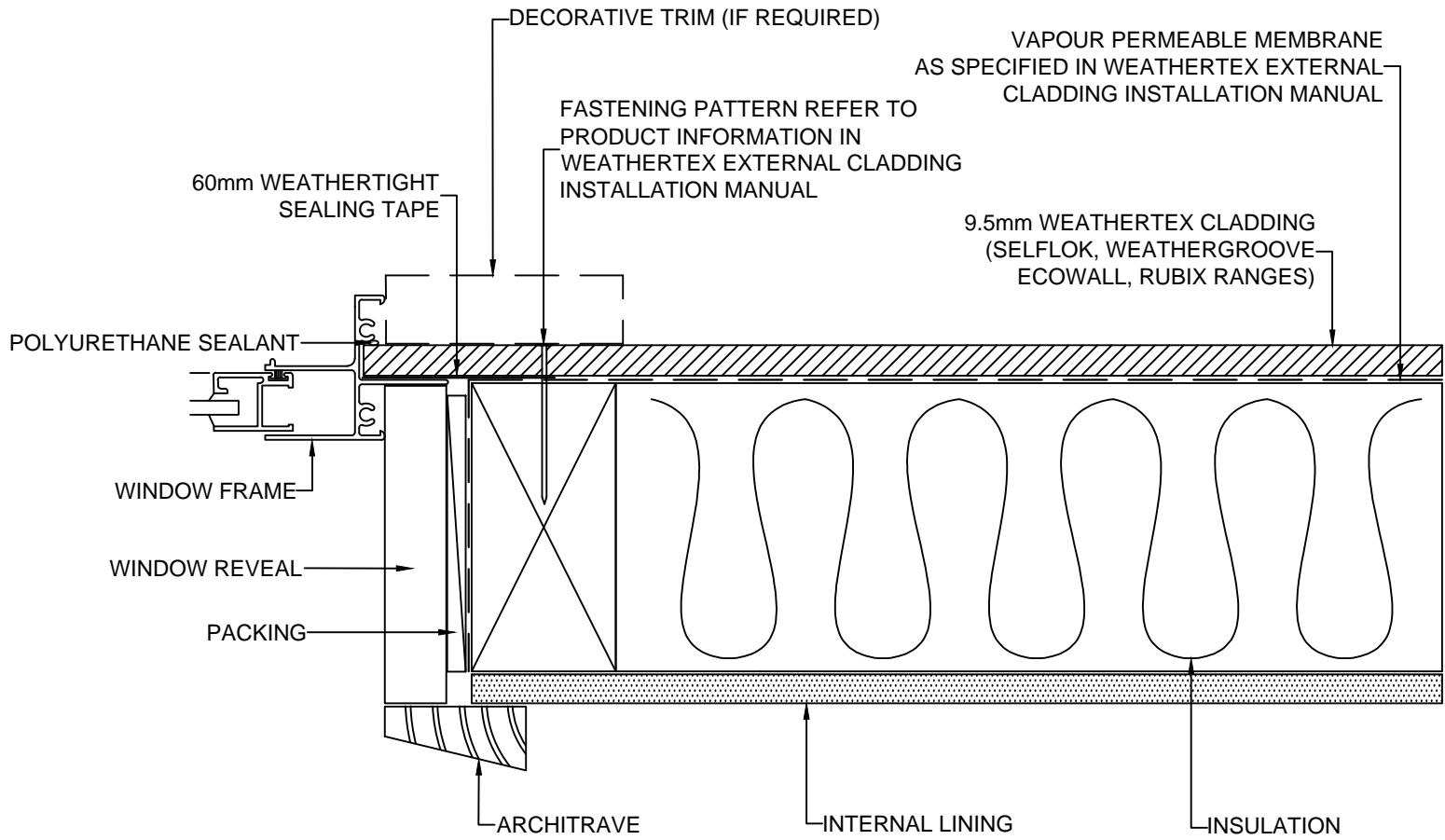
DRAWING No.:
CD-DF-4

SHT SIZE
A4



These drawings are for information only. They do not contain full details required for construction and must be used in conjunction with the current issue Weatherdex Installation Manual, National Construction Code and any other State and Local Regulations. Weatherdex recommends gaining professional advice to ensure the drawings are suitable for your project. Weatherdex accepts no liability in respect to the use of these drawings.

	DRAWING NAME: DIRECT FIX INSTALLATION - END STOP SEPARATION FROM ALTERNATIVE BUILDING MATERIALS (ALL RANGES)	SCALE: NTS	DRAWN BY: A.MOATE	CHECKED BY: R.STUART	DATE: 07.07.20	DRAWING No.: CD-DF-7	SHT SIZE A4

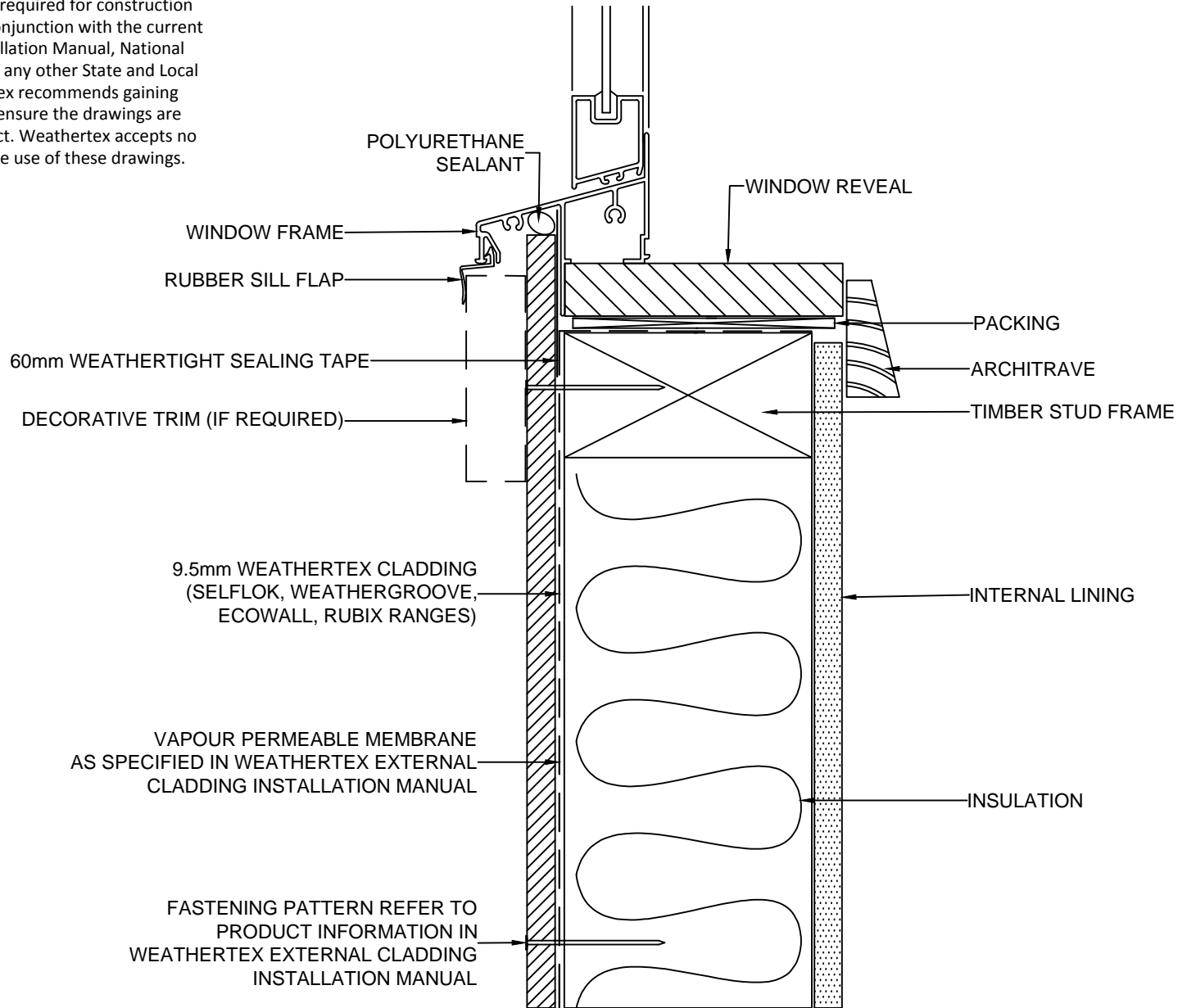


These drawings are for information only. They do not contain full details required for construction and must be used in conjunction with the current issue Weathertext Installation Manual, National Construction Code and any other State and Local Regulations. Weathertext recommends gaining professional advice to ensure the drawings are suitable for your project. Weathertext accepts no liability in respect to the use of these drawings.

WINDOW MEMBRANE TRIM DETAIL TO BE INSTALLED TO AS4200.2:2017 Fig 4.7

	DRAWING NAME: DIRECT FIX INSTALLATION - WINDOW FRAME JAMB (SELFLOK, WEATHERGROOVE, ECOWALL, RUBIX RANGES)	SCALE: NTS	DRAWN BY: A.MOATE	CHECKED BY: R.STUART	DATE: 07.07.20	DRAWING No.: CD-DF-8	SHT SIZE A4

These drawings are for information only. They do not contain full details required for construction and must be used in conjunction with the current issue Weathertex Installation Manual, National Construction Code and any other State and Local Regulations. Weathertex recommends gaining professional advice to ensure the drawings are suitable for your project. Weathertex accepts no liability in respect to the use of these drawings.



WINDOW MEMBRANE TRIM DETAIL TO BE INSTALLED TO AS4200.2:2017 Fig 4.7



DRAWING NAME:
DIRECT FIX INSTALLATION - WINDOW FRAME SILL
(SELFLOK, WEATHERGROOVE, ECOWALL, RUBIX RANGES)

SCALE:
NTS

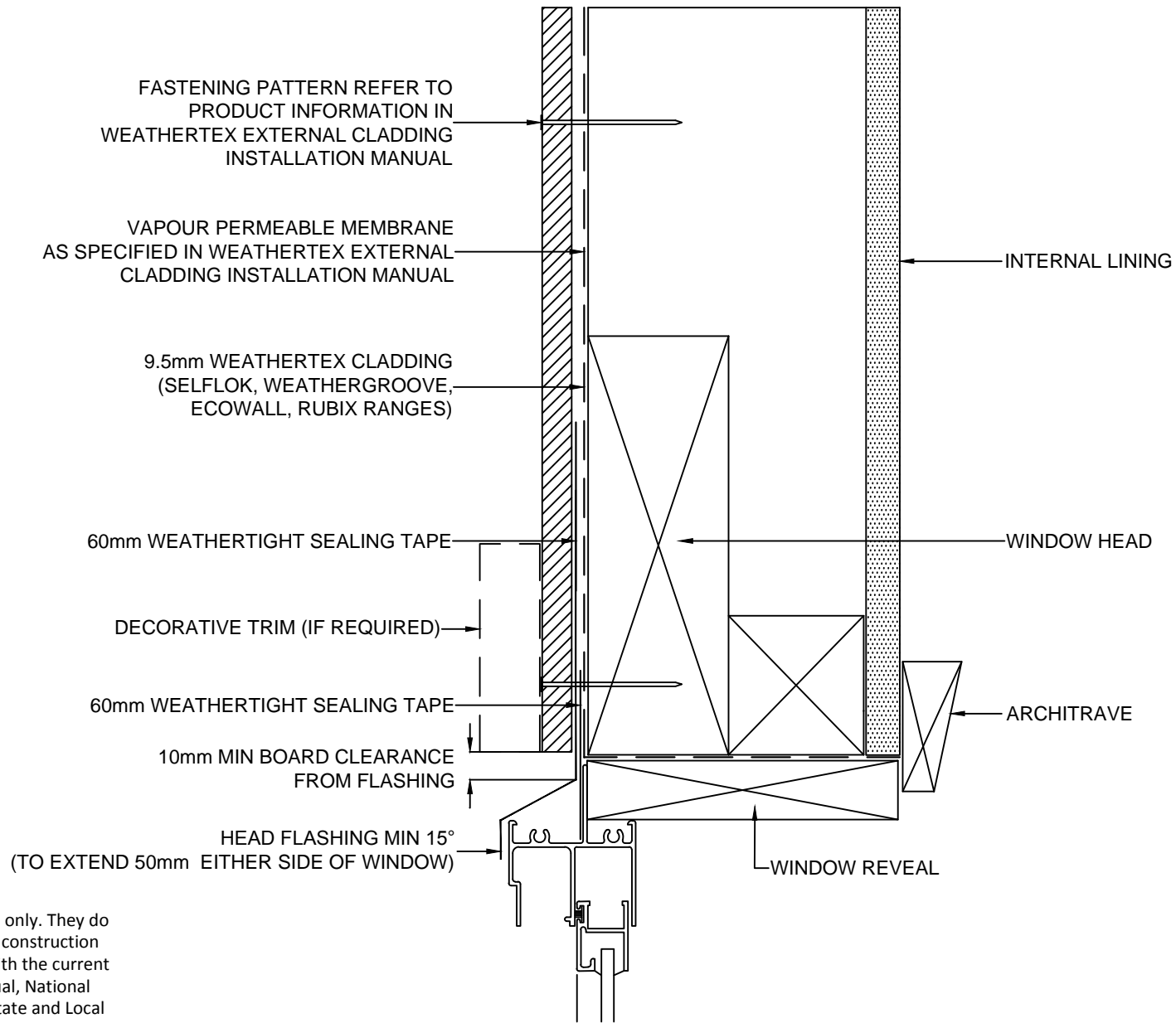
DRAWN BY:
A.MOATE

CHECKED BY:
R.STUART

DATE:
07.07.20

DRAWING No.:
CD-DF-9

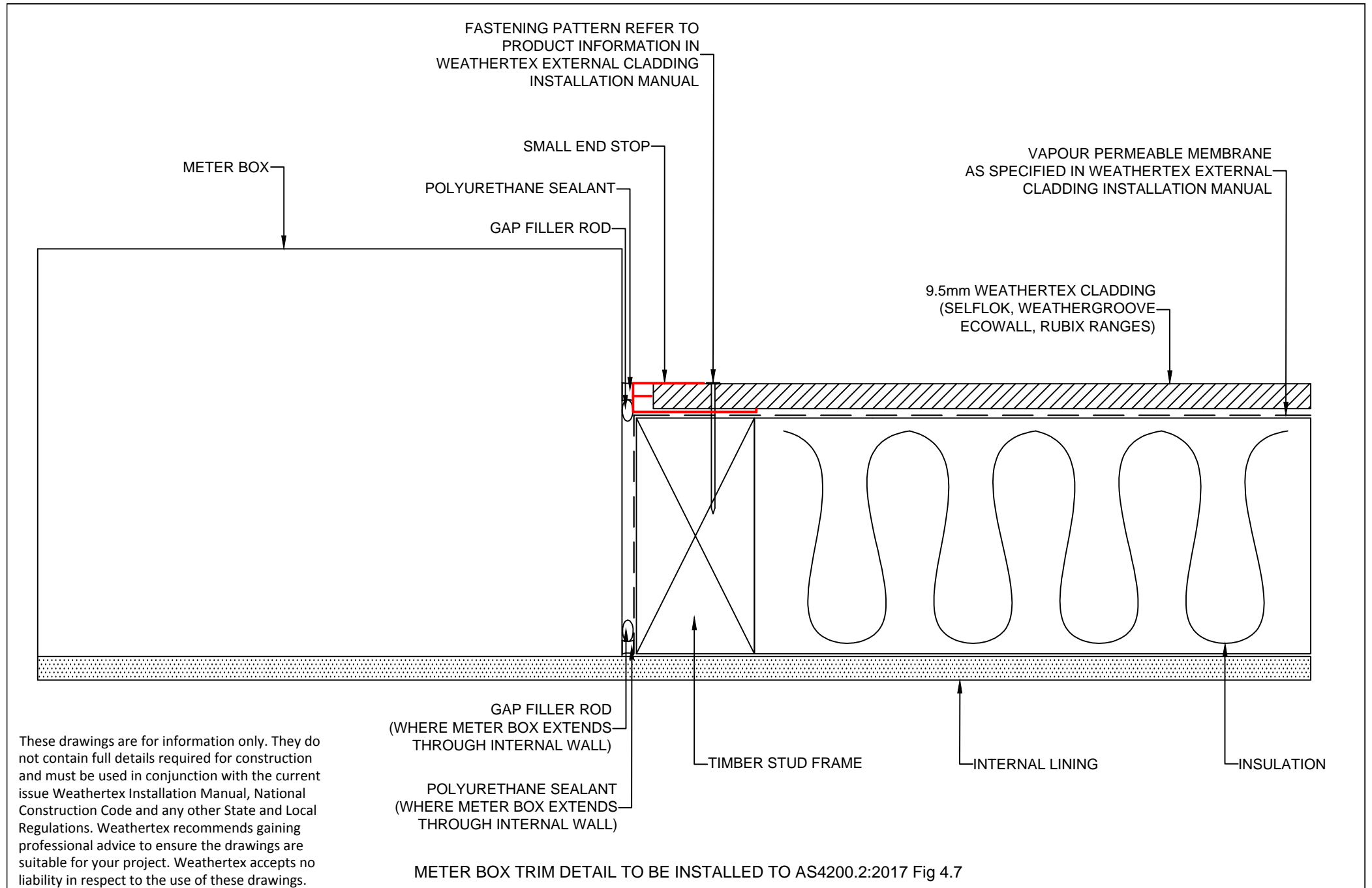
SHT SIZE
A4



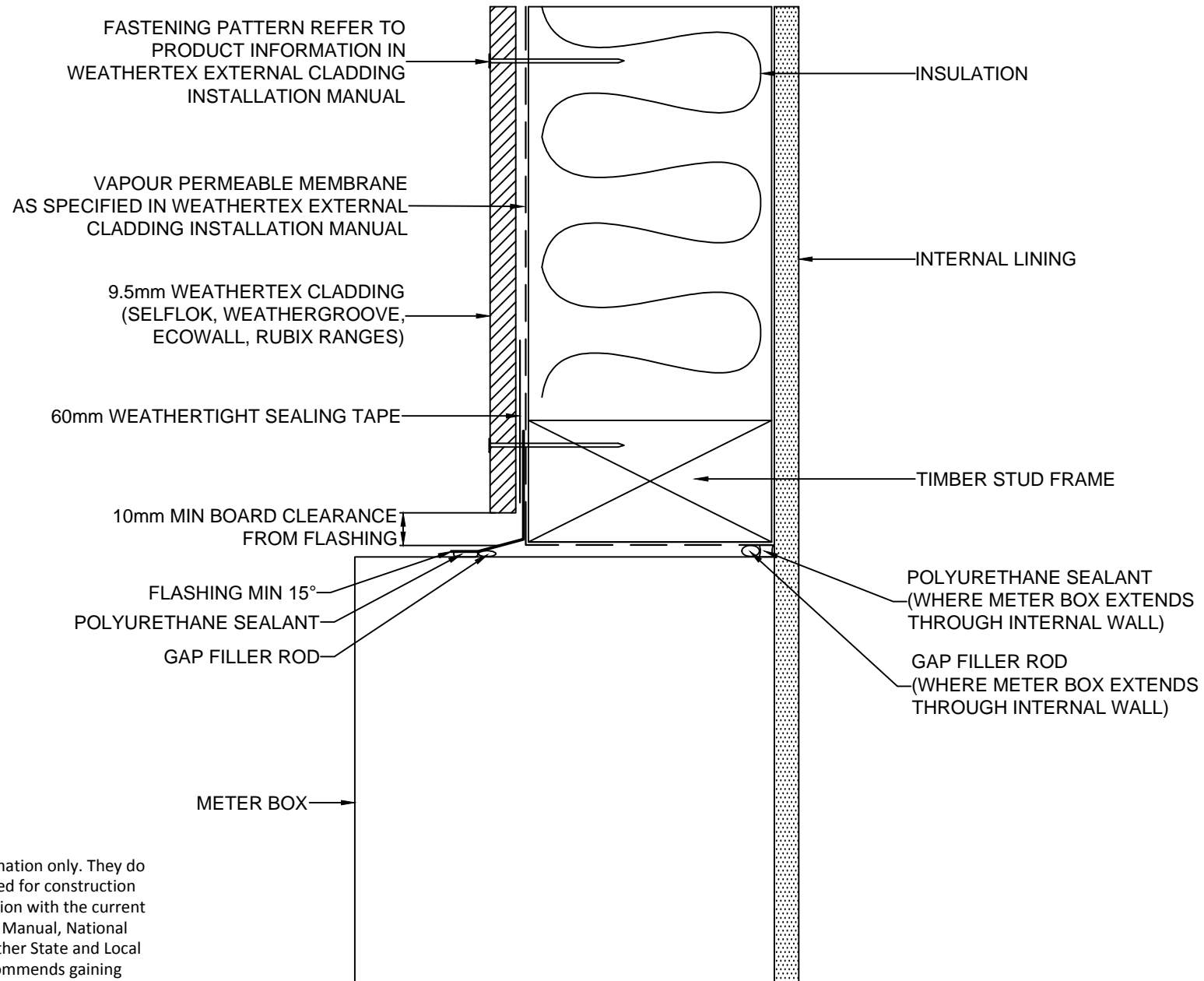
These drawings are for information only. They do not contain full details required for construction and must be used in conjunction with the current issue Weathertex Installation Manual, National Construction Code and any other State and Local Regulations. Weathertex recommends gaining professional advice to ensure the drawings are suitable for your project. Weathertex accepts no liability in respect to the use of these drawings.

WINDOW MEMBRANE TRIM DETAIL TO BE INSTALLED TO AS4200.2:2017 Fig 4.7

	DRAWING NAME:	SCALE:	DRAWN BY:	CHECKED BY:	DATE:	DRAWING No.:	SHT SIZE
	DIRECT FIX INSTALLATION - WINDOW FRAME HEAD (SELFLOK, WEATHERGROOVE, ECOWALL, RUBIX RANGES)	NTS	A.MOATE	R.STUART	03.07.20	CD-DF-10	A4



	DRAWING NAME: DIRECT FIX INSTALLATION - METER BOX JAMB (SELFLOK, WEATHERGROOVE, ECOWALL, RUBIX RANGES)	SCALE: NTS	DRAWN BY: A.MOATE	CHECKED BY: R.STUART	DATE: 08.07.20	DRAWING No.: CD-DF-14	SHT SIZE A4
--	--	---------------	----------------------	-------------------------	-------------------	--------------------------	----------------

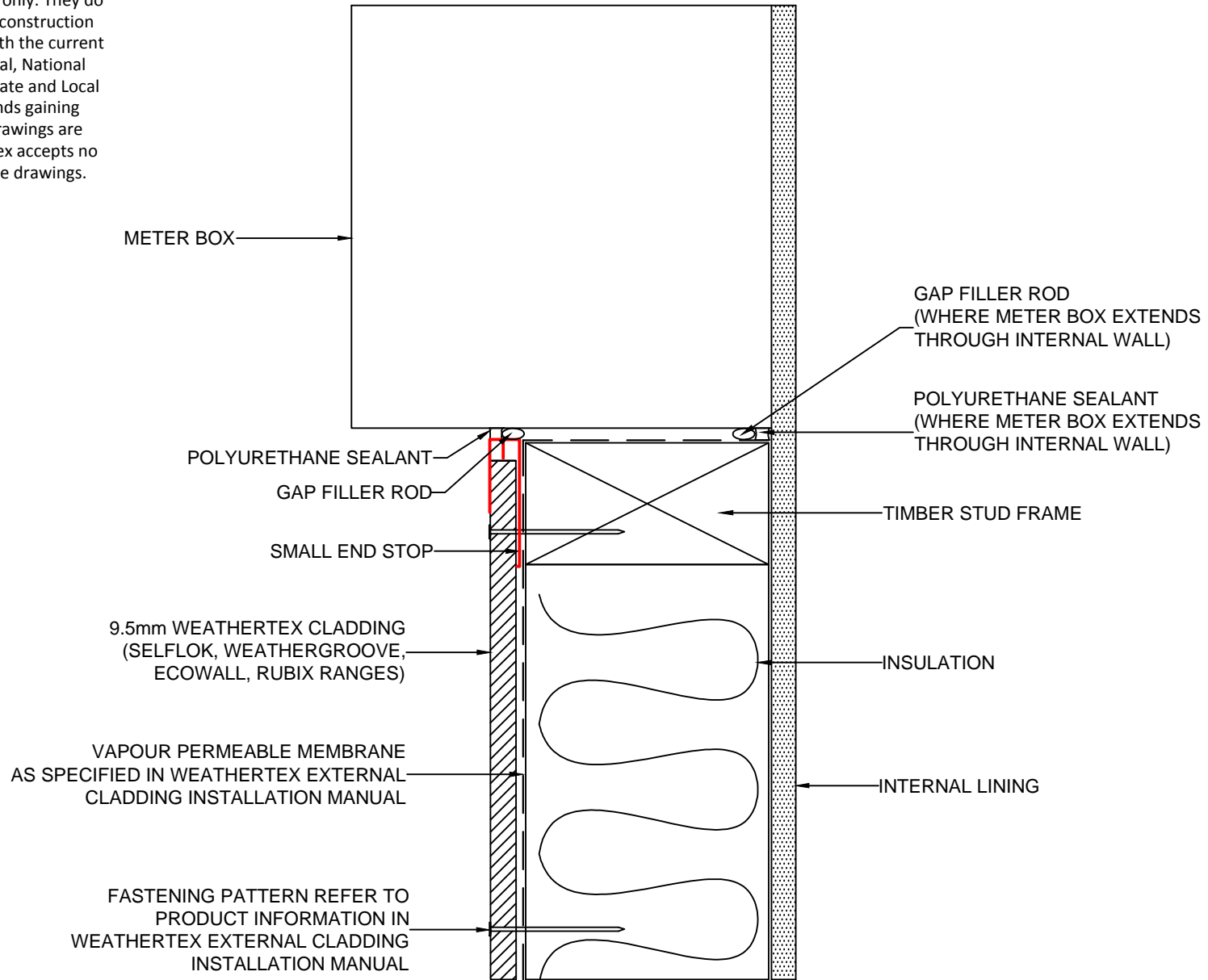


These drawings are for information only. They do not contain full details required for construction and must be used in conjunction with the current issue Weathertex Installation Manual, National Construction Code and any other State and Local Regulations. Weathertex recommends gaining professional advice to ensure the drawings are suitable for your project. Weathertex accepts no liability in respect to the use of these drawings.

METER BOX MEMBRANE TRIM DETAIL TO BE INSTALLED TO AS4200.2:2017 Fig 4.7

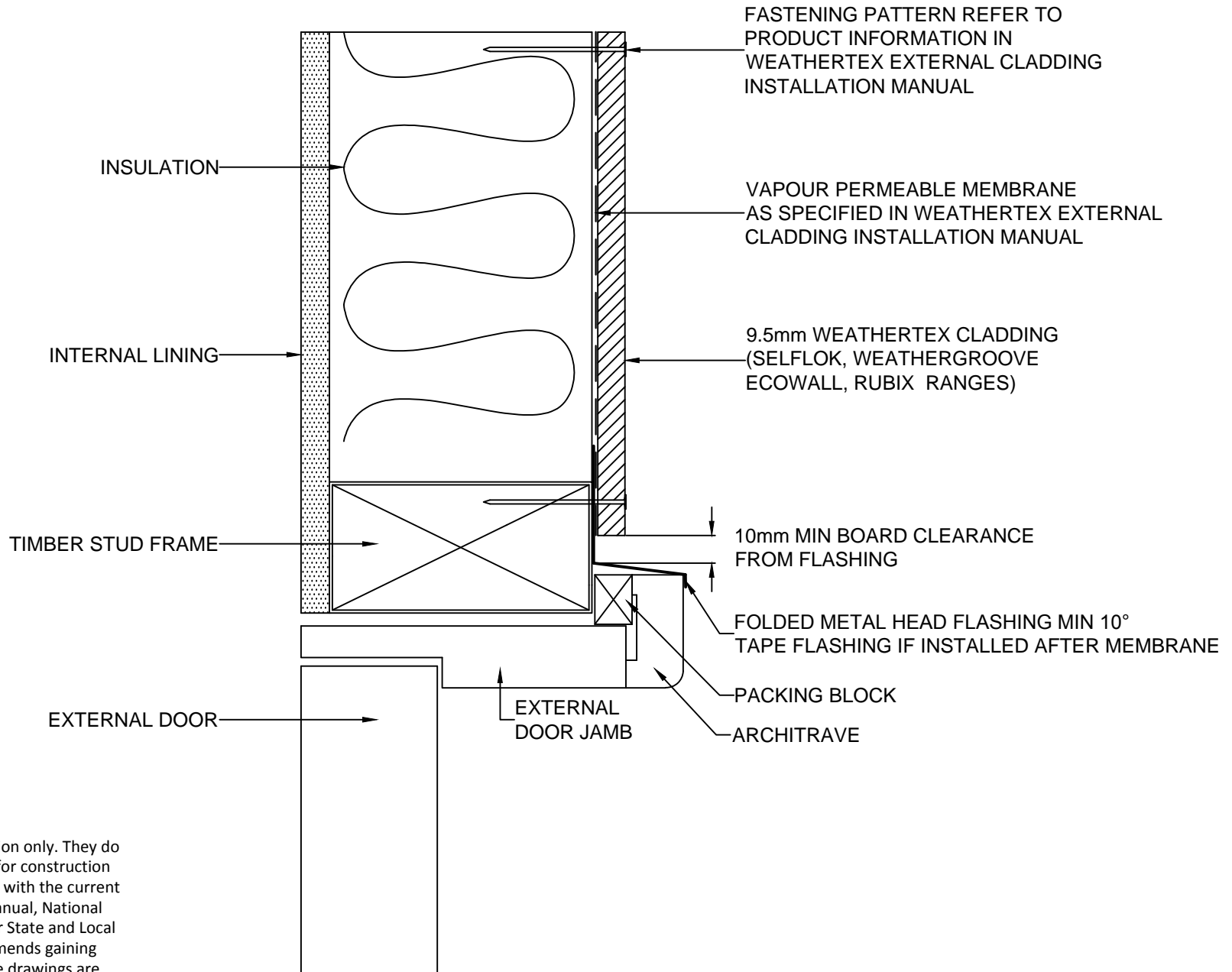
	DRAWING NAME:	SCALE:	DRAWN BY:	CHECKED BY:	DATE:	DRAWING No.:	SHT SIZE
	DIRECT FIX INSTALLATION - METER BOX HEAD (SELFLOK, WEATHERGROOVE, ECOWALL, RUBIX RANGES)	NTS	A.MOATE	R.STUART	08.07.20	CD-DF-15	A4

These drawings are for information only. They do not contain full details required for construction and must be used in conjunction with the current issue Weathertex Installation Manual, National Construction Code and any other State and Local Regulations. Weathertex recommends gaining professional advice to ensure the drawings are suitable for your project. Weathertex accepts no liability in respect to the use of these drawings.




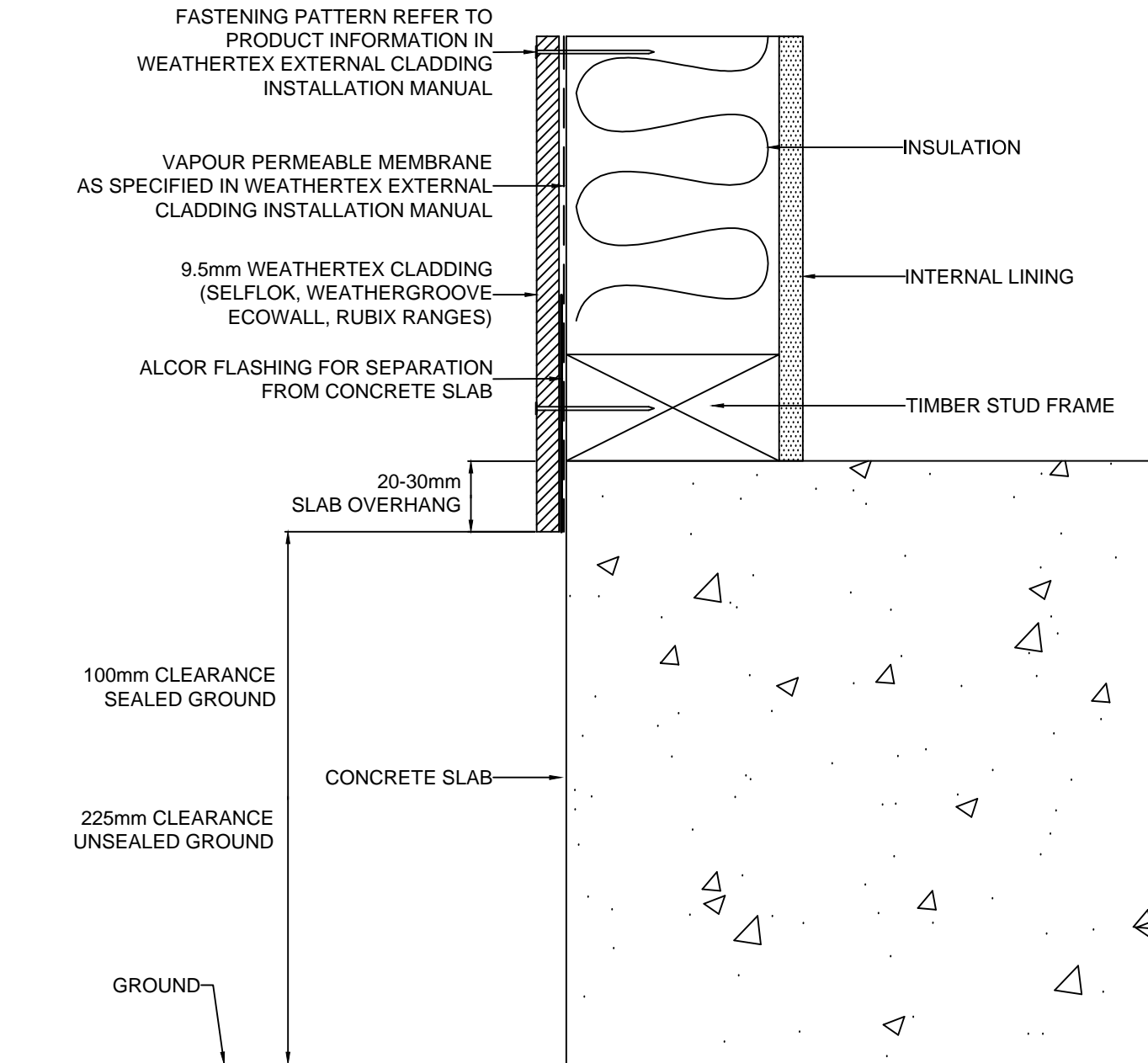
METER BOX MEMBRANE TRIM DETAIL TO BE INSTALLED TO AS4200.2:2017 Fig 4.7

	DRAWING NAME:	SCALE:	DRAWN BY:	CHECKED BY:	DATE:	DRAWING No.:	SHT SIZE
	DIRECT FIX INSTALLATION - METER BOX SILL (SELFLOK, WEATHERGROOVE, ECOWALL, RUBIX RANGES)		NTS	A.MOATE	R.STUART	08.07.20	CD-DF-16



These drawings are for information only. They do not contain full details required for construction and must be used in conjunction with the current issue Weatherdex Installation Manual, National Construction Code and any other State and Local Regulations. Weatherdex recommends gaining professional advice to ensure the drawings are suitable for your project. Weatherdex accepts no liability in respect to the use of these drawings.

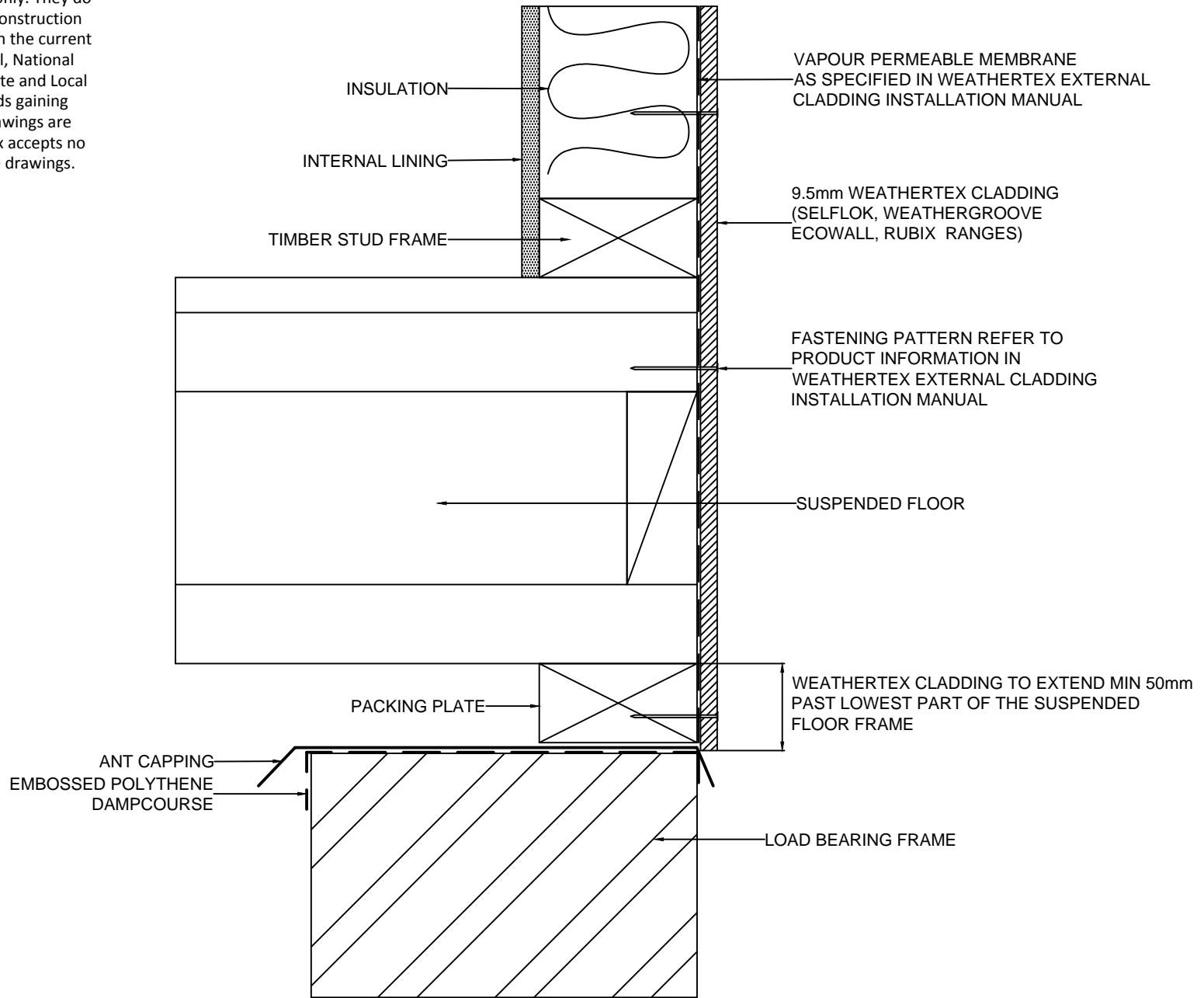
	DRAWING NAME: DIRECT FIX INSTALLATION - DOOR HEAD (SELFLOK, WEATHERGROOVE, ECOWALL, RUBIX RANGES)	SCALE: NTS	DRAWN BY: A.MOATE	CHECKED BY: R.STUART	DATE: 08.07.20	DRAWING No.: CD-DF-20	SHT SIZE A4



These drawings are for information only. They do not contain full details required for construction and must be used in conjunction with the current issue WeatherTex Installation Manual, National Construction Code and any other State and Local Regulations. WeatherTex recommends gaining professional advice to ensure the drawings are suitable for your project. WeatherTex accepts no liability in respect to the use of these drawings.

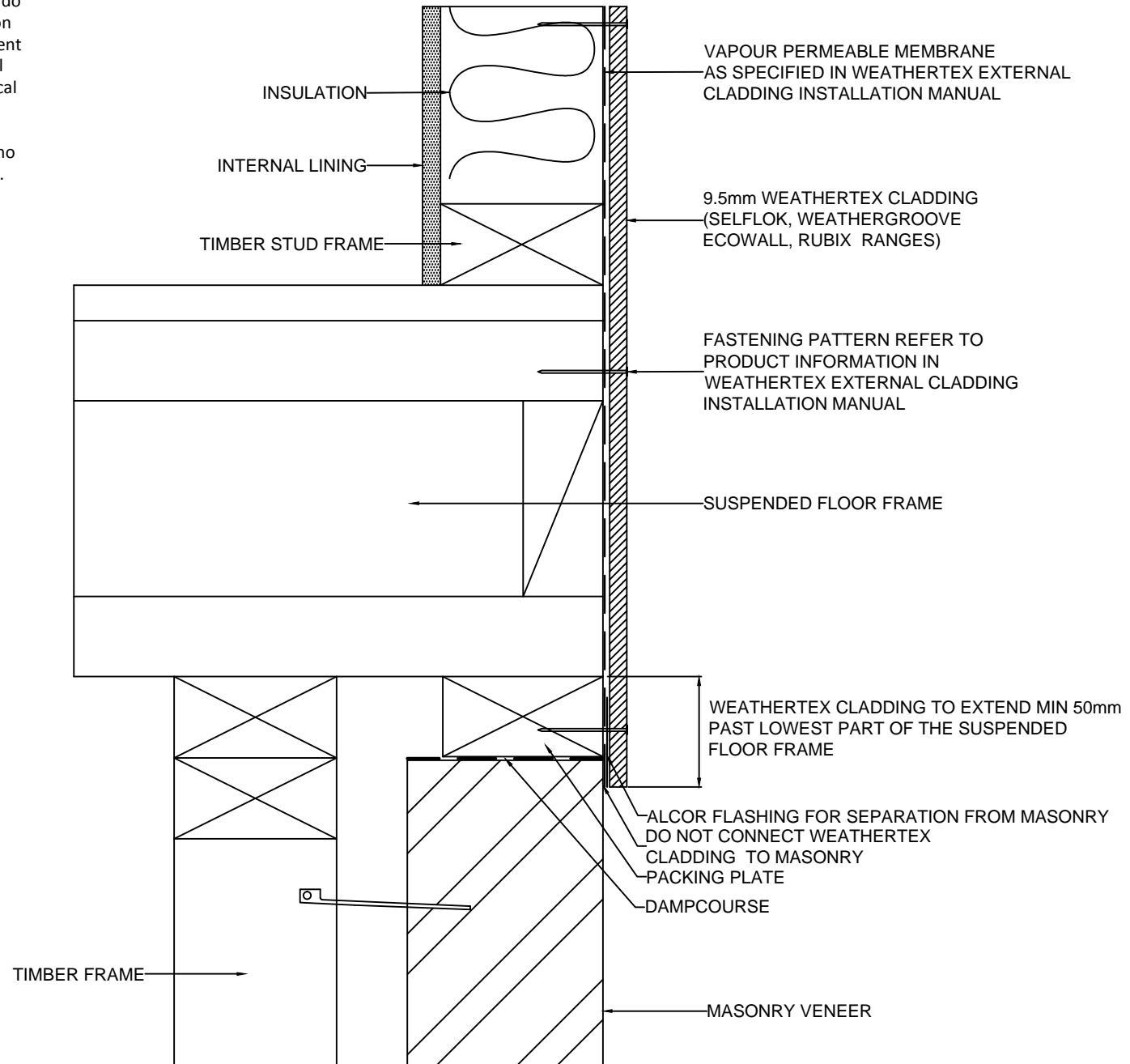
	DRAWING NAME: DIRECT FIX INSTALLATION - CONCRETE SLAB GROUND CLEARANCE (SELFLOK, WEATHERGROOVE, ECOWALL, RUBIX RANGES)	SCALE: NTS	DRAWN BY: A.MOATE	CHECKED BY: R.STUART	DATE: 08.07.20	DRAWING No.: CD-DF-22	SHT SIZE A4
--	--	---------------	----------------------	-------------------------	-------------------	--------------------------	----------------

These drawings are for information only. They do not contain full details required for construction and must be used in conjunction with the current issue Weathertex Installation Manual, National Construction Code and any other State and Local Regulations. Weathertex recommends gaining professional advice to ensure the drawings are suitable for your project. Weathertex accepts no liability in respect to the use of these drawings.



	DRAWING NAME:	SCALE:	DRAWN BY:	CHECKED BY:	DATE:	DRAWING No.:	SHT SIZE
	DIRECT FIX INSTALLATION - CLADDING OVER PIER (SELFLOK, WEATHERGROOVE, ECOWALL, RUBIX RANGES)		NTS	A.MOATE	R.STUART	09.07.20	CD-DF-24

These drawings are for information only. They do not contain full details required for construction and must be used in conjunction with the current issue Weathertex Installation Manual, National Construction Code and any other State and Local Regulations. Weathertex recommends gaining professional advice to ensure the drawings are suitable for your project. Weathertex accepts no liability in respect to the use of these drawings.



DRAWING NAME:
DIRECT FIX INSTALLATION - FLUSH WITH VENEER
(SELFLOK, WEATHERGROOVE, ECOWALL, RUBIX RANGES)

SCALE:

NTS

DRAWN BY:

A.MOATE

CHECKED BY:

R.STUART

DATE:

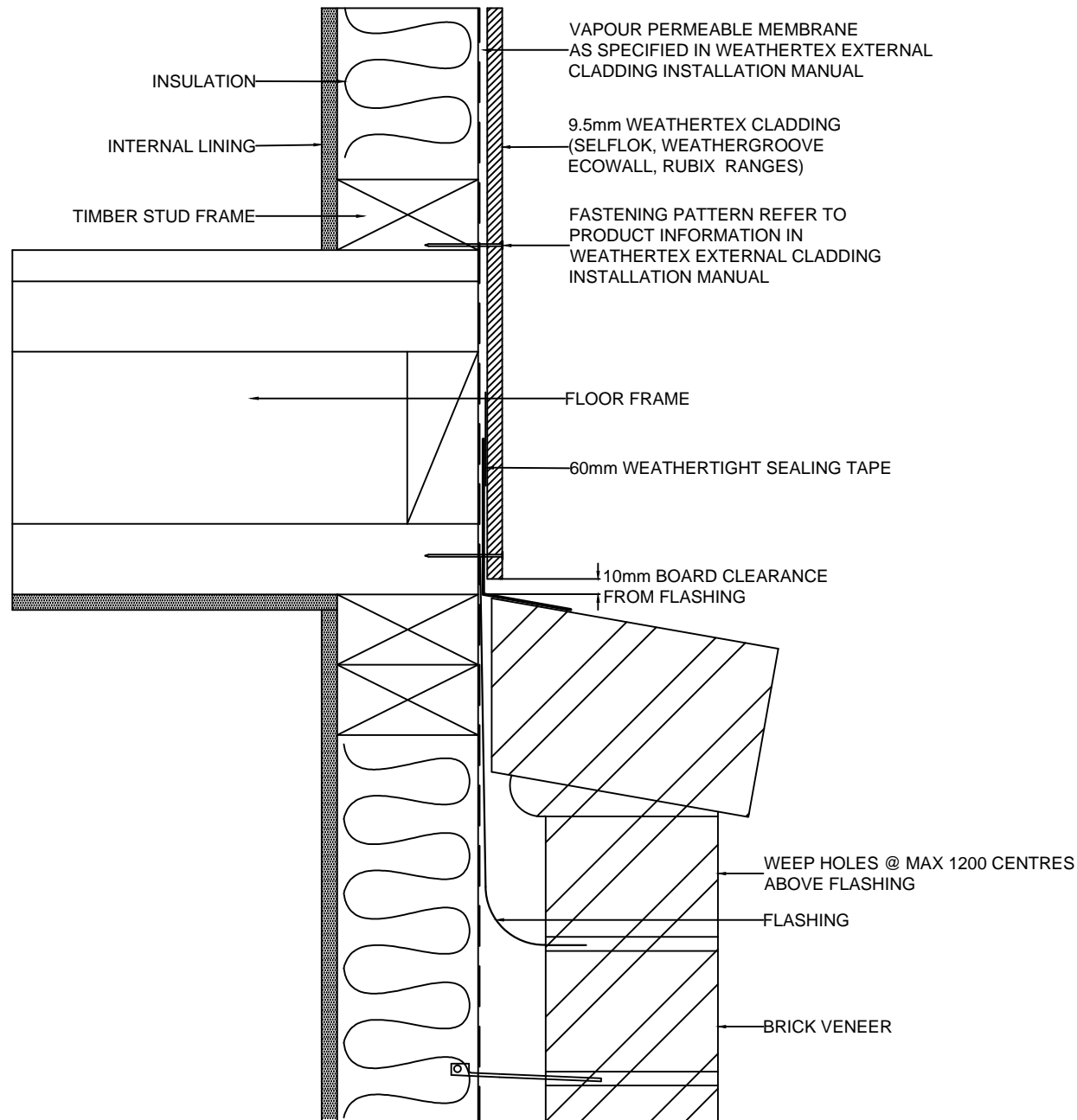
09.07.20

DRAWING No.:

CD-DF-26

SHT SIZE

A4



These drawings are for information only. They do not contain full details required for construction and must be used in conjunction with the current issue WeatherTex Installation Manual, National Construction Code and any other State and Local Regulations. WeatherTex recommends gaining professional advice to ensure the drawings are suitable for your project. WeatherTex accepts no liability in respect to the use of these drawings.



DRAWING NAME:
 DIRECT FIX INSTALLATION - SET BACK OVER BRICK VENEER
 (SELFLOK, WEATHERGROOVE, ECOWALL, RUBIX RANGES)

SCALE:
 NTS

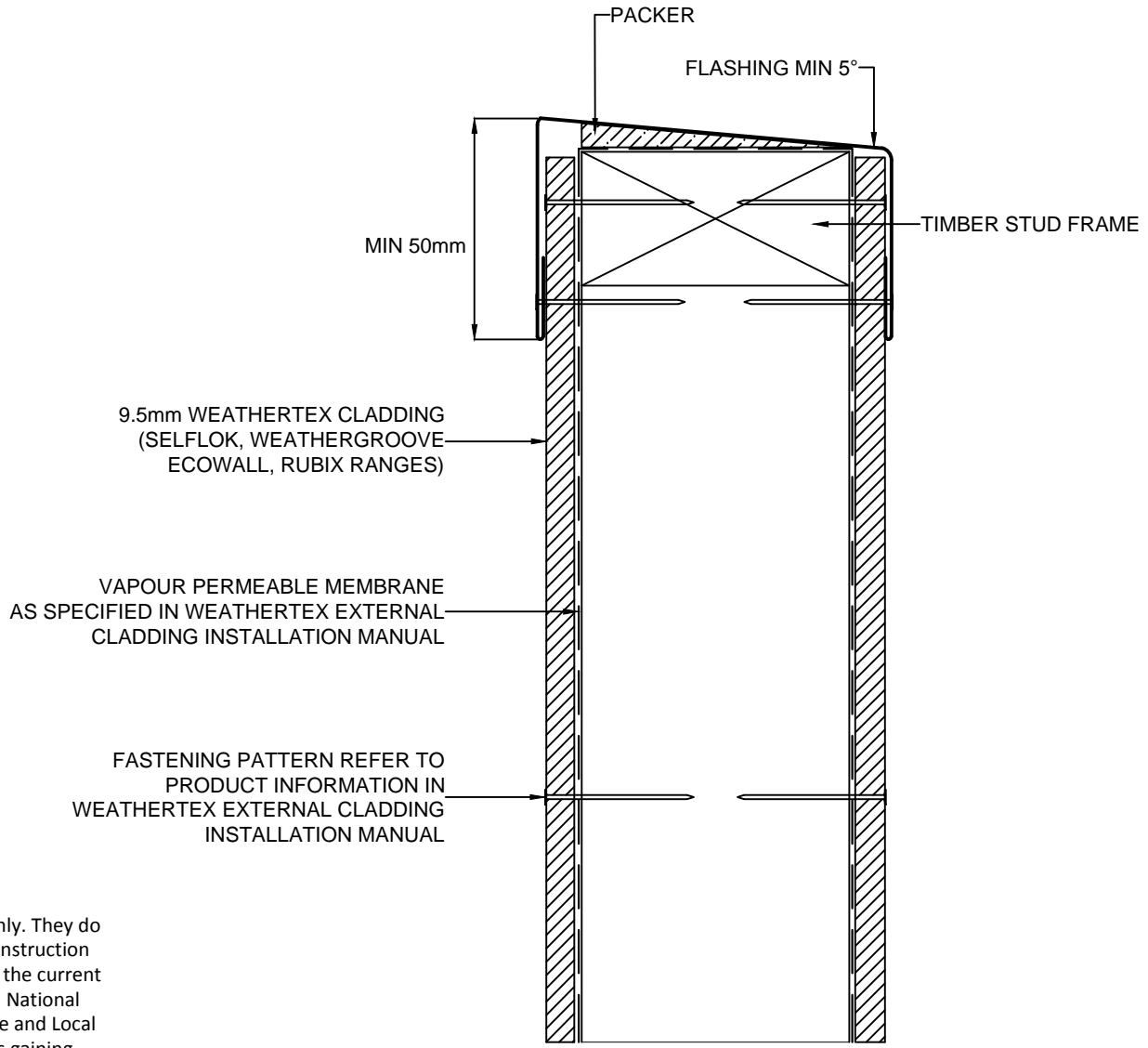
DRAWN BY:
 A.MOATE

CHECKED BY:
 R.STUART


DATE:
 09.07.20

DRAWING No.:
 CD-DF-28

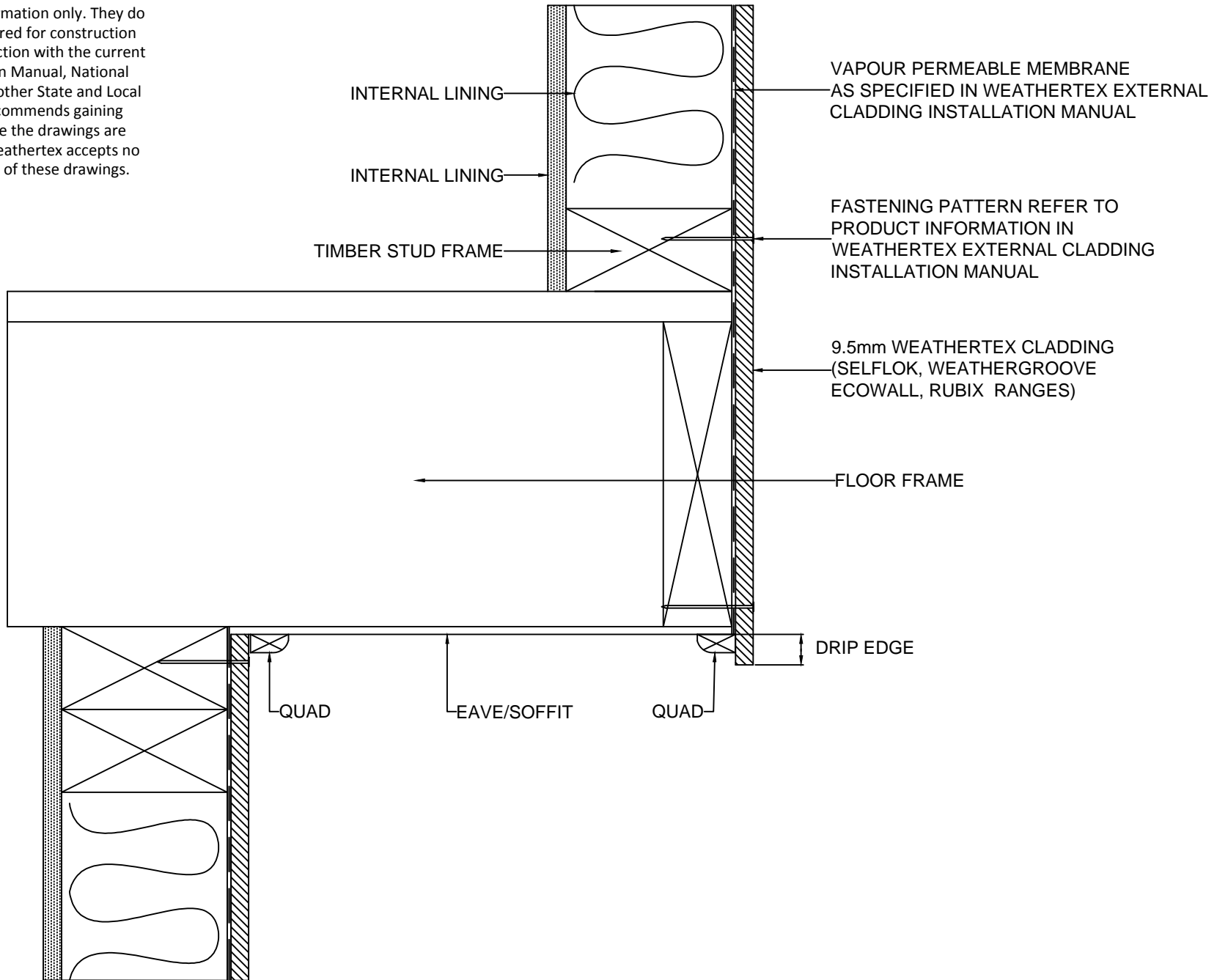
SHT SIZE
 A4



These drawings are for information only. They do not contain full details required for construction and must be used in conjunction with the current issue Weatherex Installation Manual, National Construction Code and any other State and Local Regulations. Weatherex recommends gaining professional advice to ensure the drawings are suitable for your project. Weatherex accepts no liability in respect to the use of these drawings.

	DRAWING NAME:	SCALE:	DRAWN BY:	CHECKED BY:	DATE:	DRAWING No.:	SHT SIZE
	DIRECT FIX INSTALLATION - PARAPET OR BALUSTRADE (SELFLOK, WEATHERGROOVE, ECOWALL, RUBIX RANGES)	NTS	A.MOATE	R.STUART	09.07.20	CD-DF-30	A4

These drawings are for information only. They do not contain full details required for construction and must be used in conjunction with the current issue Weathertex Installation Manual, National Construction Code and any other State and Local Regulations. Weathertex recommends gaining professional advice to ensure the drawings are suitable for your project. Weathertex accepts no liability in respect to the use of these drawings.



DRAWING NAME:
DIRECT FIX INSTALLATION - CANTILEVER ROOF
(SELFLOK, WEATHERGROOVE, ECOWALL, RUBIX RANGES)

SCALE:
NTS

DRAWN BY:
A.MOATE

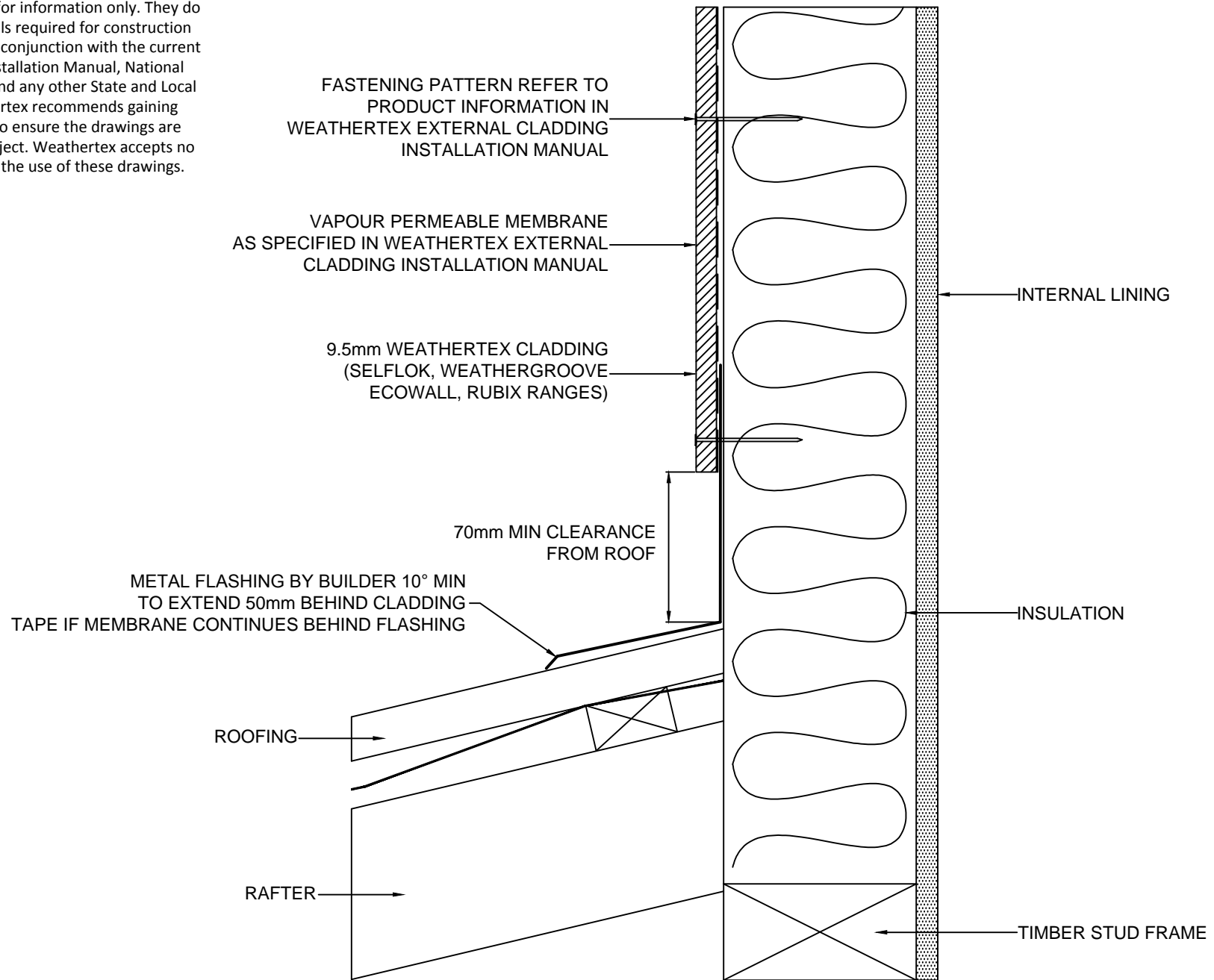
CHECKED BY:
R.STUART

DATE:
10.07.20

DRAWING No.:
CD-DF-32

SHT SIZE
A4

These drawings are for information only. They do not contain full details required for construction and must be used in conjunction with the current issue Weathertex Installation Manual, National Construction Code and any other State and Local Regulations. Weathertex recommends gaining professional advice to ensure the drawings are suitable for your project. Weathertex accepts no liability in respect to the use of these drawings.



DRAWING NAME:
DIRECT FIX INSTALLATION - ROOF CLEARANCE
(SELFLOK, WEATHERGROOVE, ECOWALL, RUBIX RANGES)

SCALE:
NTS

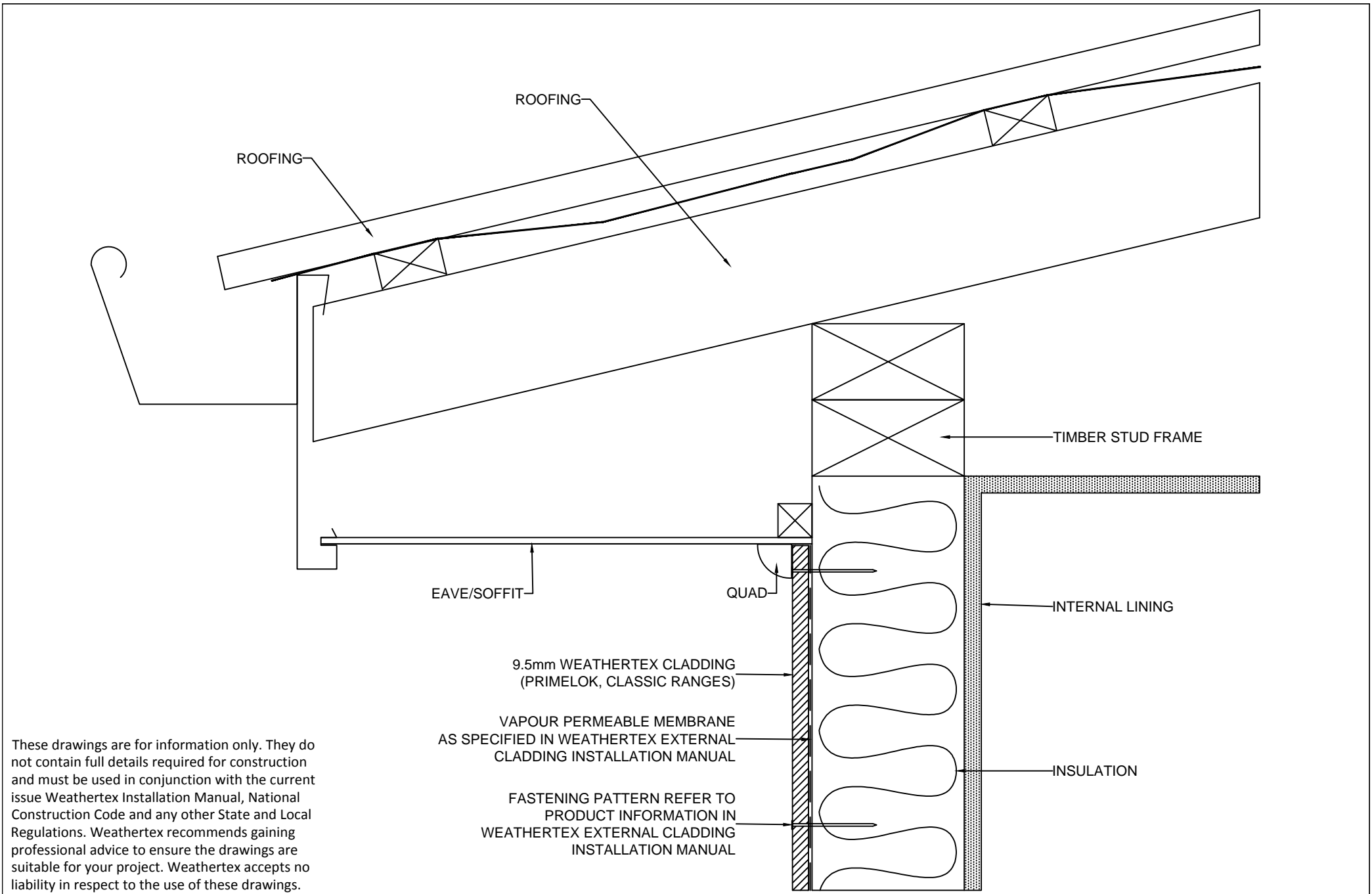
DRAWN BY:
A.MOATE

CHECKED BY:
R.STUART


DATE:
10.07.20

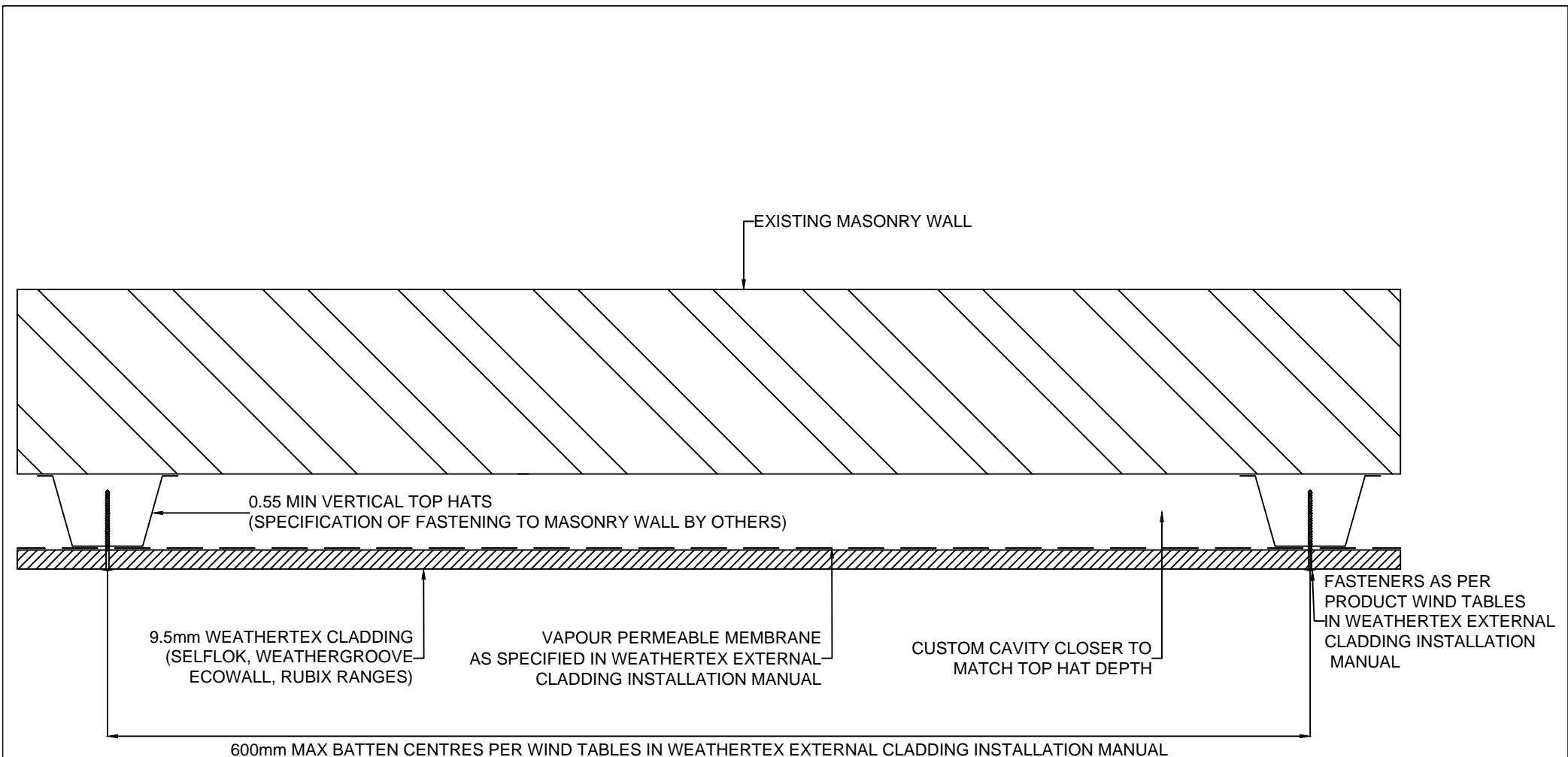
DRAWING No.:
CD-DF-34

SHT SIZE
A4




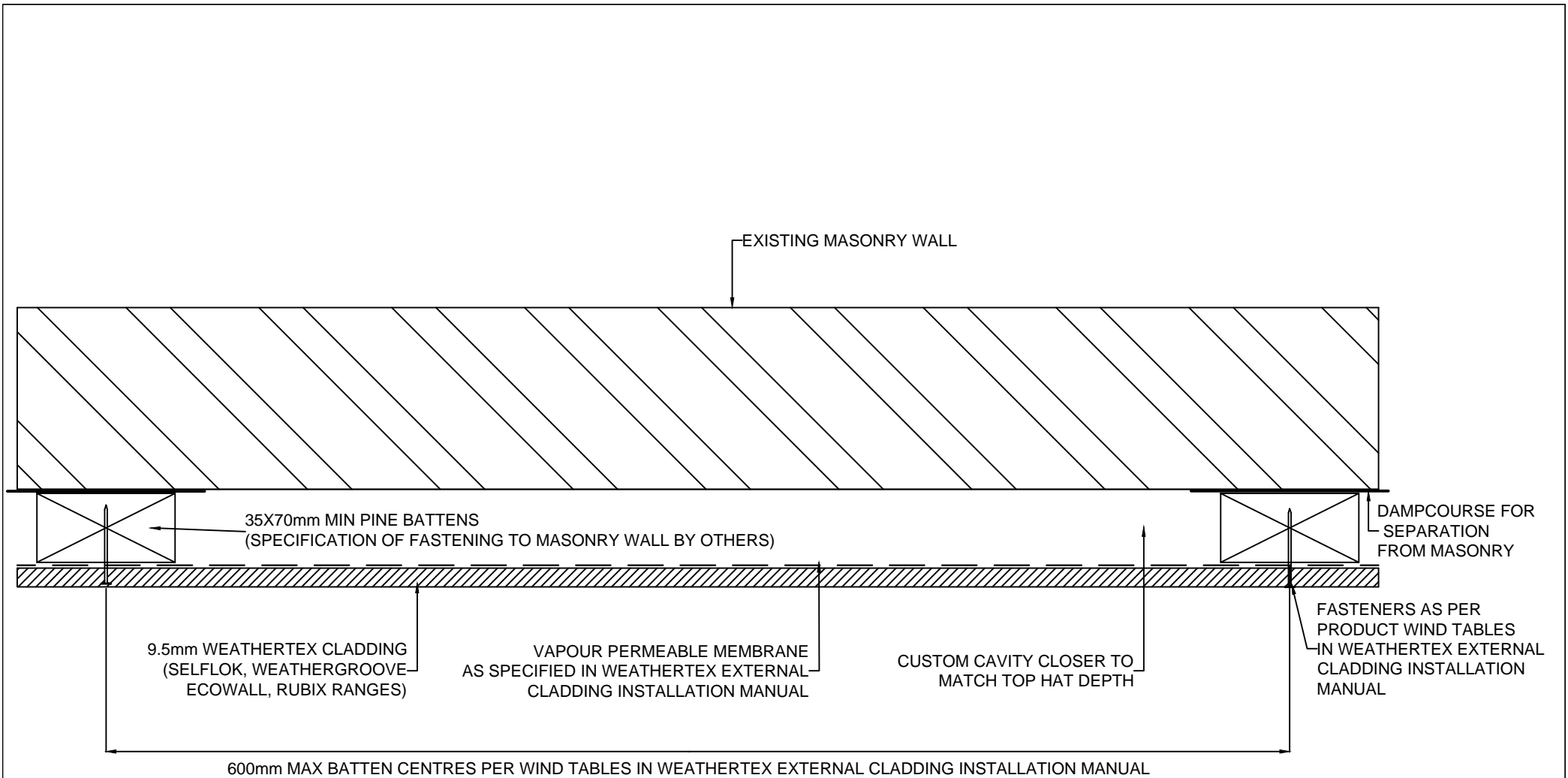
These drawings are for information only. They do not contain full details required for construction and must be used in conjunction with the current issue Weathertex Installation Manual, National Construction Code and any other State and Local Regulations. Weathertex recommends gaining professional advice to ensure the drawings are suitable for your project. Weathertex accepts no liability in respect to the use of these drawings.

	DRAWING NAME: DIRECT FIX INSTALLATION - EAVE/SOFFIT (SELFLOK, WEATHERGROOVE, ECOWALL, RUBIX RANGES)	SCALE: NTS	DRAWN BY: A.MOATE	CHECKED BY: R.STUART	DATE: 10.07.20	DRAWING No.: CD-DF-36	SHT SIZE A4




These drawings are for information only. They do not contain full details required for construction and must be used in conjunction with the current issue Weatherdex Installation Manual, National Construction Code and any other State and Local Regulations. Weatherdex recommends gaining professional advice to ensure the drawings are suitable for your project. Weatherdex accepts no liability in respect to the use of these drawings.

	DRAWING NAME: DIRECT FIX INSTALLATION - CLADDING OVER MASONRY (TOP HATS) (SELFLOK, WEATHERGROOVE, ECOWALL, RUBIX RANGES)	SCALE: NTS	DRAWN BY: A.MOATE	CHECKED BY: R.STUART	DATE: 10.07.20	DRAWING No.: CD-DF-38	SHT SIZE A4



These drawings are for information only. They do not contain full details required for construction and must be used in conjunction with the current issue Weatherdex Installation Manual, National Construction Code and any other State and Local Regulations. Weatherdex recommends gaining professional advice to ensure the drawings are suitable for your project. Weatherdex accepts no liability in respect to the use of these drawings.

	DRAWING NAME: DIRECT FIX INSTALLATION - CLADDING OVER MASONRY (BATTENS) (SELF FLOK, WEATHERGROOVE, ECOWALL, RUBIX RANGES)	SCALE: NTS	DRAWN BY: A.MOATE	CHECKED BY: R.STUART	DATE: 10.07.20	DRAWING No.: CD-DF-40	SHT SIZE A4