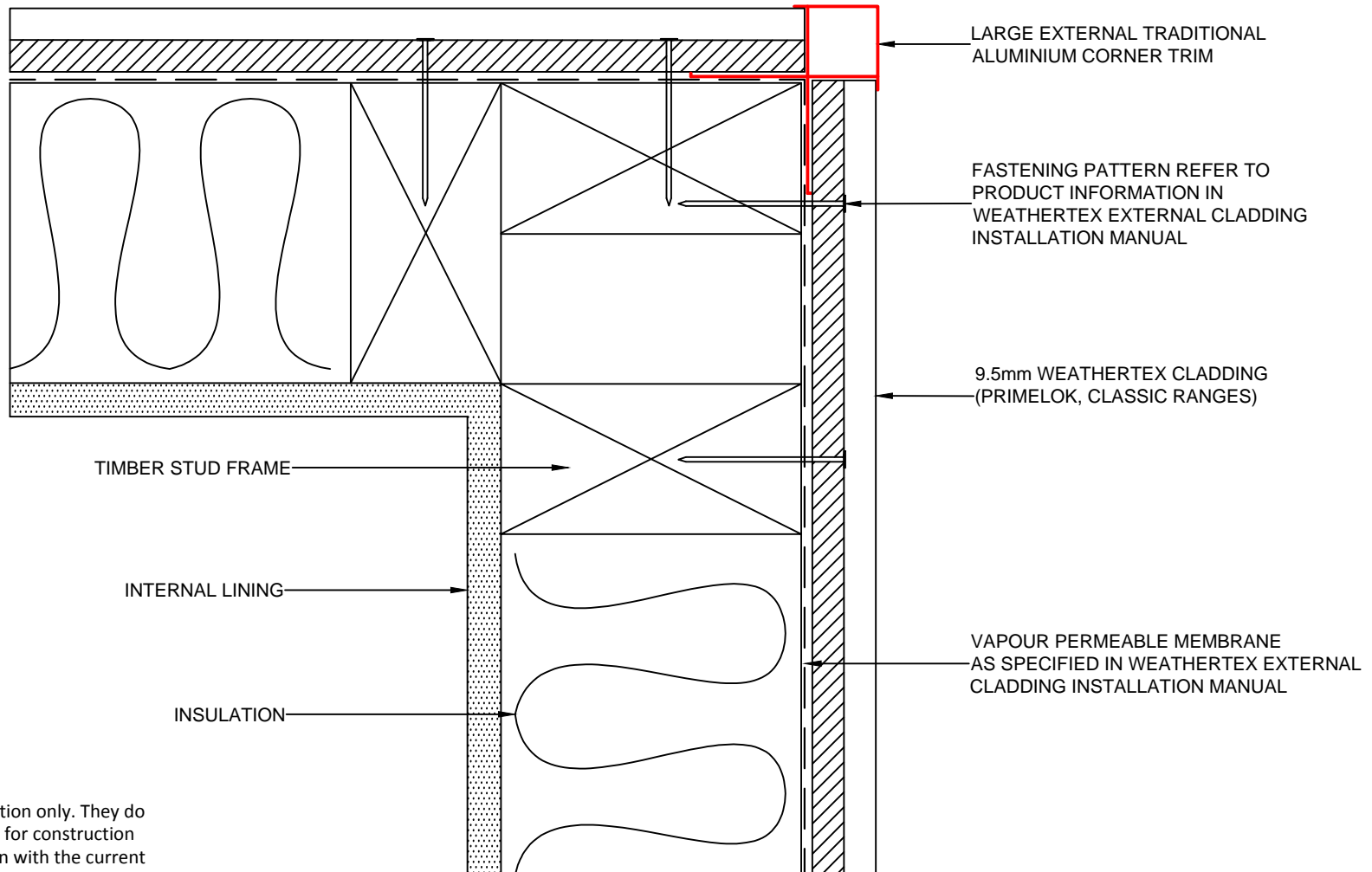


**WEATHERTEX
CONSTRUCTION
DETAILS**

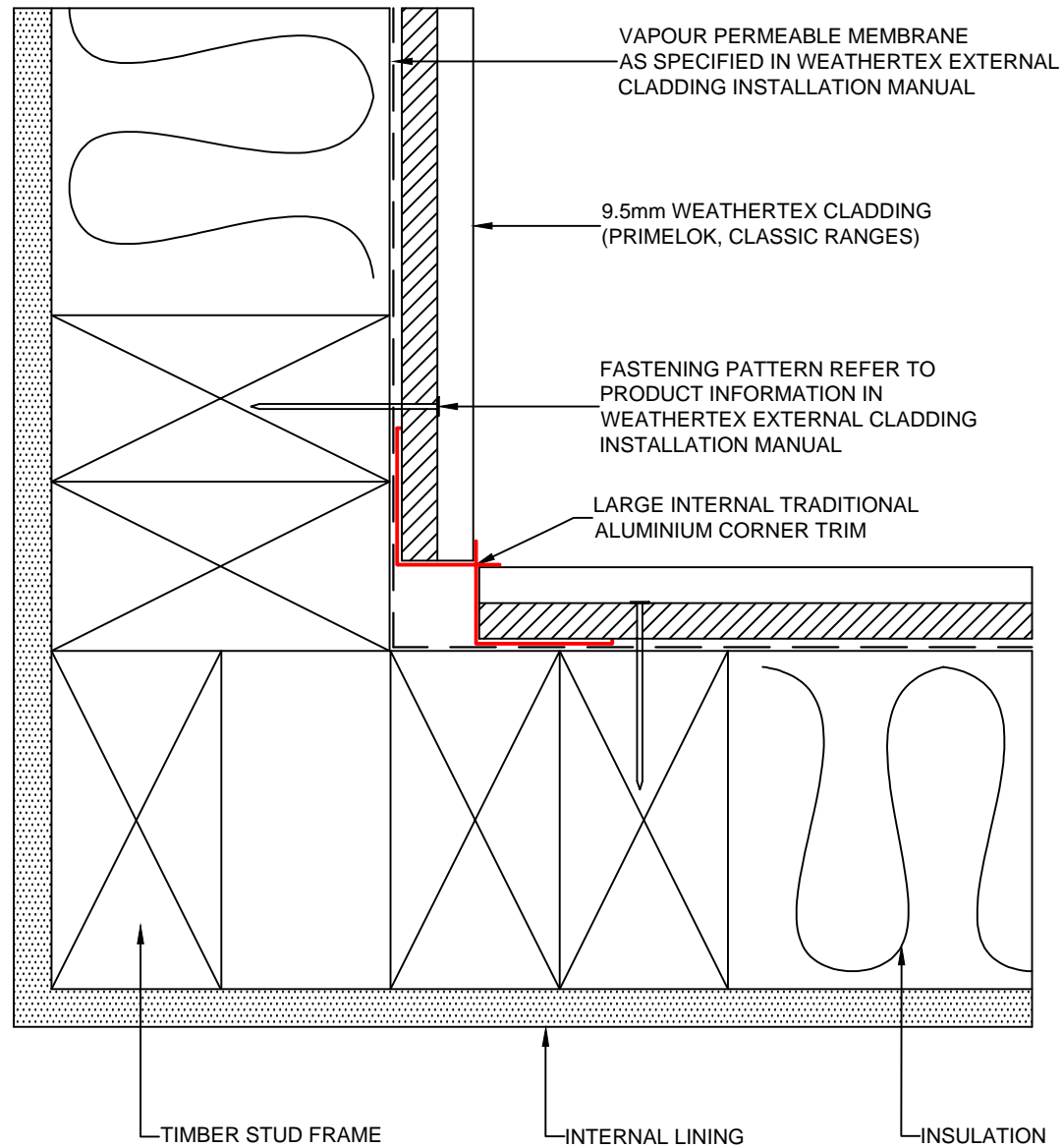
CLASSIC WEATHERBOARDS

DIRECT FIX
CONSTRUCTION



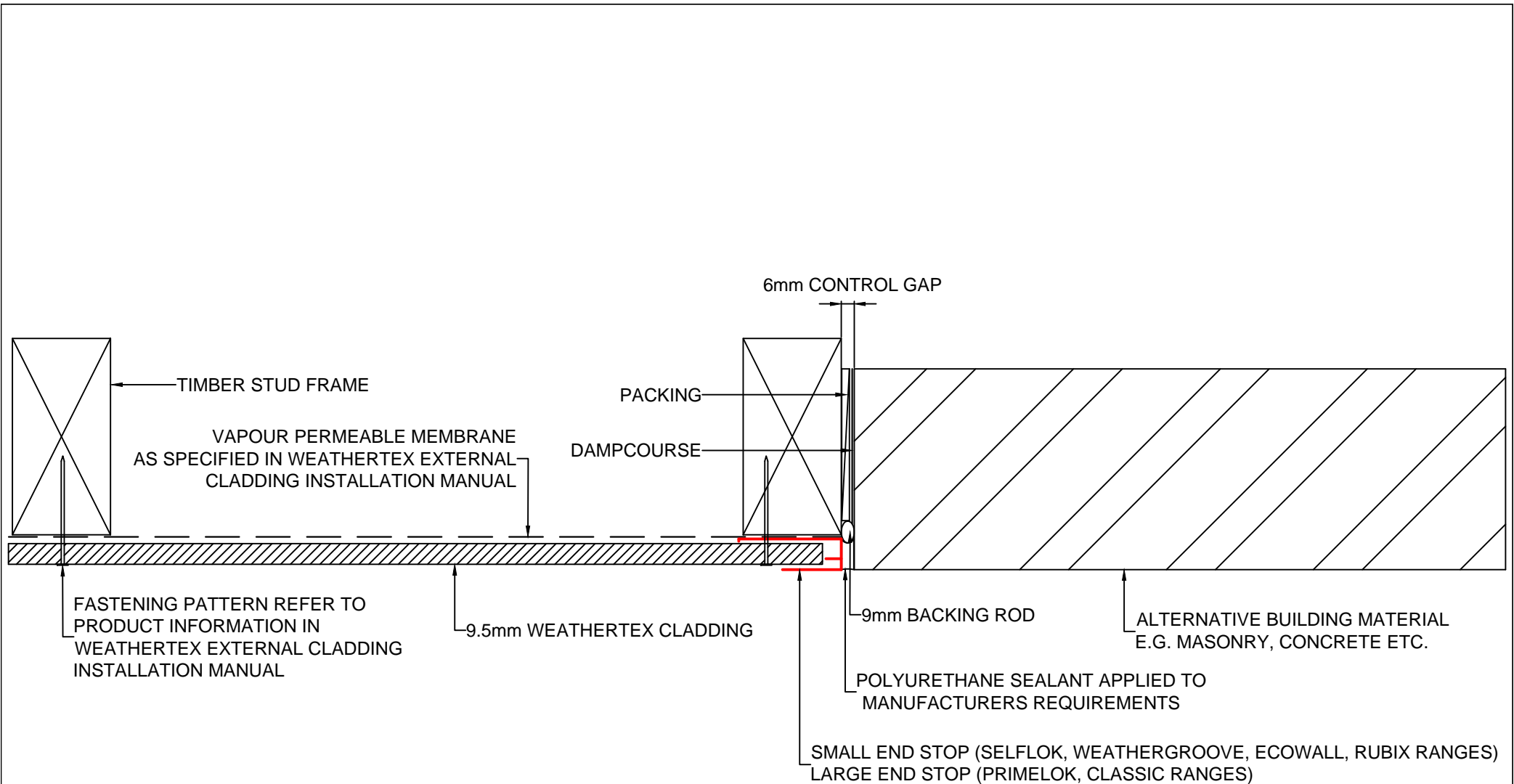
These drawings are for information only. They do not contain full details required for construction and must be used in conjunction with the current issue Weathertex Installation Manual, National Construction Code and any other State and Local Regulations. Weathertex recommends gaining professional advice to ensure the drawings are suitable for your project. Weathertex accepts no liability in respect to the use of these drawings.

	DRAWING NAME: DIRECT FIX INSTALLATION - LARGE EXTERNAL TRADITIONAL CORNER (PRIMELOK, CLASSIC RANGES)	SCALE: NTS	DRAWN BY: A.MOATE	CHECKED BY: R.STUART	DATE: 07.07.20	DRAWING No.: CD-DF-5	SHT SIZE A4
--	--	---------------	----------------------	-------------------------	-------------------	-------------------------	----------------




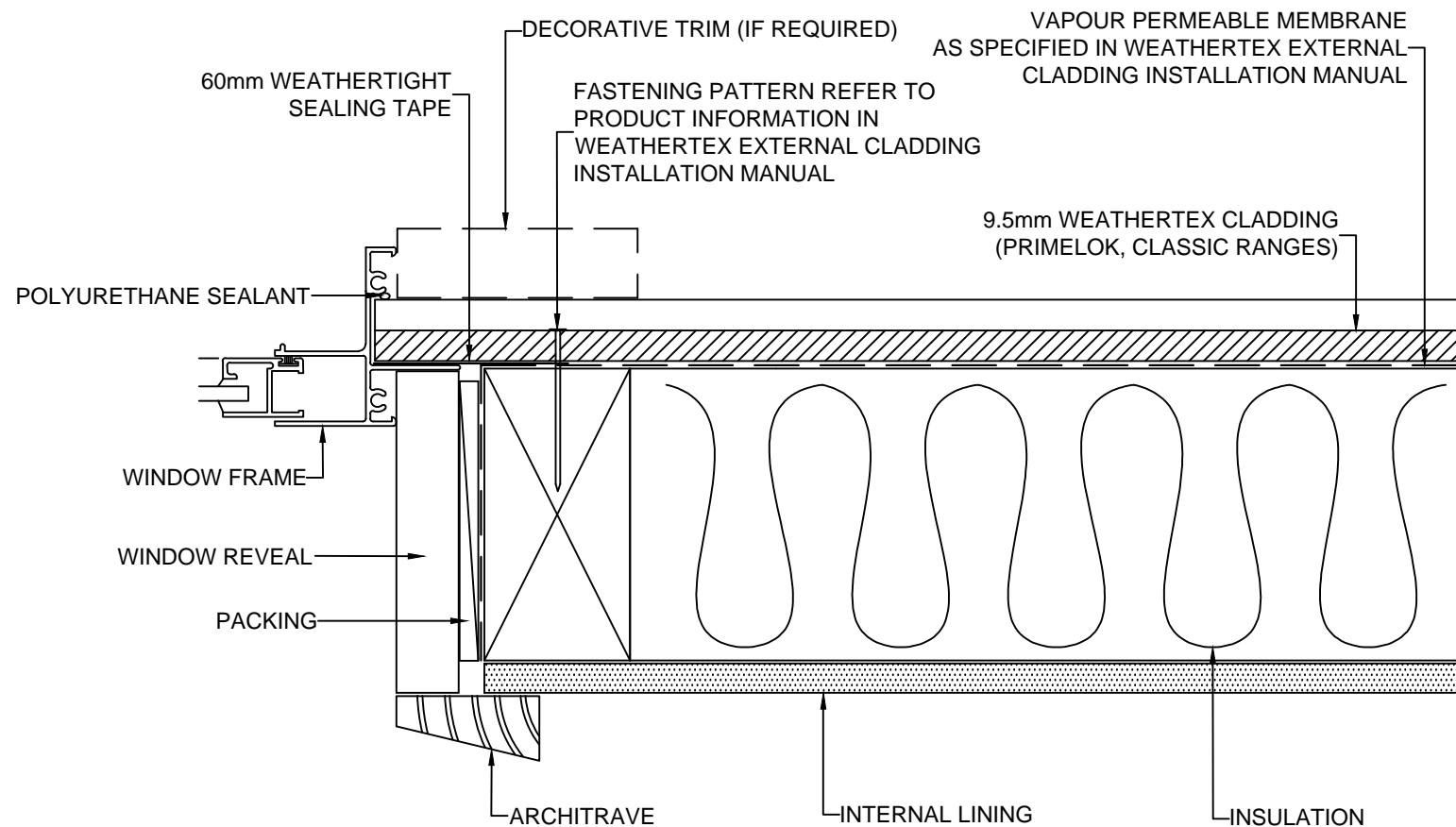
These drawings are for information only. They do not contain full details required for construction and must be used in conjunction with the current issue WeatherTex Installation Manual, National Construction Code and any other State and Local Regulations. WeatherTex recommends gaining professional advice to ensure the drawings are suitable for your project. WeatherTex accepts no liability in respect to the use of these drawings.

	DRAWING NAME: DIRECT FIX INSTALLATION - LARGE INTERNAL TRADITIONAL CORNER (PRIMELOK, CLASSIC RANGES)	SCALE: NTS	DRAWN BY: A.MOATE	CHECKED BY: R.STUART	DATE: 07.07.20	DRAWING No.: CD-DF-6	SHT SIZE A4
--	--	---------------	----------------------	-------------------------	-------------------	-------------------------	----------------



These drawings are for information only. They do not contain full details required for construction and must be used in conjunction with the current issue Weatherdex Installation Manual, National Construction Code and any other State and Local Regulations. Weatherdex recommends gaining professional advice to ensure the drawings are suitable for your project. Weatherdex accepts no liability in respect to the use of these drawings.

	DRAWING NAME: DIRECT FIX INSTALLATION - END STOP SEPARATION FROM ALTERNATIVE BUILDING MATERIALS (ALL RANGES)	SCALE: NTS	DRAWN BY: A.MOATE	CHECKED BY: R.STUART	DATE: 07.07.20	DRAWING No.: CD-DF-7	SHT SIZE A4

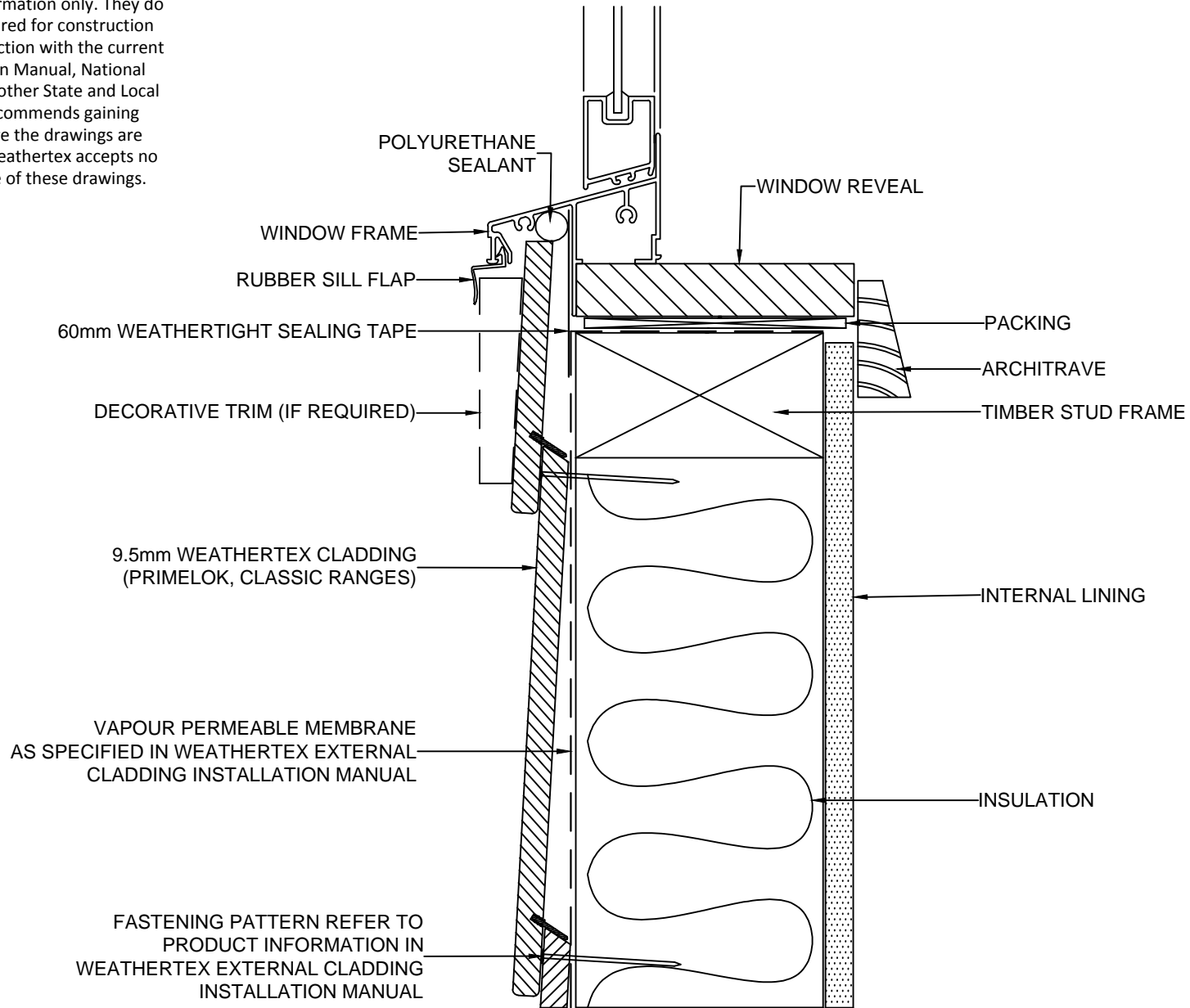


These drawings are for information only. They do not contain full details required for construction and must be used in conjunction with the current issue Weathertex Installation Manual, National Construction Code and any other State and Local Regulations. Weathertex recommends gaining professional advice to ensure the drawings are suitable for your project. Weathertex accepts no liability in respect to the use of these drawings.


WINDOW MEMBRANE TRIM DETAIL TO BE INSTALLED TO AS4200.2:2017 Fig 4.7

	DRAWING NAME:	SCALE:	DRAWN BY:	CHECKED BY:	DATE:	DRAWING No.:	SHT SIZE
	DIRECT FIX INSTALLATION - WINDOW FRAME JAMB (PRIMELOK, CLASSIC RANGES)	NTS	A.MOATE	R.STUART	07.07.20	CD-DF-11	A4

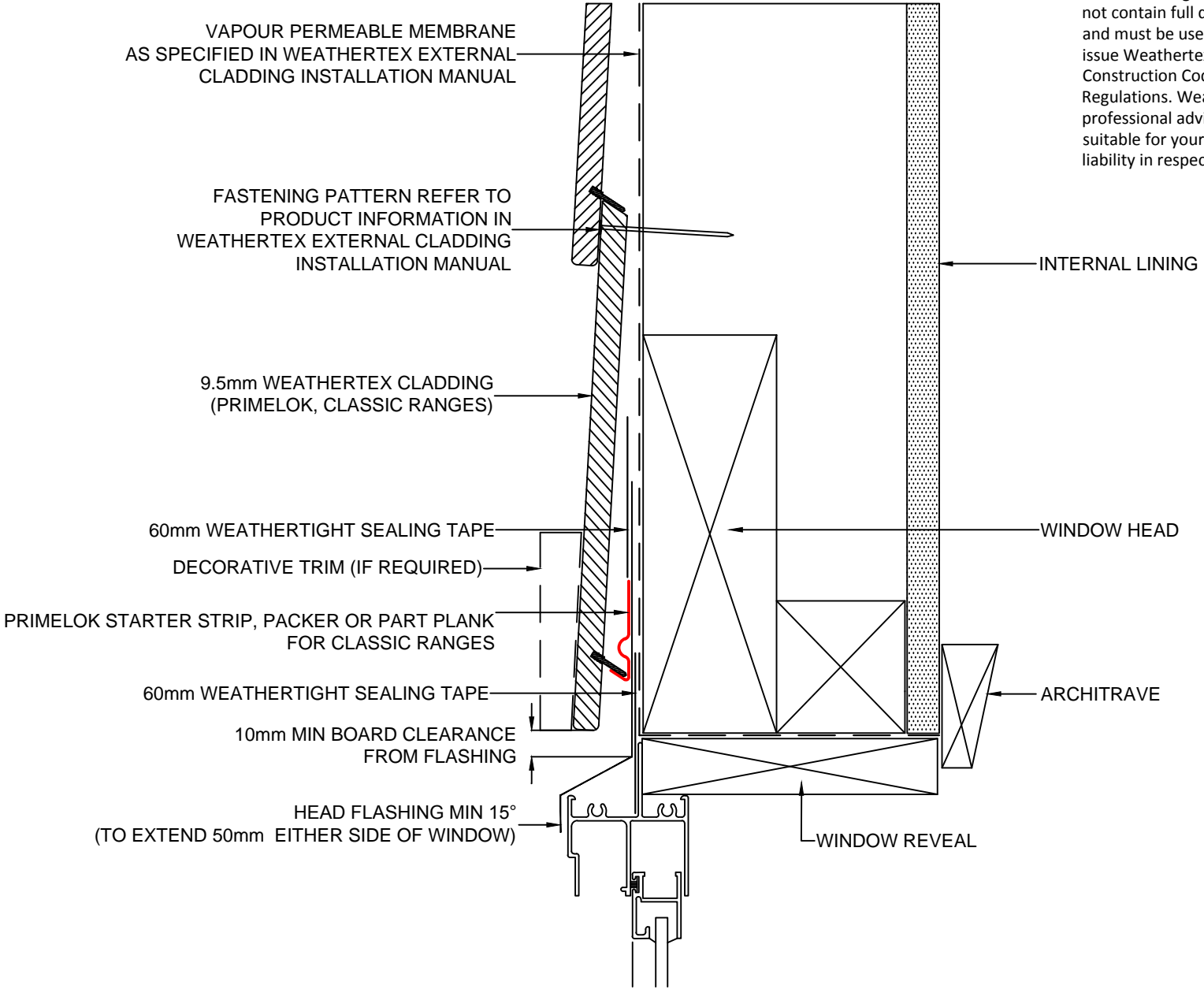
These drawings are for information only. They do not contain full details required for construction and must be used in conjunction with the current issue Weathertex Installation Manual, National Construction Code and any other State and Local Regulations. Weathertex recommends gaining professional advice to ensure the drawings are suitable for your project. Weathertex accepts no liability in respect to the use of these drawings.



WINDOW MEMBRANE TRIM DETAIL TO BE INSTALLED TO AS4200.2:2017 Fig 4.7

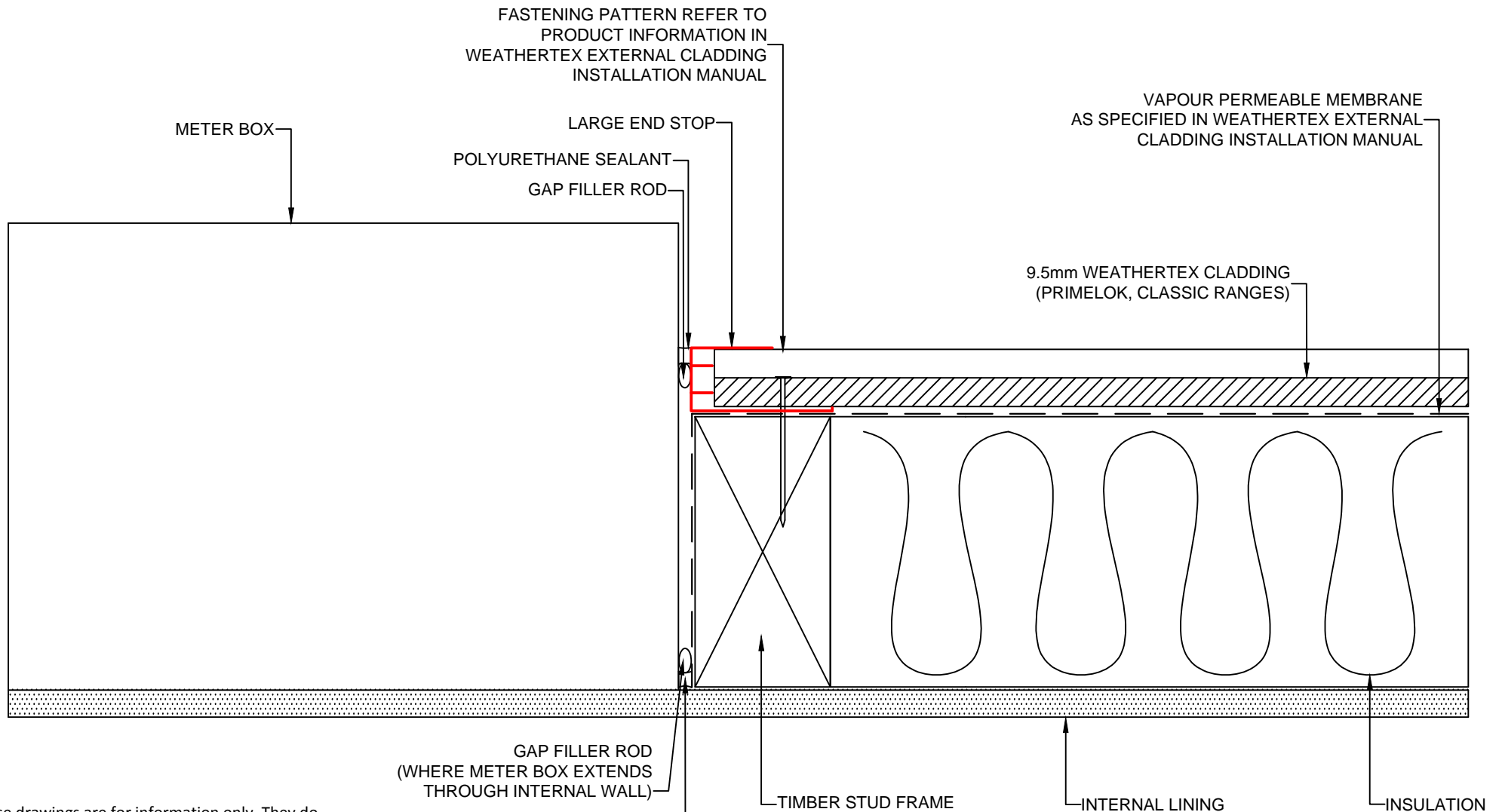
	DRAWING NAME: DIRECT FIX INSTALLATION - WINDOW FRAME SILL (PRIMELOK, CLASSIC RANGES)	SCALE: NTS	DRAWN BY: A.MOATE	CHECKED BY: R.STUART	DATE: 07.07.20	DRAWING No.: CD-DF-12	SHT SIZE A4

These drawings are for information only. They do not contain full details required for construction and must be used in conjunction with the current issue Weathertex Installation Manual, National Construction Code and any other State and Local Regulations. Weathertex recommends gaining professional advice to ensure the drawings are suitable for your project. Weathertex accepts no liability in respect to the use of these drawings.



WINDOW MEMBRANE TRIM DETAIL TO BE INSTALLED TO AS4200.2:2017 Fig 4.7

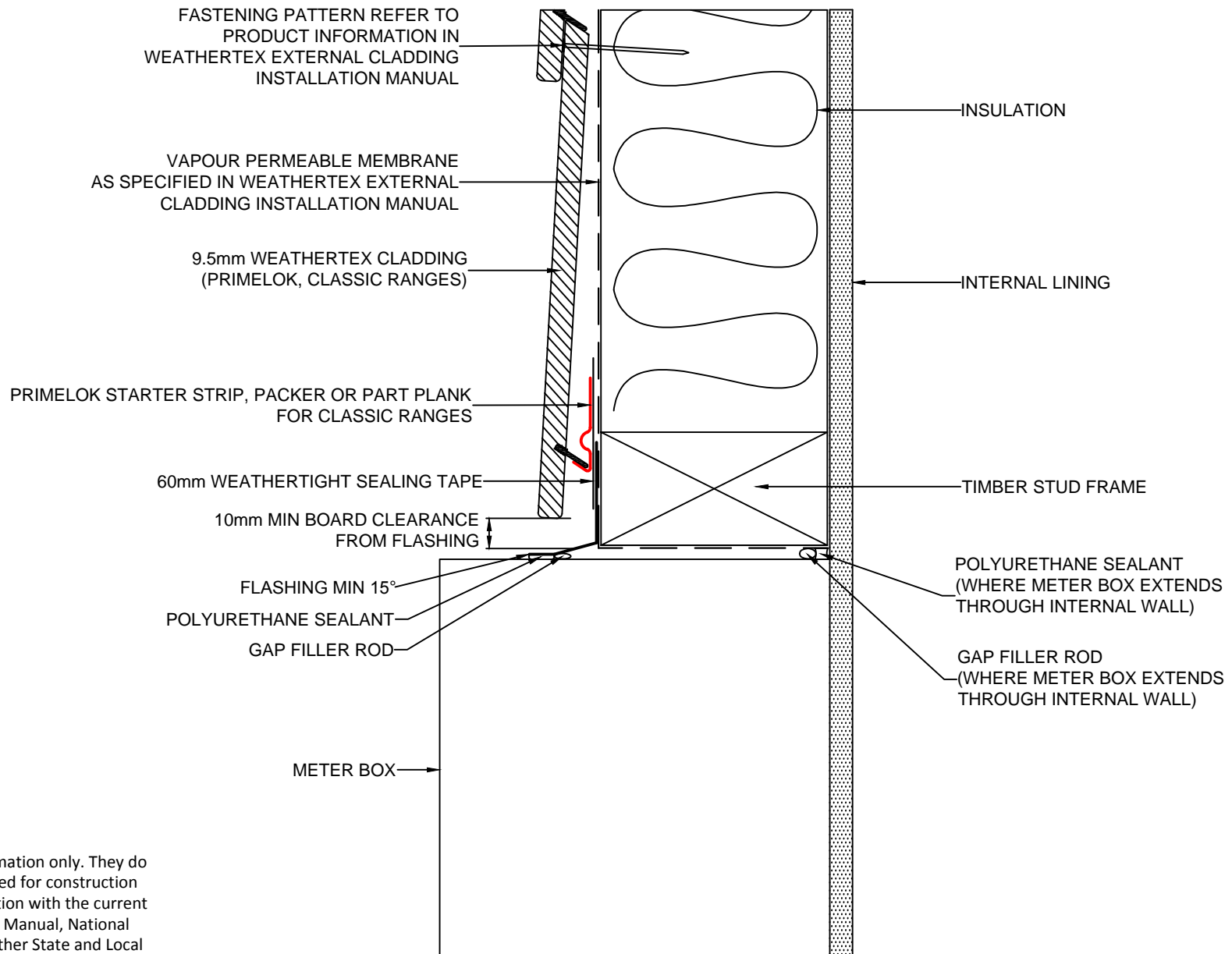
	DRAWING NAME: DIRECT FIX INSTALLATION - WINDOW FRAME HEAD (PRIMELOK, CLASSIC RANGES)	SCALE:	DRAWN BY:	CHECKED BY:	DATE:	DRAWING No.:	SHT SIZE
		NTS	A.MOATE	R.STUART	07.07.20	CD-DF-13	A4



These drawings are for information only. They do not contain full details required for construction and must be used in conjunction with the current issue WeatherTex Installation Manual, National Construction Code and any other State and Local Regulations. WeatherTex recommends gaining professional advice to ensure the drawings are suitable for your project. WeatherTex accepts no liability in respect to the use of these drawings.

METER BOX TRIM DETAIL TO BE INSTALLED TO AS4200.2:2017 Fig 4.7

	DRAWING NAME: DIRECT FIX INSTALLATION - METER BOX JAMB (PRIMLOK, CLASSIC RANGES)	SCALE: NTS	DRAWN BY: A.MOATE	CHECKED BY: R.STUART	DATE: 07.07.20	DRAWING No.: CD-DF-17	SHT SIZE A4

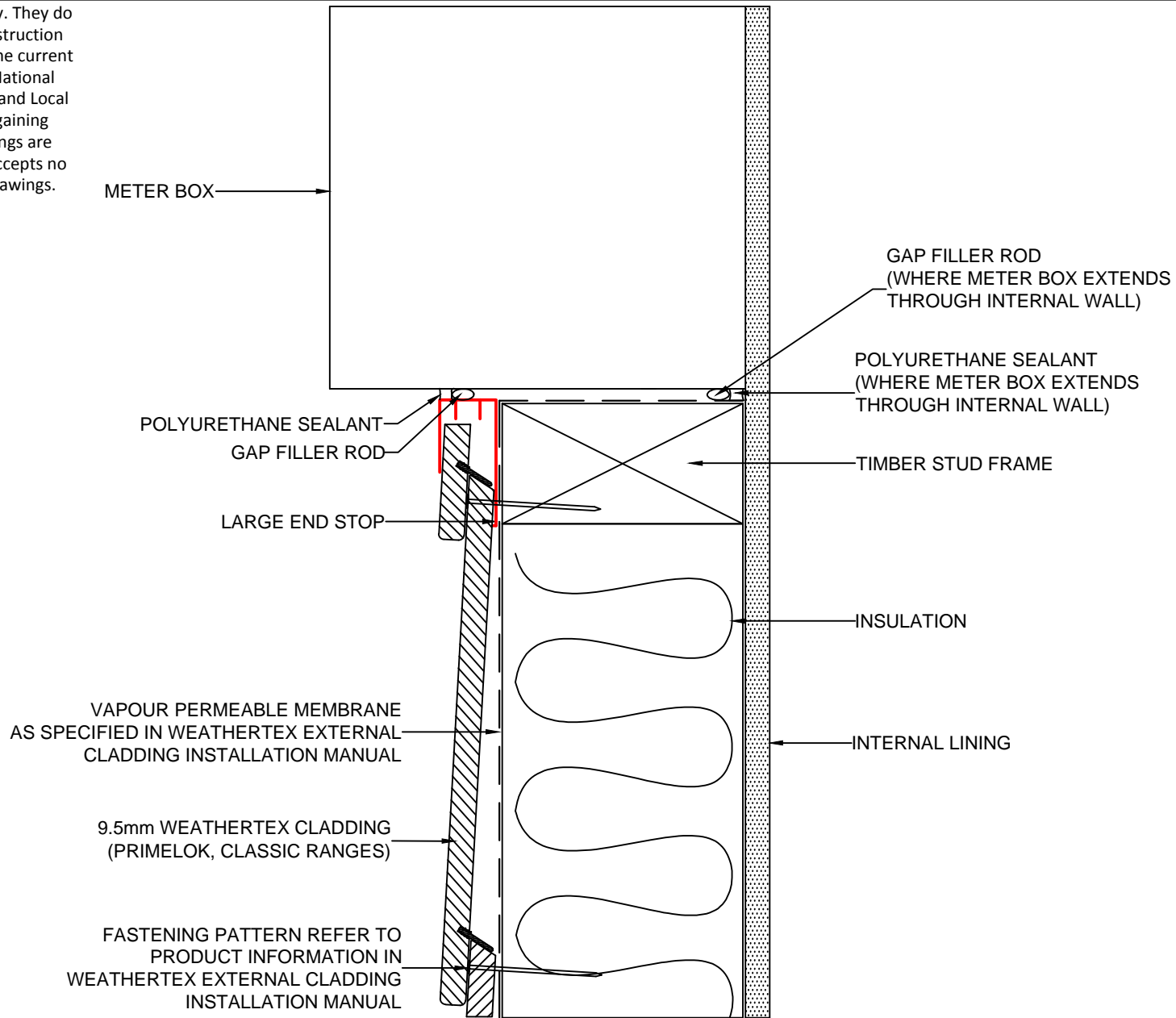


These drawings are for information only. They do not contain full details required for construction and must be used in conjunction with the current issue Weathertex Installation Manual, National Construction Code and any other State and Local Regulations. Weathertex recommends gaining professional advice to ensure the drawings are suitable for your project. Weathertex accepts no liability in respect to the use of these drawings.


METER BOX MEMBRANE TRIM DETAIL TO BE INSTALLED TO AS4200.2:2017 Fig 4.7

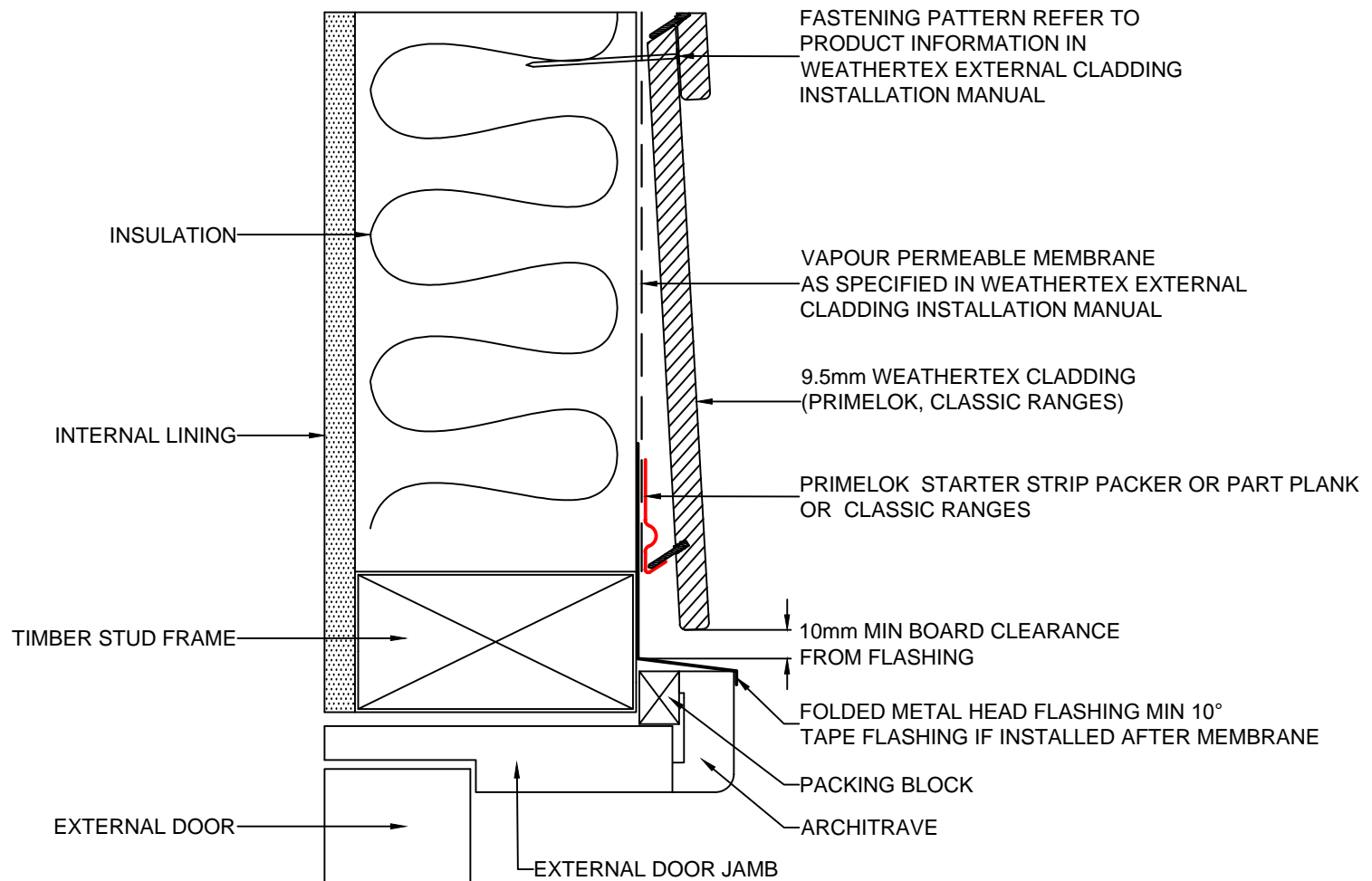
	DRAWING NAME: DIRECT FIX INSTALLATION - METER BOX HEAD (PRIMELOK, CLASSIC RANGES)	SCALE: NTS	DRAWN BY: A.MOATE	CHECKED BY: R.STUART	DATE: 08.07.20	DRAWING No.: CD-DF-18	SHT SIZE A4

These drawings are for information only. They do not contain full details required for construction and must be used in conjunction with the current issue Weathertex Installation Manual, National Construction Code and any other State and Local Regulations. Weathertex recommends gaining professional advice to ensure the drawings are suitable for your project. Weathertex accepts no liability in respect to the use of these drawings.



METER BOX MEMBRANE TRIM DETAIL TO BE INSTALLED TO AS4200.2:2017 Fig 4.7

	DRAWING NAME: DIRECT FIX INSTALLATION - METER BOX SILL (PRIMELOK, CLASSIC RANGES)	SCALE: NTS	DRAWN BY: A.MOATE	CHECKED BY: R.STUART	DATE: 08.07.20	DRAWING No.: CD-DF-19	SHT SIZE A4



These drawings are for information only. They do not contain full details required for construction and must be used in conjunction with the current issue Weathertex Installation Manual, National Construction Code and any other State and Local Regulations. Weathertex recommends gaining professional advice to ensure the drawings are suitable for your project. Weathertex accepts no liability in respect to the use of these drawings.



DRAWING NAME:
DIRECT FIX INSTALLATION - DOOR HEAD
(PRIMELOK, CLASSIC RANGES)

SCALE:

NTS

DRAWN BY:

A.MOATE

CHECKED BY:

R.STUART

DATE:

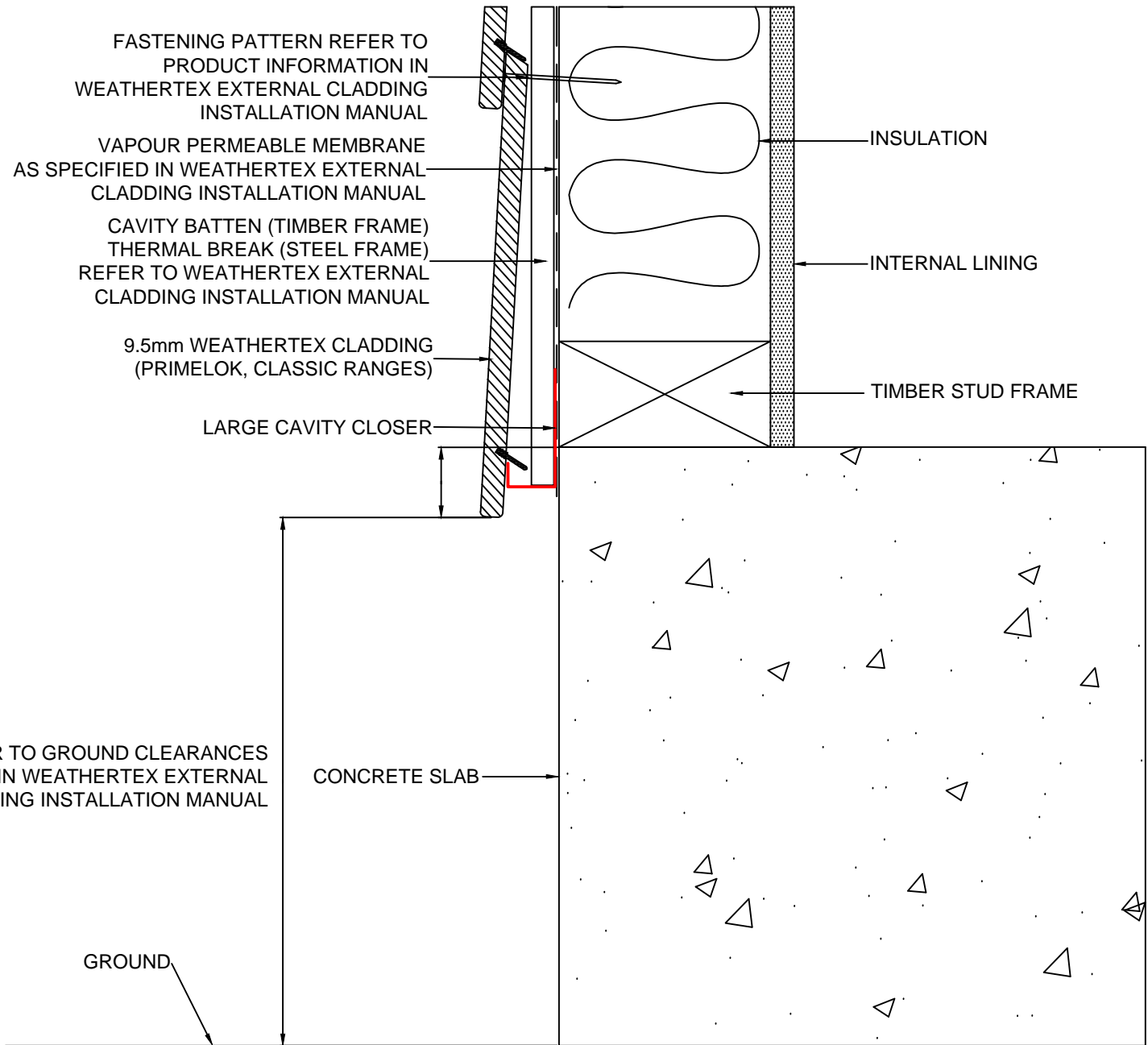
08.07.20

DRAWING No.:

CD-DF-21

SHT SIZE

A4



These drawings are for information only. They do not contain full details required for construction and must be used in conjunction with the current issue Weathertex Installation Manual, National Construction Code and any other State and Local Regulations. Weathertex recommends gaining professional advice to ensure the drawings are suitable for your project. Weathertex accepts no liability in respect to the use of these drawings.



DRAWING NAME:
CAVITY FIX INSTALLATION - CONCRETE SLAB GROUND CLEARANCE
(PRIMELOK, CLASSIC RANGES)

SCALE:
NTS

DRAWN BY:
A.MOATE

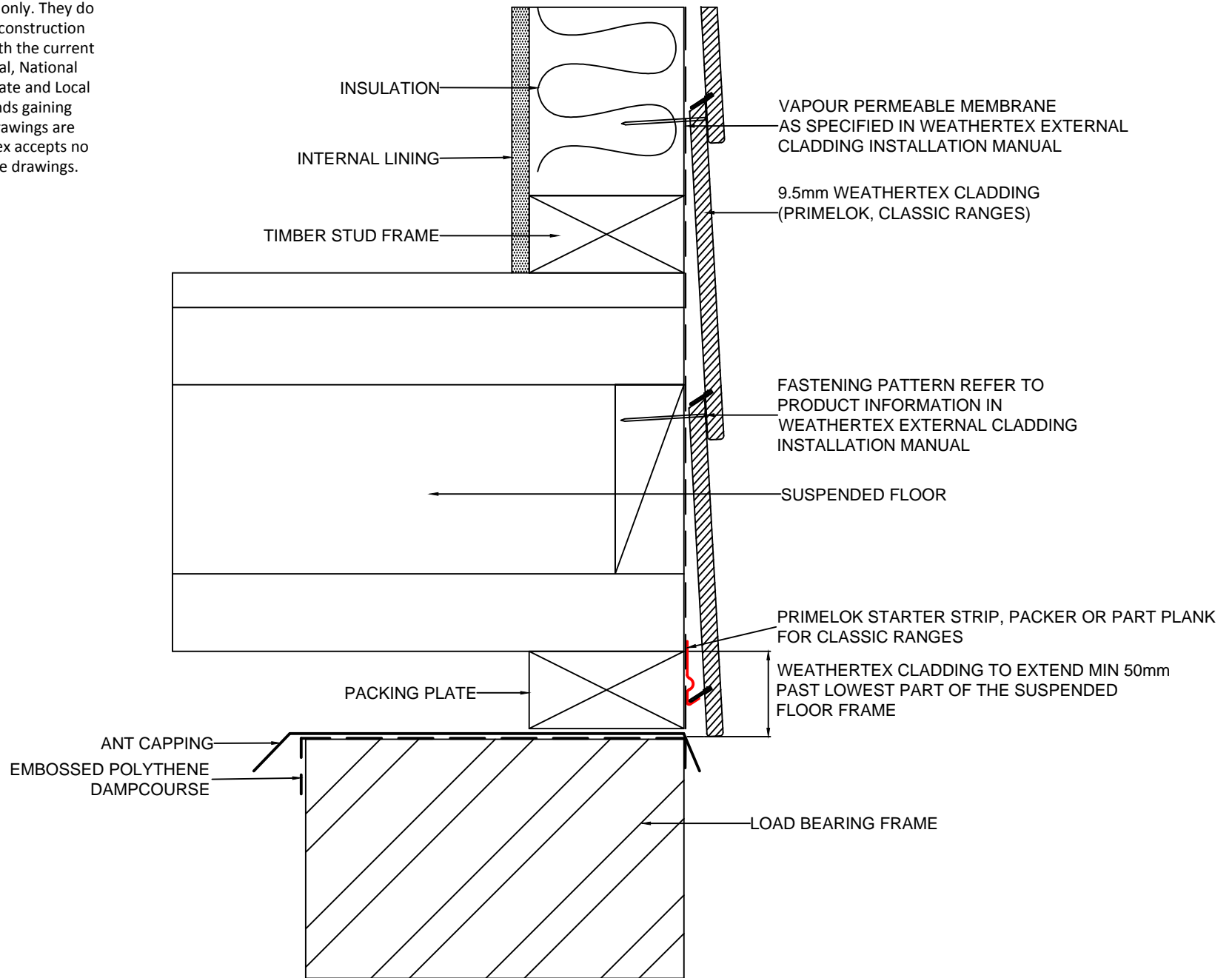
CHECKED BY:
R.STUART


DATE:
21.07.20

DRAWING No.:
CD-CF-23

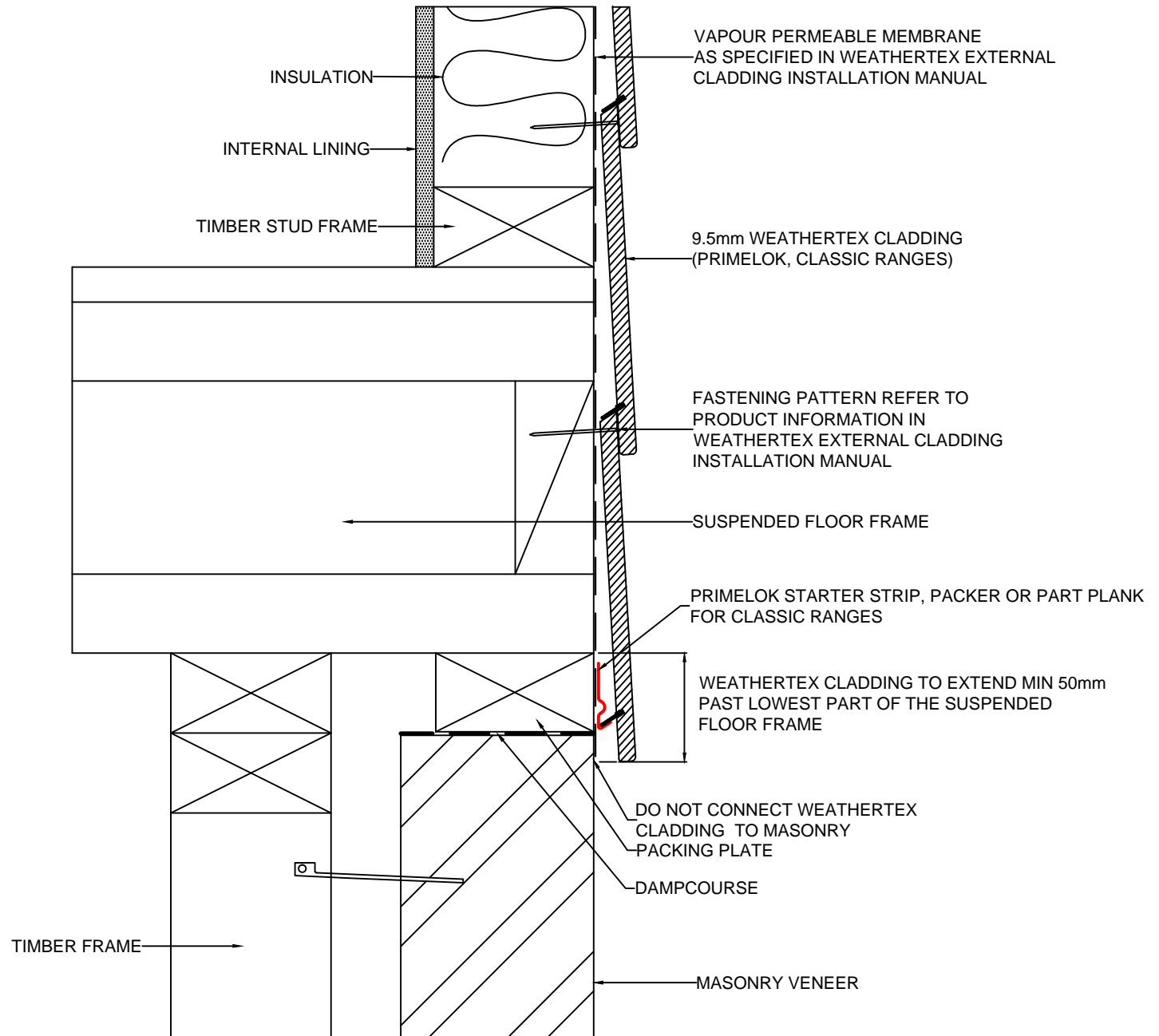
SHT SIZE
A4

These drawings are for information only. They do not contain full details required for construction and must be used in conjunction with the current issue Weathertex Installation Manual, National Construction Code and any other State and Local Regulations. Weathertex recommends gaining professional advice to ensure the drawings are suitable for your project. Weathertex accepts no liability in respect to the use of these drawings.



	DRAWING NAME: DIRECT FIX INSTALLATION - CLADDING OVER PIER (PRIMELOK, CLASSIC RANGES)	SCALE: NTS	DRAWN BY: A.MOATE	CHECKED BY: R.STUART	DATE: 09.07.20	DRAWING No.: CD-DF-25	SHT SIZE A4

These drawings are for information only. They do not contain full details required for construction and must be used in conjunction with the current issue Weathertex Installation Manual, National Construction Code and any other State and Local Regulations. Weathertex recommends gaining professional advice to ensure the drawings are suitable for your project. Weathertex accepts no liability in respect to the use of these drawings.



DRAWING NAME:
DIRECT FIX INSTALLATION - FLUSH WITH VENEER
(PRIMELOK, CLASSIC RANGES)

SCALE:
NTS

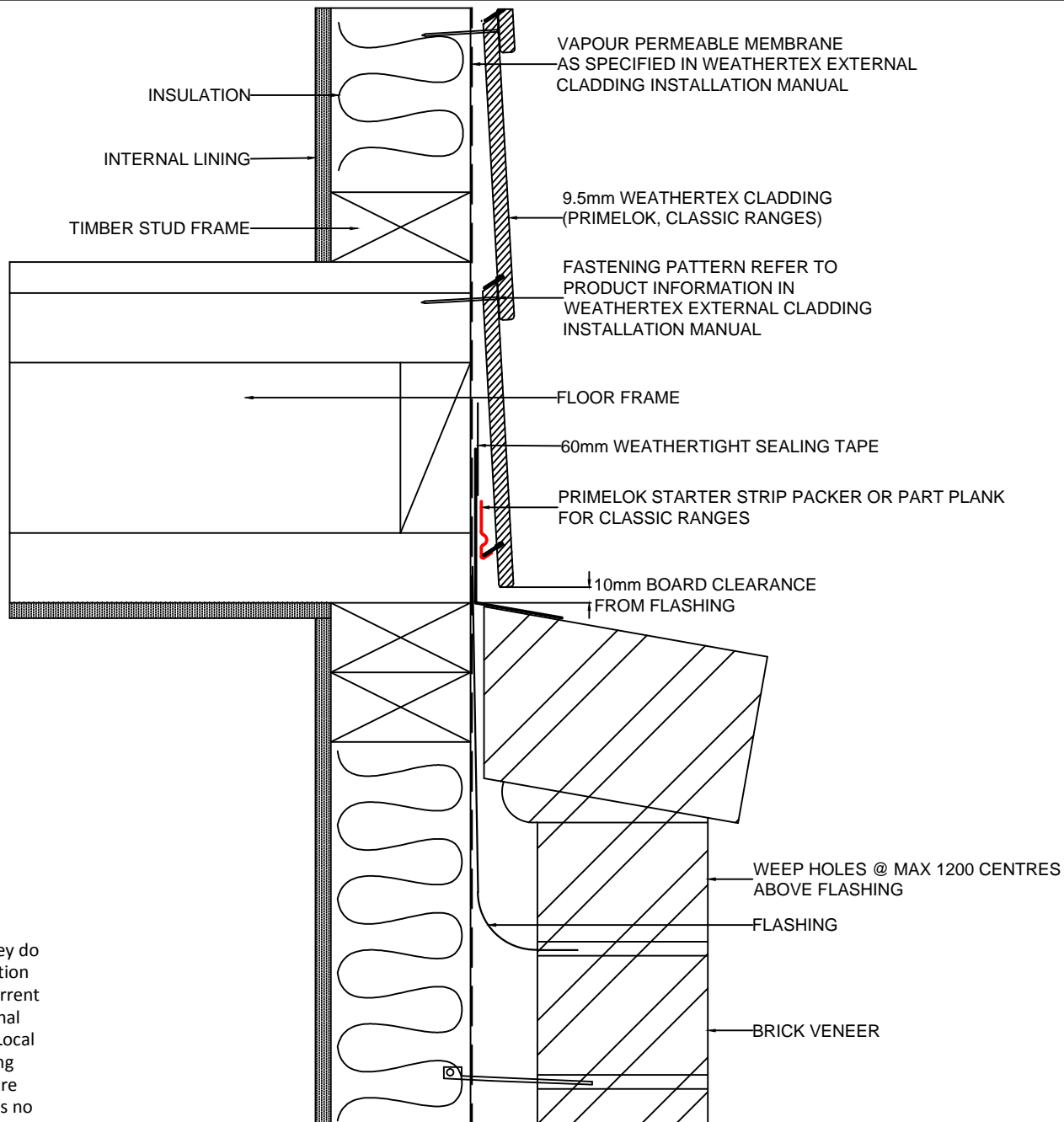
DRAWN BY:
A.MOATE

CHECKED BY:
R.STUART

DATE:
09.07.20

DRAWING No.:
CD-DF-27

SHT SIZE
A4



These drawings are for information only. They do not contain full details required for construction and must be used in conjunction with the current issue WeatherTex Installation Manual, National Construction Code and any other State and Local Regulations. WeatherTex recommends gaining professional advice to ensure the drawings are suitable for your project. WeatherTex accepts no liability in respect to the use of these drawings.



DRAWING NAME:
DIRECT FIX INSTALLATION - SET BACK OVER BRICK VENEER
(PRIMELOK, CLASSIC RANGES)

SCALE:

DRAWN BY:

CHECKED BY:

DATE:

DRAWING No.:

SHT SIZE

NTS

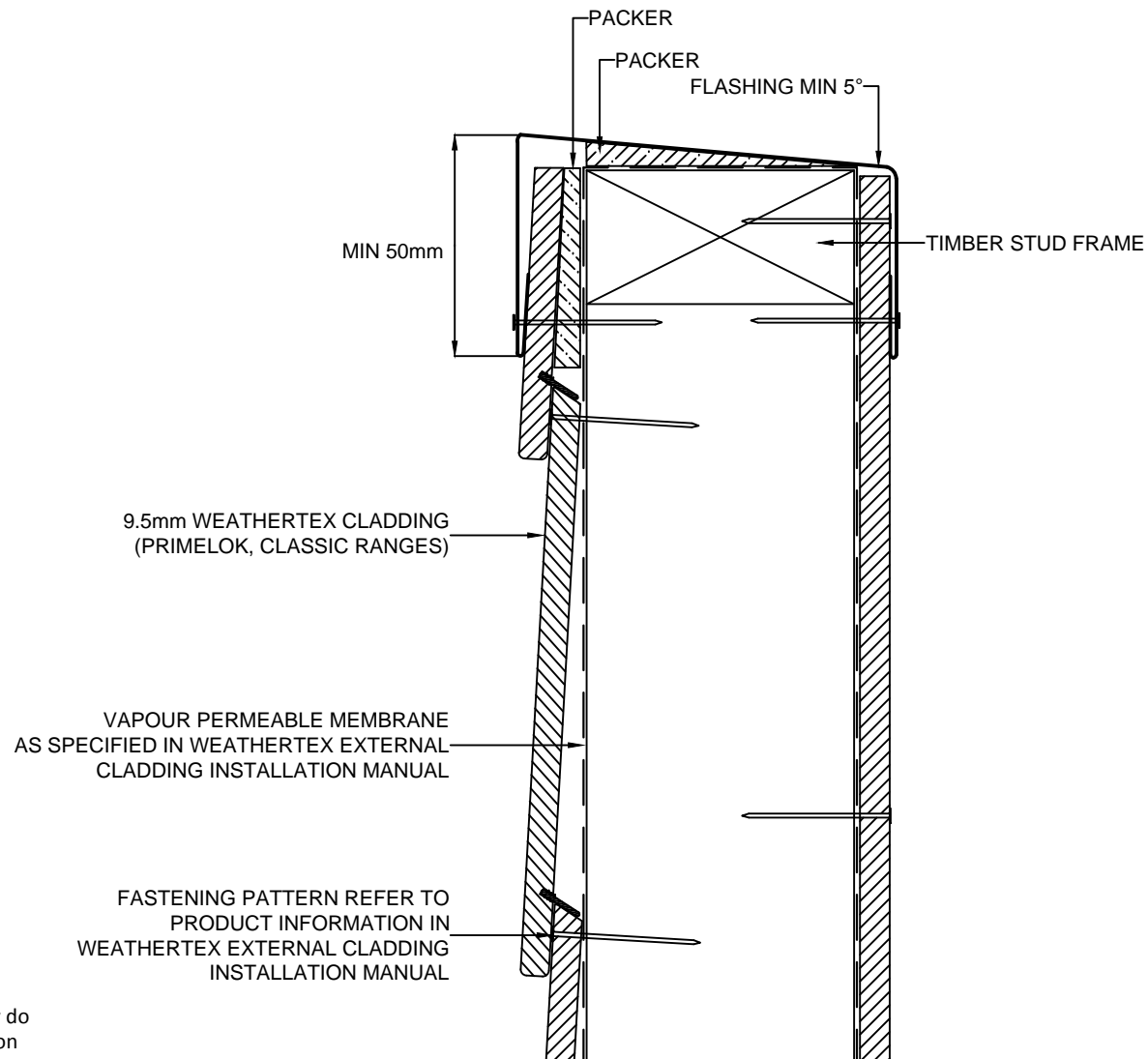
A.MOATE

R.STUART


09.07.20

CD-DF-29

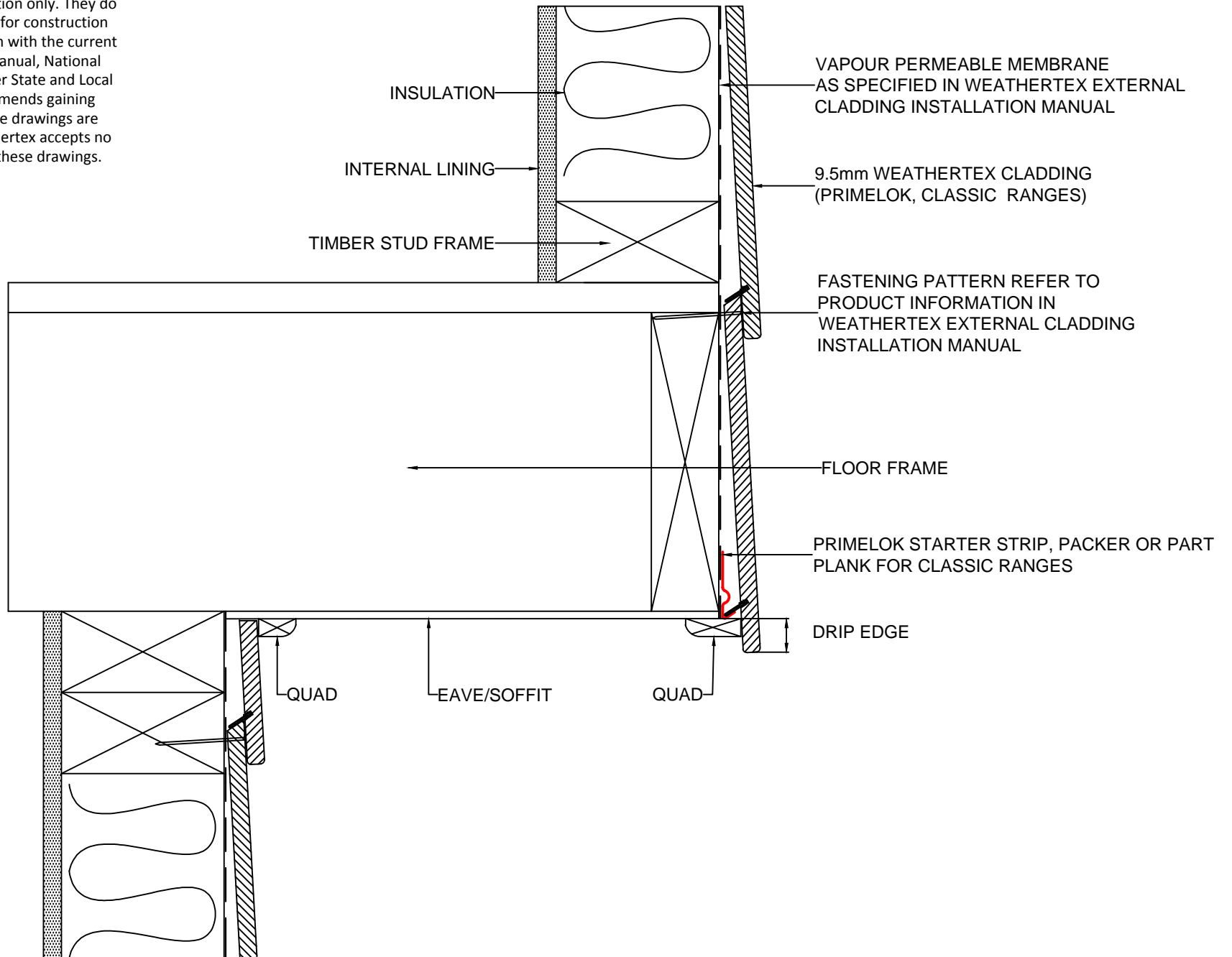
A4



These drawings are for information only. They do not contain full details required for construction and must be used in conjunction with the current issue Weathertex Installation Manual, National Construction Code and any other State and Local Regulations. Weathertex recommends gaining professional advice to ensure the drawings are suitable for your project. Weathertex accepts no liability in respect to the use of these drawings.

	DRAWING NAME: DIRECT FIX INSTALLATION - PARAPET OR BALUSTRADE (PRIMELOK, CLASSIC RANGES)	SCALE: NTS	DRAWN BY: A.MOATE	CHECKED BY: R.STUART	DATE: 10.07.20	DRAWING No.: CD-DF-31	SHT SIZE A4

These drawings are for information only. They do not contain full details required for construction and must be used in conjunction with the current issue Weathertex Installation Manual, National Construction Code and any other State and Local Regulations. Weathertex recommends gaining professional advice to ensure the drawings are suitable for your project. Weathertex accepts no liability in respect to the use of these drawings.



DRAWING NAME:
DIRECT FIX INSTALLATION - CANTILEVER ROOF
(PRIMELOK, CLASSIC RANGES)

SCALE:
NTS

DRAWN BY:
A.MOATE

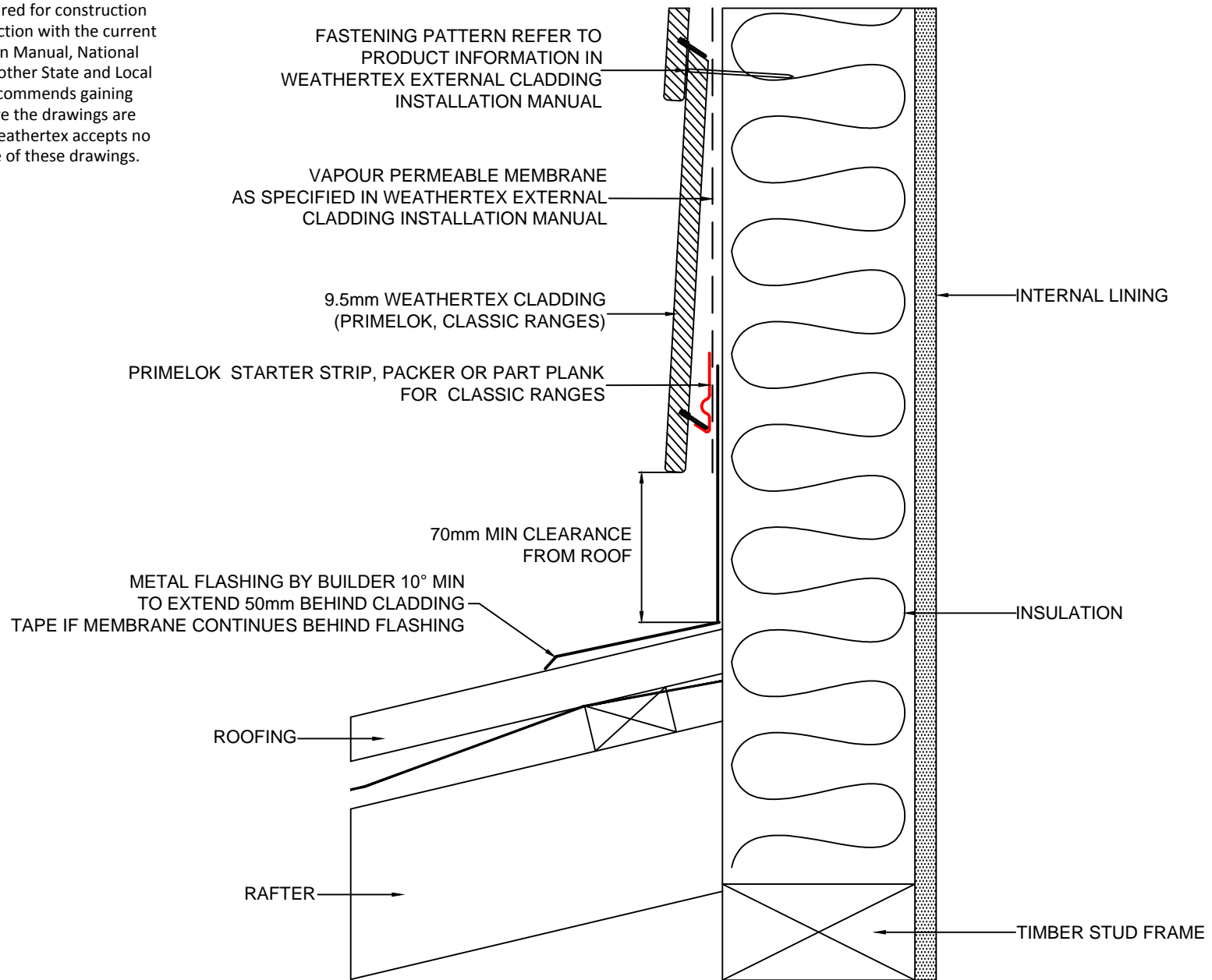
CHECKED BY:
R.STUART

DATE:
10.07.20

DRAWING No.:
CD-DF-33

SHT SIZE
A4

These drawings are for information only. They do not contain full details required for construction and must be used in conjunction with the current issue Weathertex Installation Manual, National Construction Code and any other State and Local Regulations. Weathertex recommends gaining professional advice to ensure the drawings are suitable for your project. Weathertex accepts no liability in respect to the use of these drawings.



DRAWING NAME:
DIRECT FIX INSTALLATION - ROOF CLEARANCE
(PRIMELOK, CLASSIC RANGES)

SCALE:

NTS

DRAWN BY:

A.MOATE

CHECKED BY:

R.STUART

DATE:

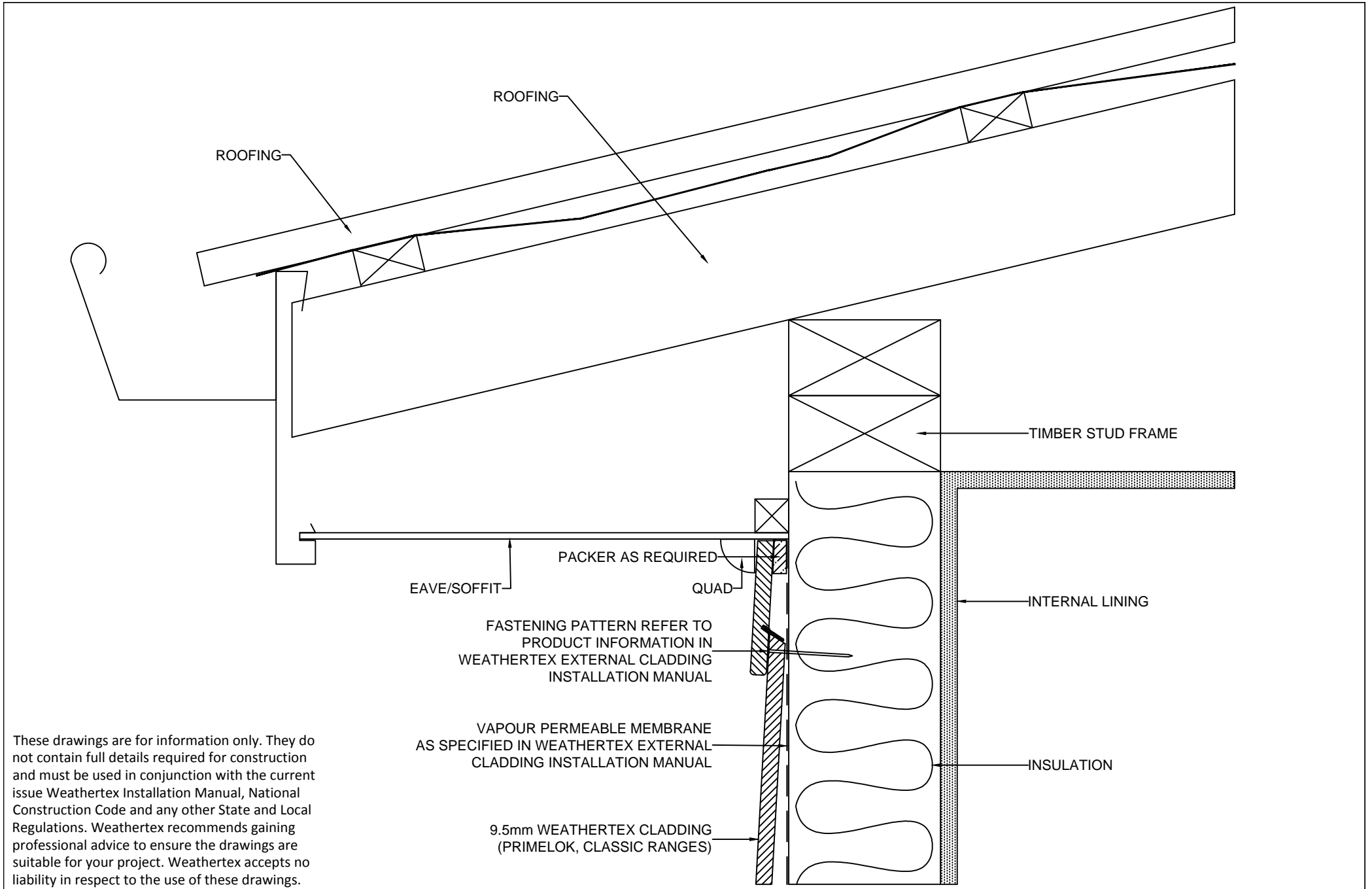
10.07.20

DRAWING No.:


CD-DF-35

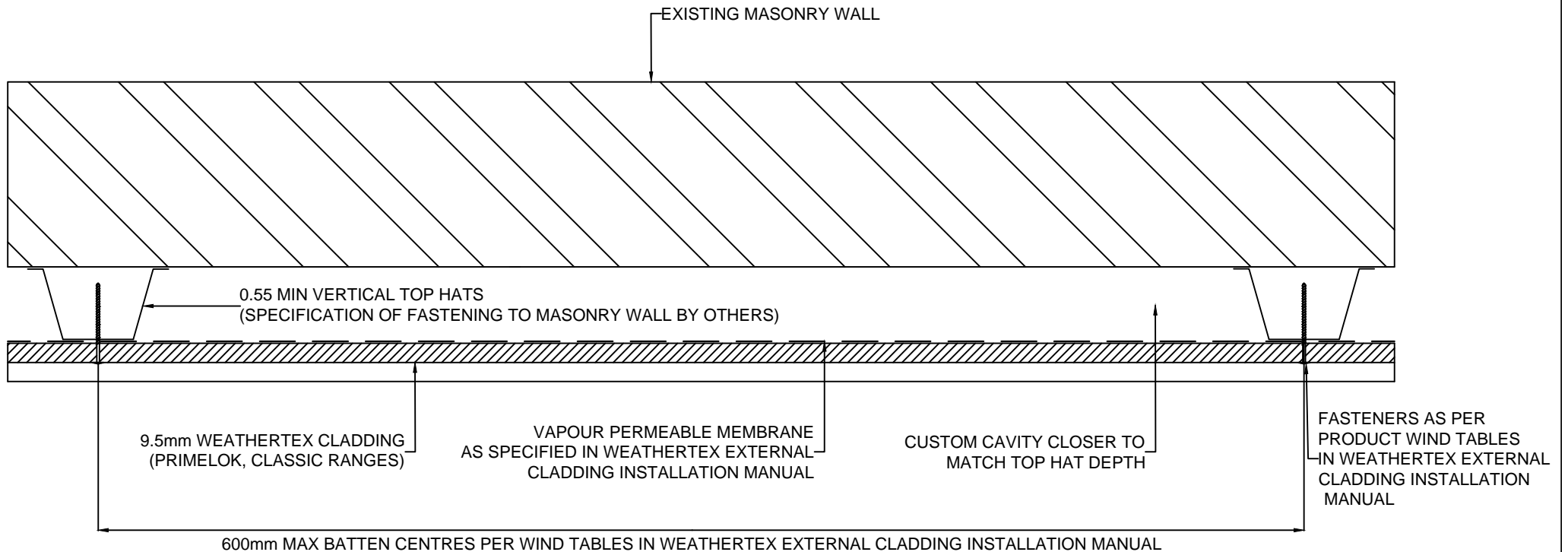
SHT SIZE

A4




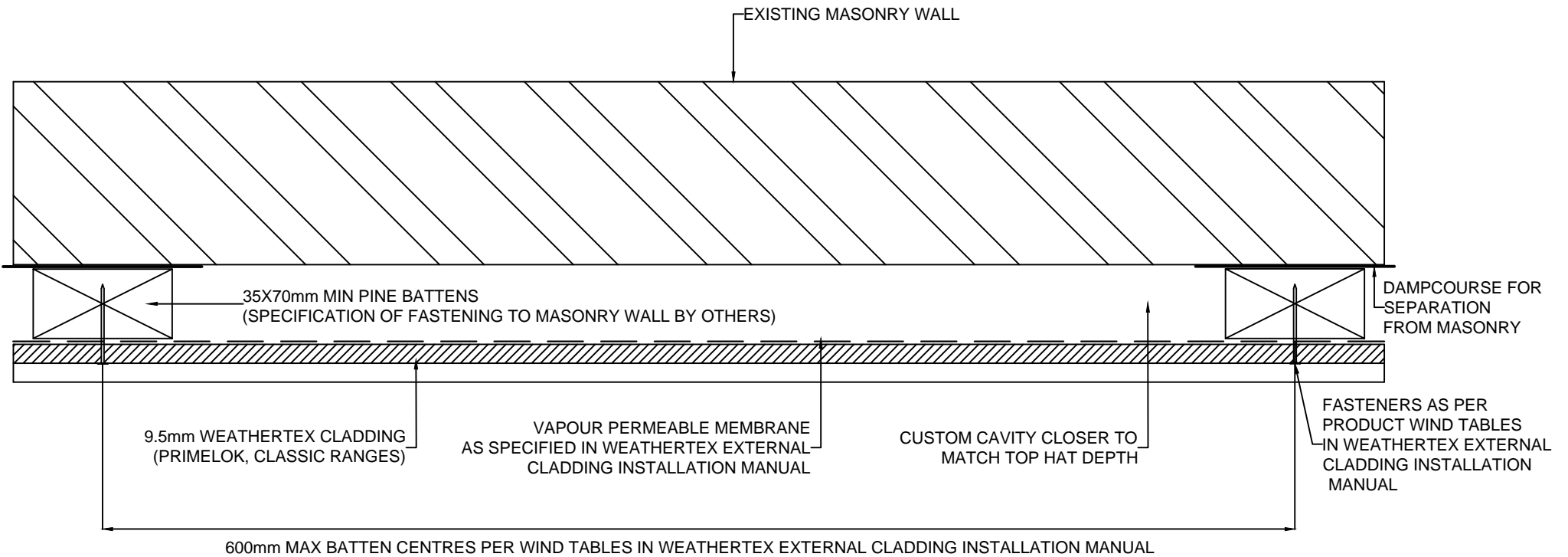
These drawings are for information only. They do not contain full details required for construction and must be used in conjunction with the current issue Weathertex Installation Manual, National Construction Code and any other State and Local Regulations. Weathertex recommends gaining professional advice to ensure the drawings are suitable for your project. Weathertex accepts no liability in respect to the use of these drawings.

	DRAWING NAME: DIRECT FIX INSTALLATION - EAVE/SOFFIT (PRIMELOK, CLASSIC RANGES)	SCALE:	DRAWN BY:	CHECKED BY:	DATE:	DRAWING No.:	SHT SIZE
		NTS	A.MOATE	R.STUART	10.07.20	CD-DF-37	A4



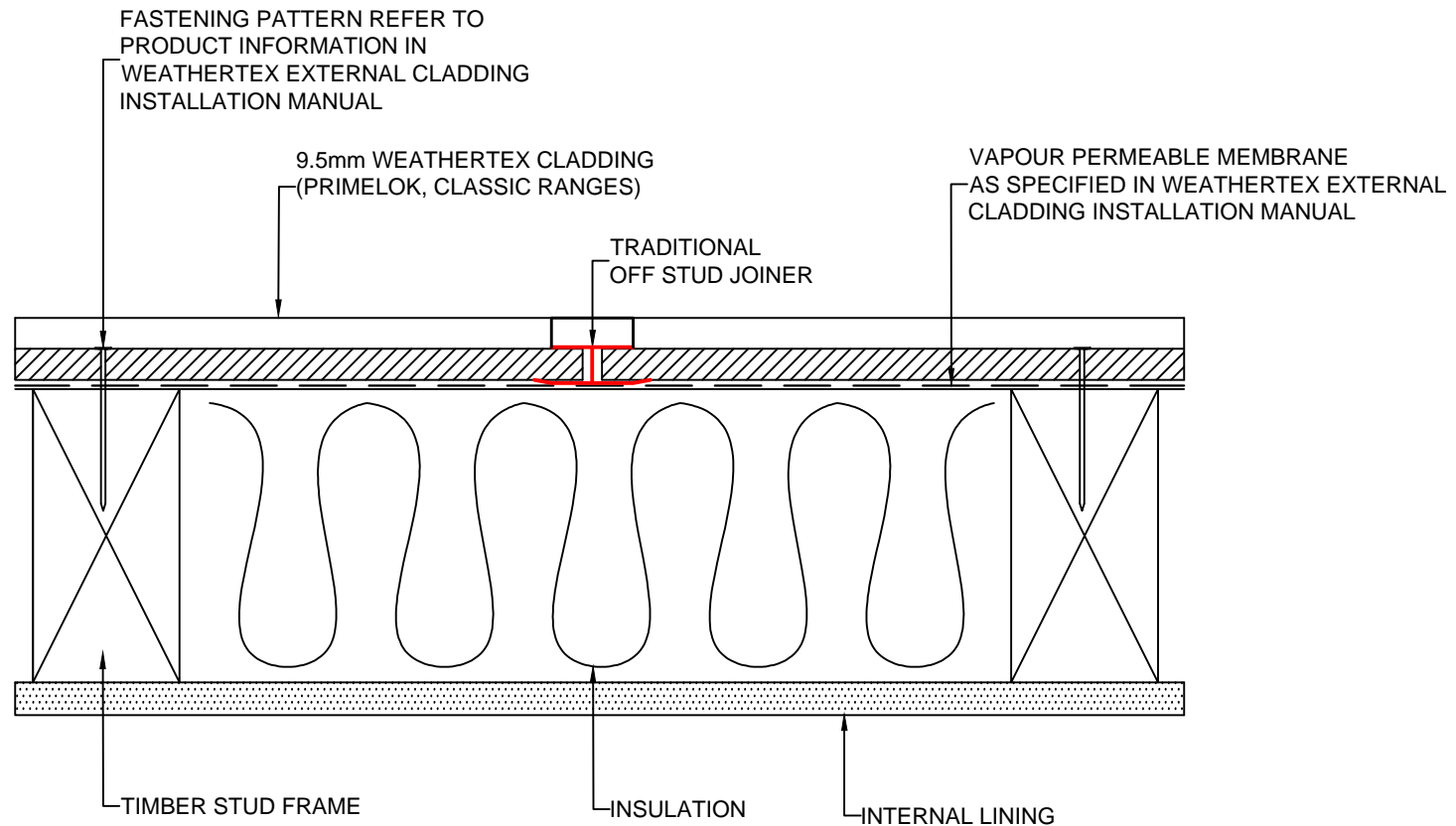
These drawings are for information only. They do not contain full details required for construction and must be used in conjunction with the current issue WeatherTex Installation Manual, National Construction Code and any other State and Local Regulations. WeatherTex recommends gaining professional advice to ensure the drawings are suitable for your project. WeatherTex accepts no liability in respect to the use of these drawings.

	DRAWING NAME: DIRECT FIX INSTALLATION - CLADDING OVER MASONRY (TOP HATS) (PRIMELOK, CLASSIC RANGES)	SCALE: NTS	DRAWN BY: A.MOATE	CHECKED BY: R.STUART	DATE: 10.07.20	DRAWING No.: CD-DF-39	SHT SIZE A4




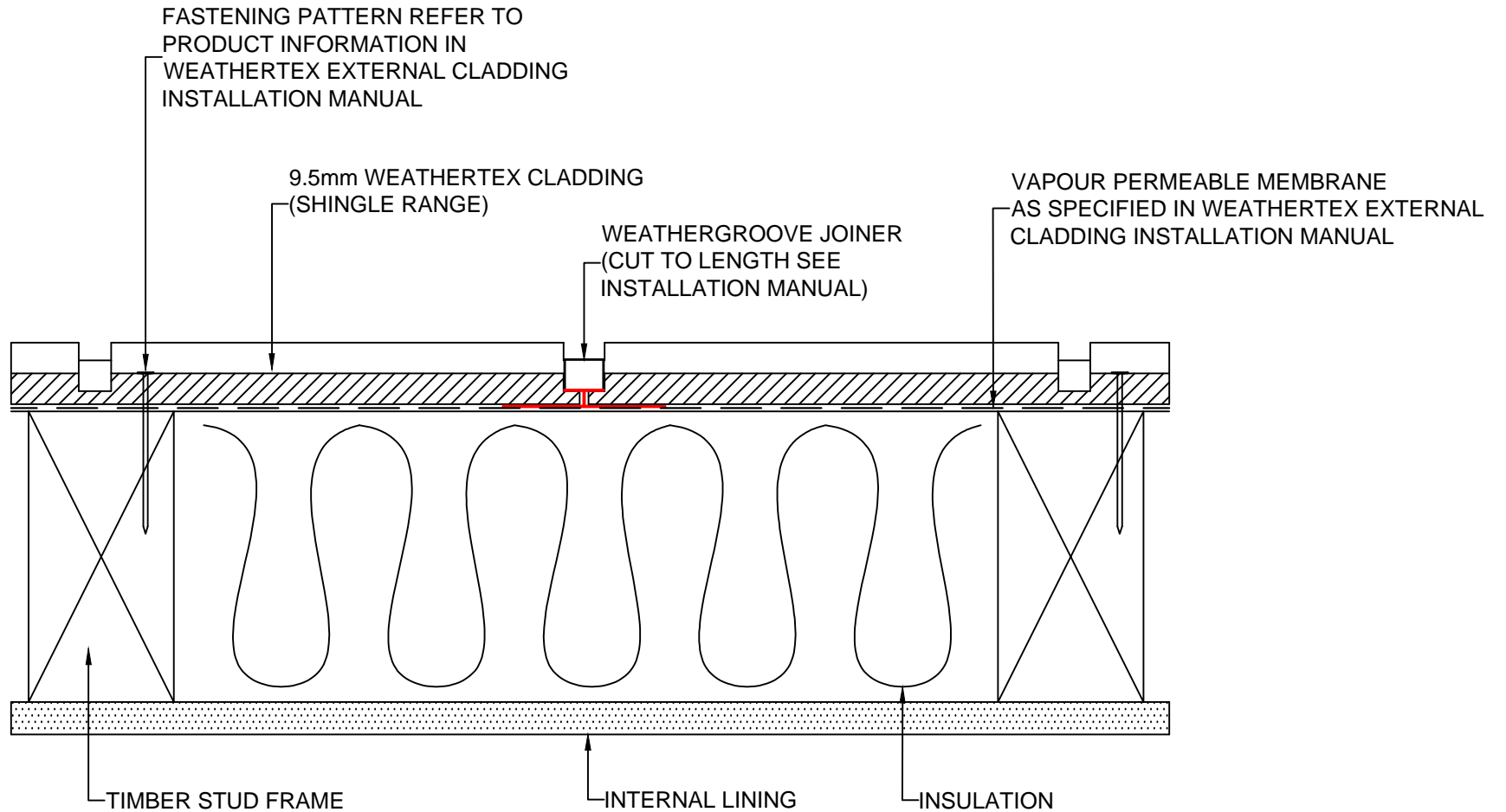
These drawings are for information only. They do not contain full details required for construction and must be used in conjunction with the current issue WeatherTex Installation Manual, National Construction Code and any other State and Local Regulations. WeatherTex recommends gaining professional advice to ensure the drawings are suitable for your project. WeatherTex accepts no liability in respect to the use of these drawings.

	DRAWING NAME: DIRECT FIX INSTALLATION - CLADDING OVER MASONRY (BATTENS) (PRIMELOK, CLASSIC RANGES)	SCALE: NTS	DRAWN BY: A.MOATE	CHECKED BY: R.STUART	DATE: 10.07.20	DRAWING No.: CD-DF-41	SHT SIZE A4



These drawings are for information only. They do not contain full details required for construction and must be used in conjunction with the current issue WeatherTex Installation Manual, National Construction Code and any other State and Local Regulations. WeatherTex recommends gaining professional advice to ensure the drawings are suitable for your project. WeatherTex accepts no liability in respect to the use of these drawings.

	DRAWING NAME: DIRECT FIX INSTALLATION - TRADITIONAL JOINER (PRIMELOK, CLASSIC RANGES (EXC SHINGLES))	SCALE: NTS	DRAWN BY: A.MOATE	CHECKED BY: R.STUART	DATE: 10.07.20	DRAWING No.: CD-DF-42	SHT SIZE A4



These drawings are for information only. They do not contain full details required for construction and must be used in conjunction with the current issue Weathertex Installation Manual, National Construction Code and any other State and Local Regulations. Weathertex recommends gaining professional advice to ensure the drawings are suitable for your project. Weathertex accepts no liability in respect to the use of these drawings.



DRAWING NAME:
DIRECT FIX INSTALLATION - WEATHERGROOVE JOINER
(SHINGLE RANGE)

SCALE:
NTS

DRAWN BY:
A.MOATE

CHECKED BY:
R.STUART

DATE:
13.07.20

DRAWING No.:
CD-DF-46

SHT SIZE
A4