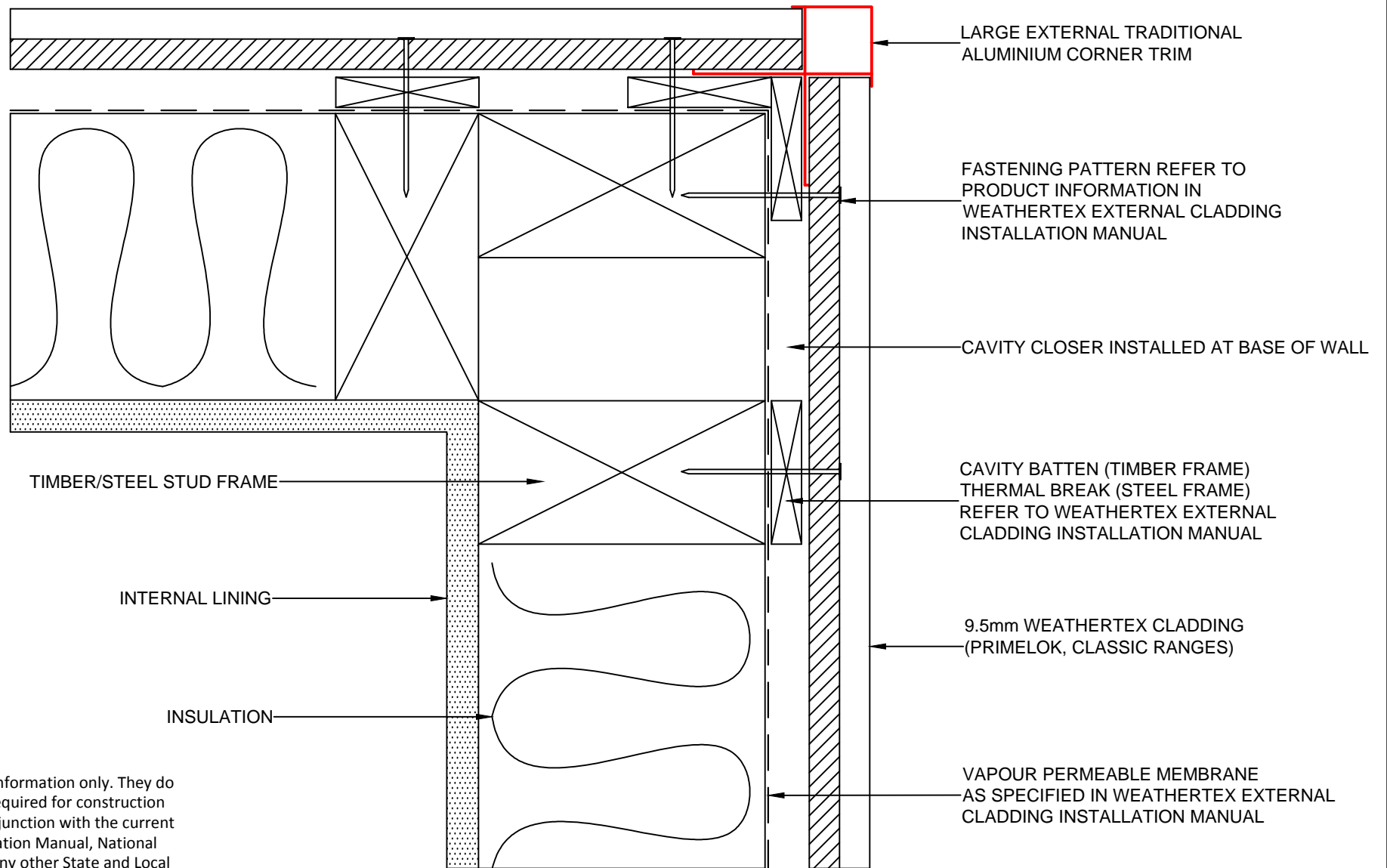


**WEATHERTEX
CONSTRUCTION
DETAILS**

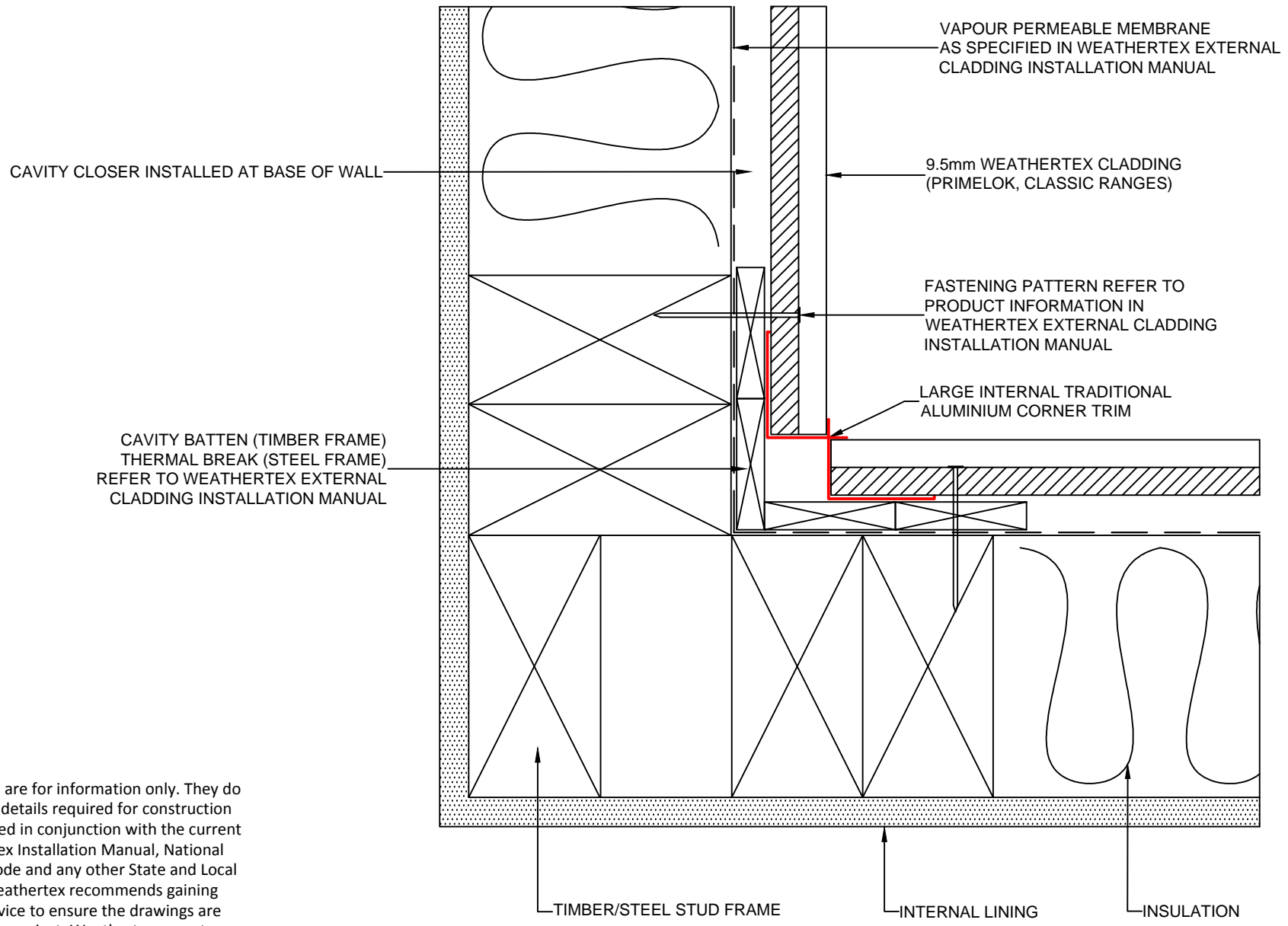
CLASSIC WEATHERBOARDS

CAVITY &
STEEL FRAME
CONSTRUCTION



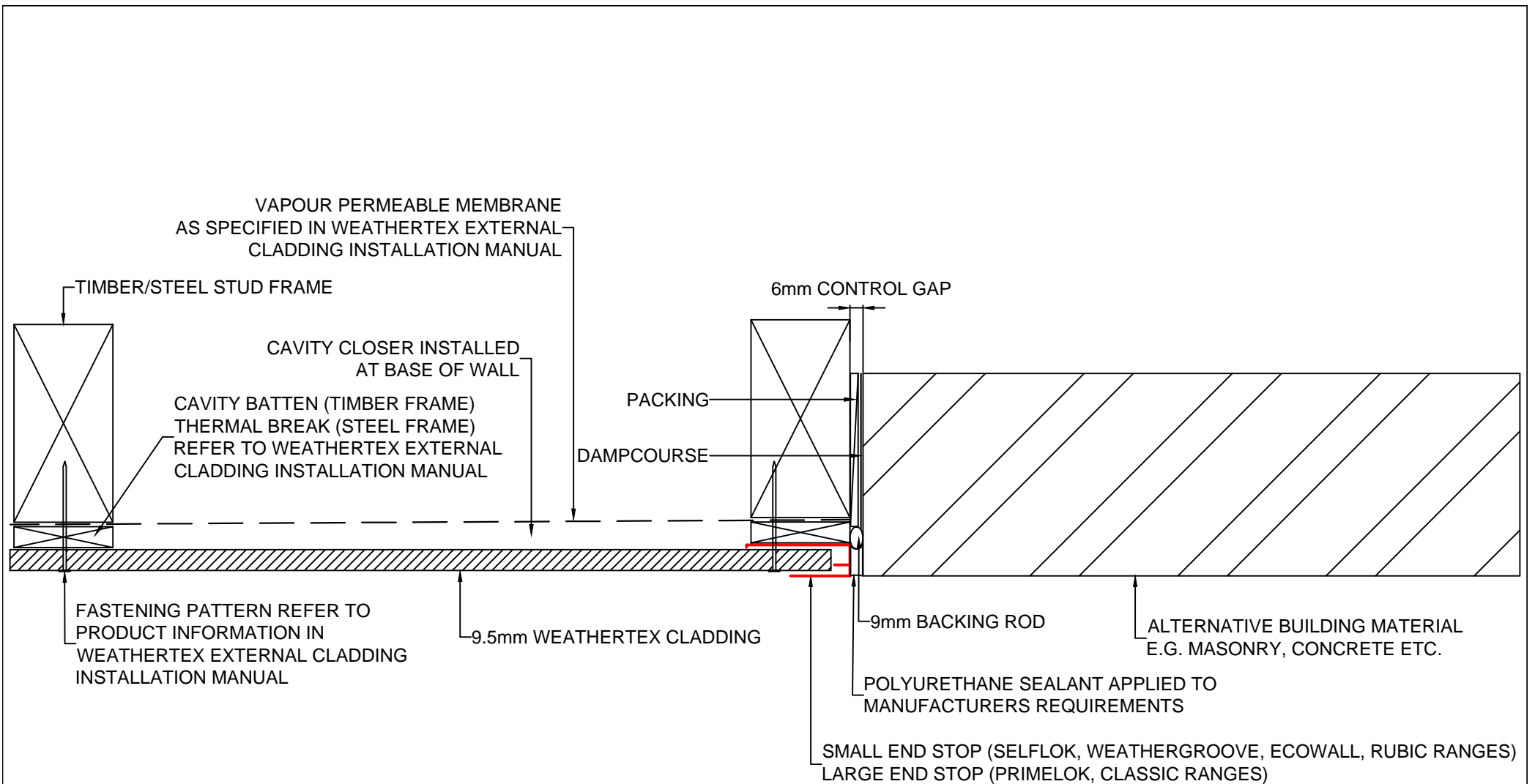
These drawings are for information only. They do not contain full details required for construction and must be used in conjunction with the current issue Weathertex Installation Manual, National Construction Code and any other State and Local Regulations. Weathertex recommends gaining professional advice to ensure the drawings are suitable for your project. Weathertex accepts no liability in respect to the use of these drawings.

| | | | | | | | |
|--|--|---------------|----------------------|-------------------------|-------------------|-------------------------|----------------|
| | DRAWING NAME: CAVITY FIX INSTALLATION - LARGE EXTERNAL TRADITIONAL CORNER (PRIMELOK, CLASSIC RANGES) | SCALE: NTS | DRAWN BY: A.MOATE | CHECKED BY: R.STUART | DATE: 21.07.20 | DRAWING No.: CD-CF-5 | SHT SIZE A4 |
|--|--|---------------|----------------------|-------------------------|-------------------|-------------------------|----------------|



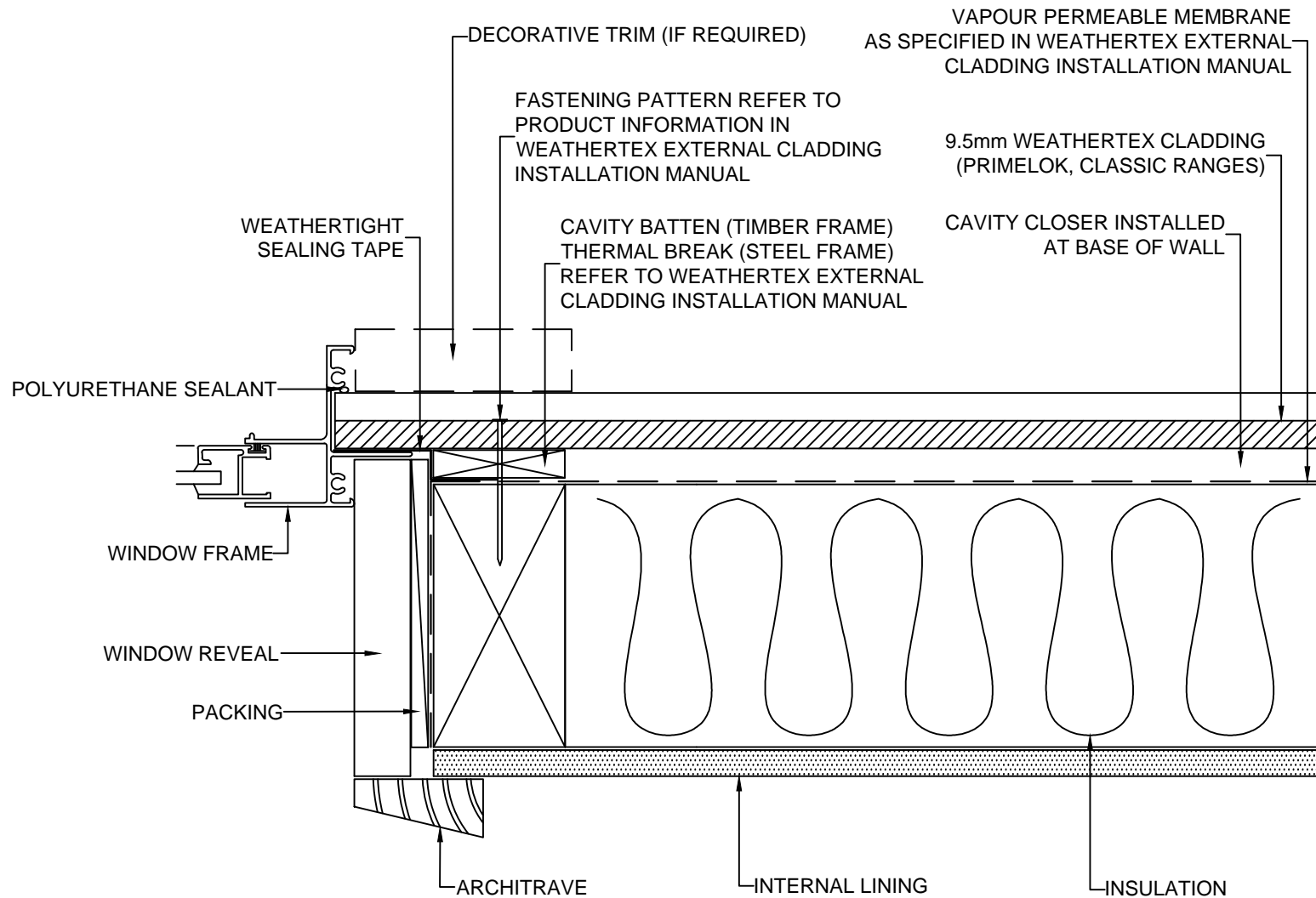
These drawings are for information only. They do not contain full details required for construction and must be used in conjunction with the current issue Weathertex Installation Manual, National Construction Code and any other State and Local Regulations. Weathertex recommends gaining professional advice to ensure the drawings are suitable for your project. Weathertex accepts no liability in respect to the use of these drawings.

| | | | | | | | |
|--|--|---------------|----------------------|-------------------------|-------------------|-------------------------|----------------|
| | DRAWING NAME: CAVITY FIX INSTALLATION - LARGE INTERNAL TRADITIONAL CORNER (PRIMELOK, CLASSIC RANGES) | SCALE: NTS | DRAWN BY: A.MOATE | CHECKED BY: R.STUART | DATE: 21.07.20 | DRAWING No.: CD-CF-6 | SHT SIZE A4 |
|--|--|---------------|----------------------|-------------------------|-------------------|-------------------------|----------------|



These drawings are for information only. They do not contain full details required for construction and must be used in conjunction with the current issue Weatherdex Installation Manual, National Construction Code and any other State and Local Regulations. Weatherdex recommends gaining professional advice to ensure the drawings are suitable for your project. Weatherdex accepts no liability in respect to the use of these drawings.

| | | | | | | | |
|--|--|---------------|----------------------|-------------------------|-------------------|-------------------------|----------------|
| | DRAWING NAME: CAVITY FIX INSTALLATION - END STOP SEPARATION FROM ALTERNATIVE BUILDING MATERIALS (ALL RANGES) | SCALE: NTS | DRAWN BY: A.MOATE | CHECKED BY: R.STUART | DATE: 21.07.20 | DRAWING No.: CD-CF-7 | SHT SIZE A4 |
|--|--|---------------|----------------------|-------------------------|-------------------|-------------------------|----------------|

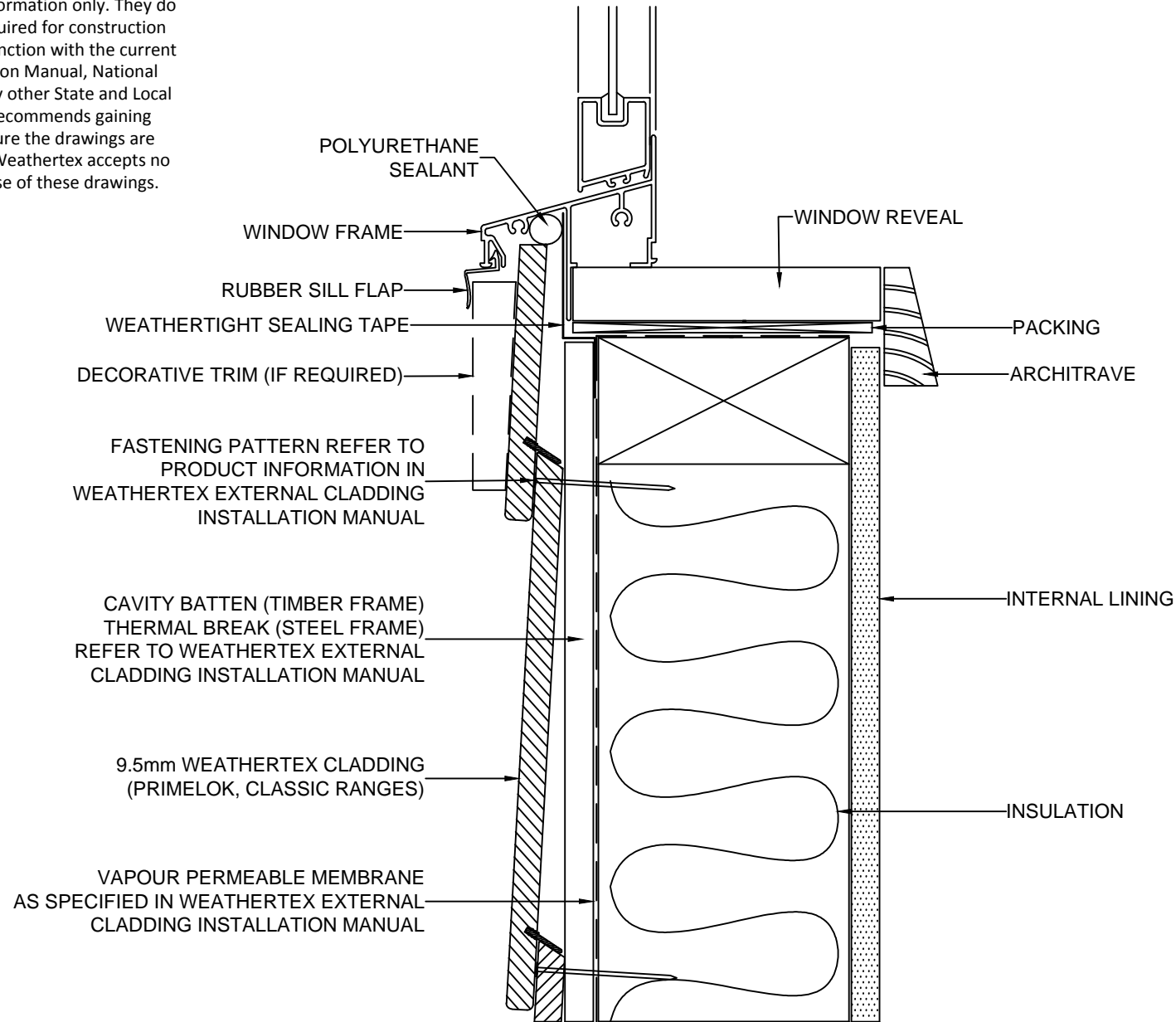


These drawings are for information only. They do not contain full details required for construction and must be used in conjunction with the current issue Weatherex Installation Manual, National Construction Code and any other State and Local Regulations. Weatherex recommends gaining professional advice to ensure the drawings are suitable for your project. Weatherex accepts no liability in respect to the use of these drawings.

WINDOW MEMBRANE TRIM DETAIL TO BE INSTALLED TO AS4200.2:2017 Fig 4.7

| | | | | | | | |
|--|--|---------------|----------------------|-------------------------|-------------------|--------------------------|----------------|
| | DRAWING NAME: CAVITY FIX INSTALLATION - WINDOW FRAME JAMB (PRIMELOK, CLASSIC RANGES) | SCALE: NTS | DRAWN BY: A.MOATE | CHECKED BY: R.STUART | DATE: 27.07.20 | DRAWING No.: CD-CF-11 | SHT SIZE A4 |
| | | | | | | | |

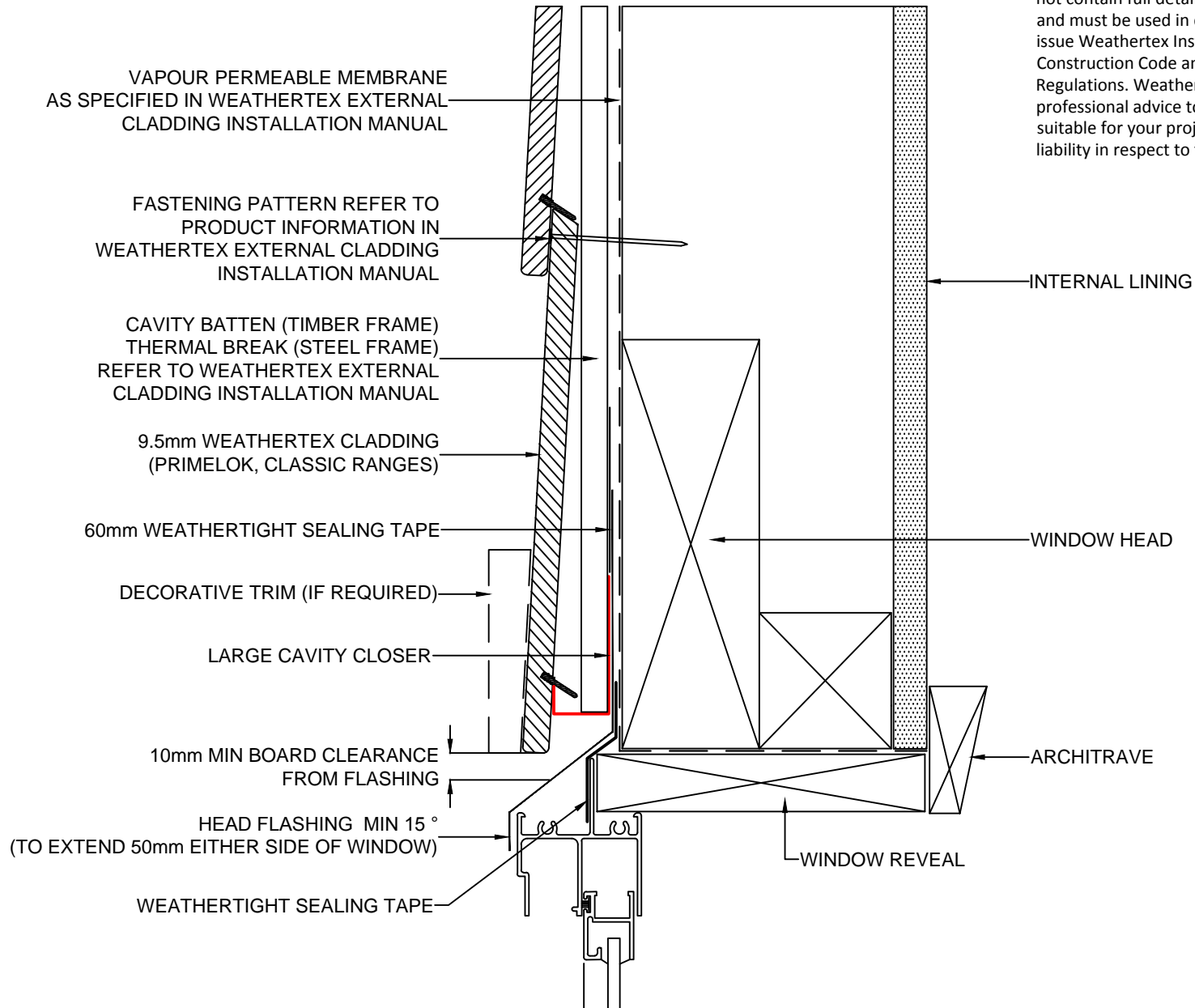
These drawings are for information only. They do not contain full details required for construction and must be used in conjunction with the current issue Weathertex Installation Manual, National Construction Code and any other State and Local Regulations. Weathertex recommends gaining professional advice to ensure the drawings are suitable for your project. Weathertex accepts no liability in respect to the use of these drawings.



WINDOW MEMBRANE TRIM DETAIL TO BE INSTALLED TO AS4200.2:2017 Fig 4.7

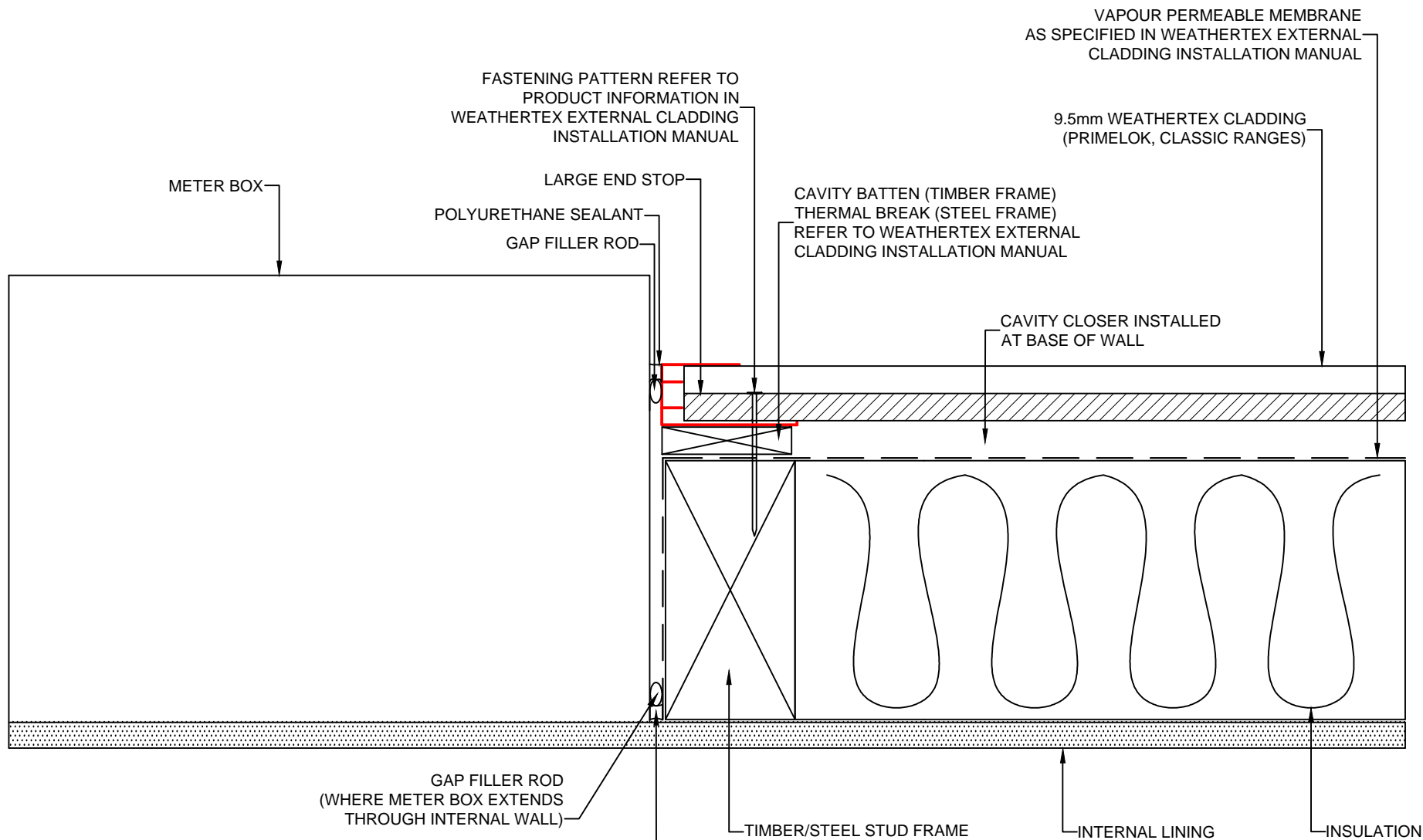
| | | | | | | | |
|--|--|---------------|----------------------|-------------------------|-------------------|--------------------------|----------------|
| | DRAWING NAME: CAVITY FIX INSTALLATION - WINDOW FRAME SILL (PRIMELOK, CLASSIC RANGES) | SCALE: NTS | DRAWN BY: A.MOATE | CHECKED BY: R.STUART | DATE: 27.07.20 | DRAWING No.: CD-CF-12 | SHT SIZE A4 |
| | | | | | | | |

These drawings are for information only. They do not contain full details required for construction and must be used in conjunction with the current issue Weathertex Installation Manual, National Construction Code and any other State and Local Regulations. Weathertex recommends gaining professional advice to ensure the drawings are suitable for your project. Weathertex accepts no liability in respect to the use of these drawings.



WINDOW MEMBRANE TRIM DETAIL TO BE INSTALLED TO AS4200.2:2017 Fig 4.7

| | | | | | | | |
|--|--|--------|-----------|-------------|----------|--------------|----------|
| | DRAWING NAME: CAVITY FIX INSTALLATION - WINDOW FRAME HEAD (PRIMELOK, CLASSIC RANGES) | SCALE: | DRAWN BY: | CHECKED BY: | DATE: | DRAWING No.: | SHT SIZE |
| | | NTS | A.MOATE | R.STUART | 27.07.20 | CD-CF-13 | A4 |



FASTENING PATTERN REFER TO PRODUCT INFORMATION IN WEATHERTEX EXTERNAL CLADDING INSTALLATION MANUAL

VAPOUR PERMEABLE MEMBRANE AS SPECIFIED IN WEATHERTEX EXTERNAL CLADDING INSTALLATION MANUAL

9.5mm WEATHERTEX CLADDING (PRIMELOK, CLASSIC RANGES)

CAVITY BATTEN (TIMBER FRAME) THERMAL BREAK (STEEL FRAME) REFER TO WEATHERTEX EXTERNAL CLADDING INSTALLATION MANUAL

CAVITY CLOSER INSTALLED AT BASE OF WALL

GAP FILLER ROD (WHERE METER BOX EXTENDS THROUGH INTERNAL WALL)

POLYURETHANE SEALANT (WHERE METER BOX EXTENDS THROUGH INTERNAL WALL)

TIMBER/STEEL STUD FRAME

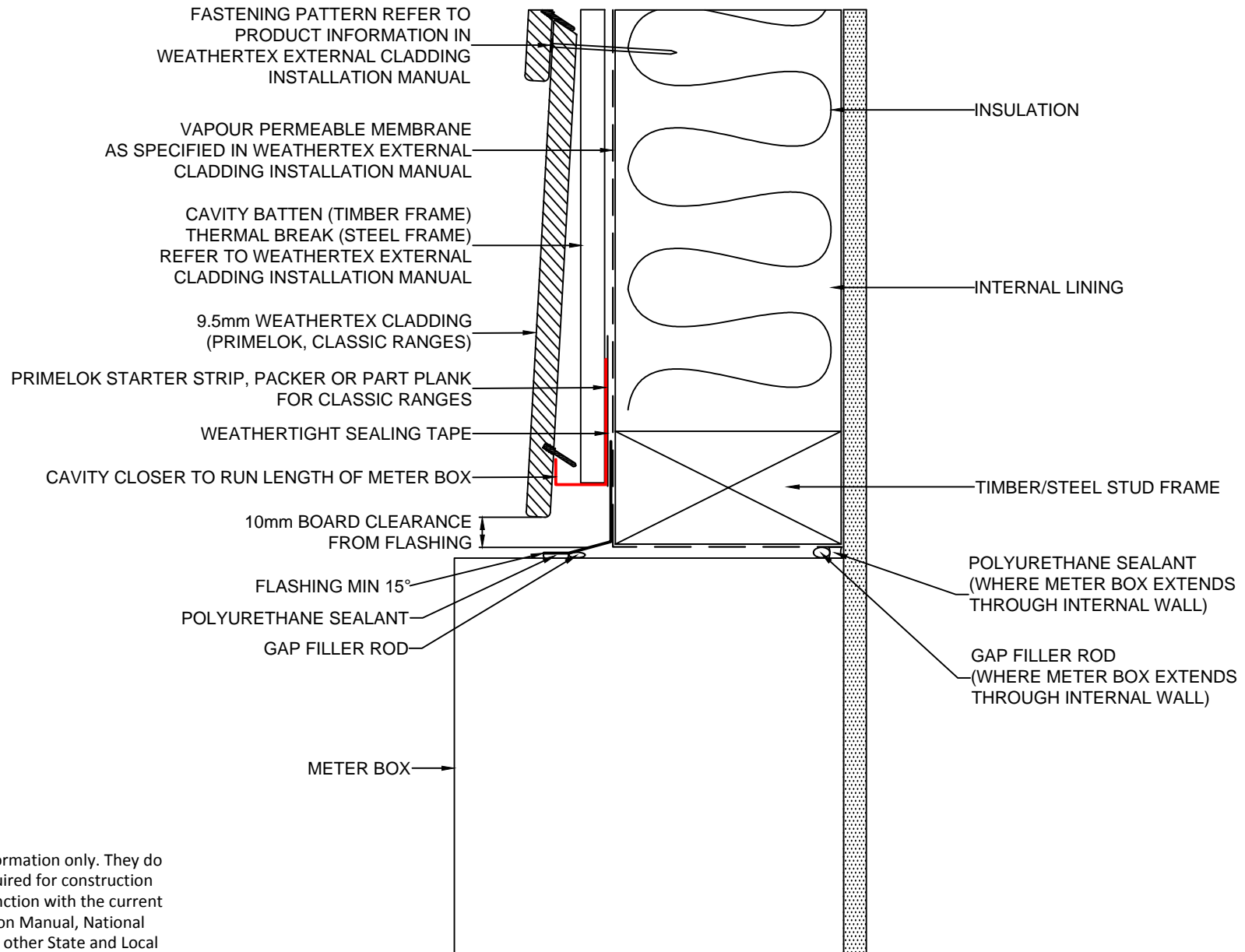
INTERNAL LINING

INSULATION

These drawings are for information only. They do not contain full details required for construction and must be used in conjunction with the current issue WeatherTex Installation Manual, National Construction Code and any other State and Local Regulations. WeatherTex recommends gaining professional advice to ensure the drawings are suitable for your project. WeatherTex accepts no liability in respect to the use of these drawings.


METER BOX TRIM DETAIL TO BE INSTALLED TO AS4200.2:2017 Fig 4.7

| | | | | | | | |
|--|--|---------------|----------------------|-------------------------|-------------------|--------------------------|----------------|
| | DRAWING NAME: CAVITY FIX INSTALLATION - METER BOX JAMB (PRIMLOK, CLASSIC RANGES) | SCALE: NTS | DRAWN BY: A.MOATE | CHECKED BY: R.STUART | DATE: 21.07.20 | DRAWING No.: CD-CF-17 | SHT SIZE A4 |
| | | | | | | | |

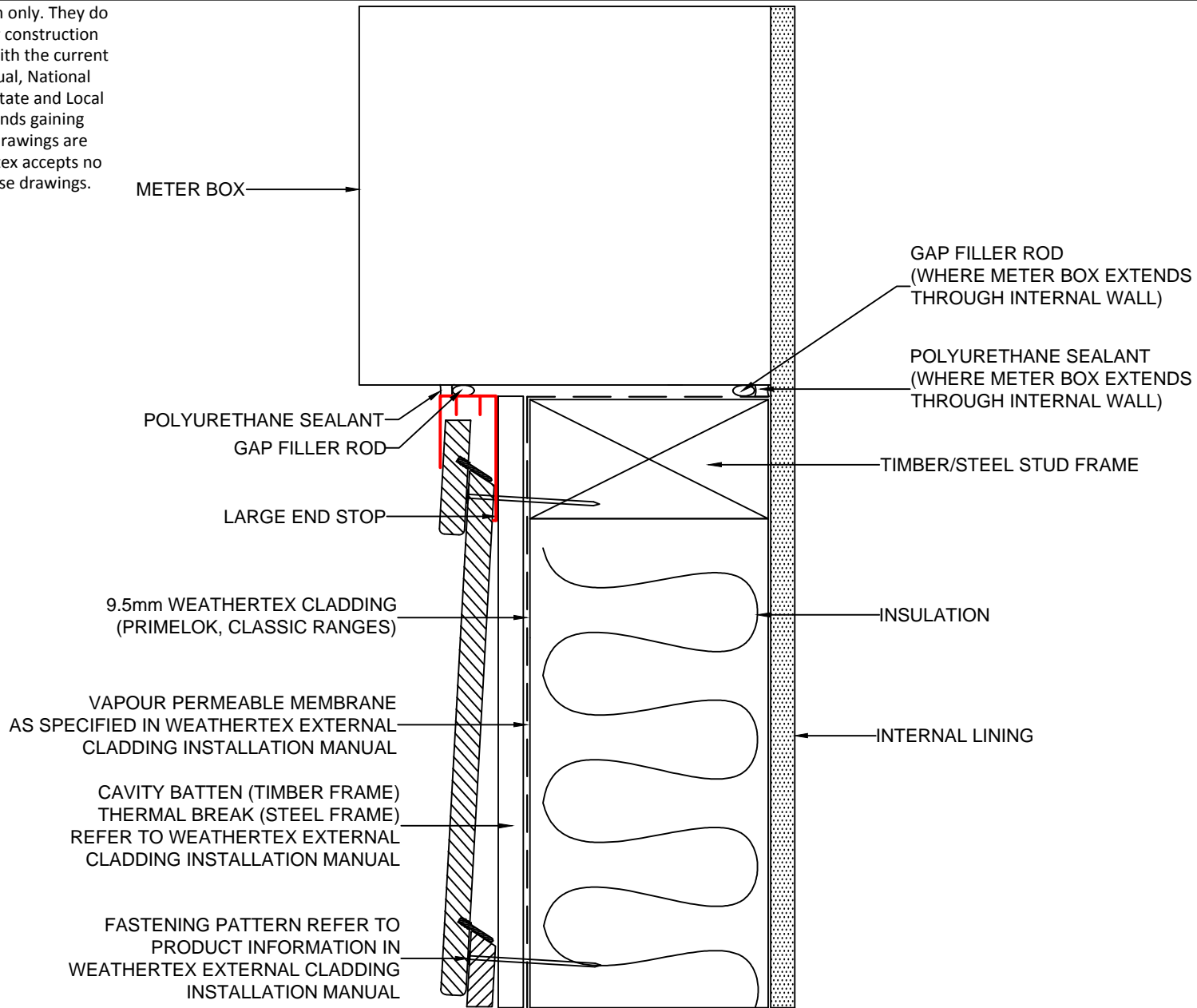


These drawings are for information only. They do not contain full details required for construction and must be used in conjunction with the current issue WeatherTex Installation Manual, National Construction Code and any other State and Local Regulations. WeatherTex recommends gaining professional advice to ensure the drawings are suitable for your project. WeatherTex accepts no liability in respect to the use of these drawings.

METER BOX MEMBRANE TRIM DETAIL TO BE INSTALLED TO AS4200.2:2017 Fig 4.7

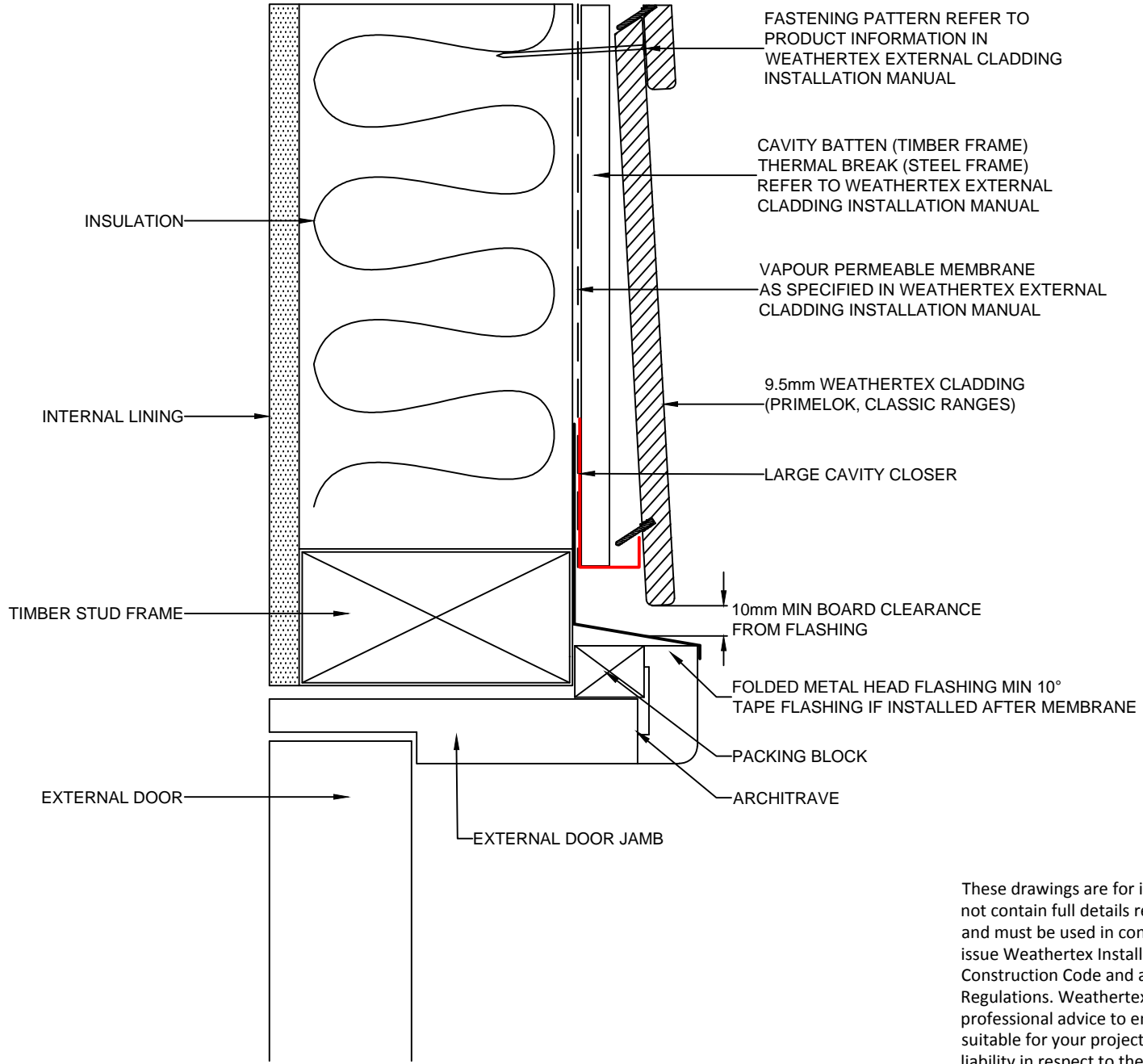
| | | | | | | | |
|--|---|---------------|----------------------|-------------------------|-------------------|--------------------------|----------------|
|  | DRAWING NAME: CAVITY FIX INSTALLATION - METER BOX HEAD (PRIMELOK, CLASSIC RANGES) | SCALE: NTS | DRAWN BY: A.MOATE | CHECKED BY: R.STUART | DATE: 21.07.20 | DRAWING No.: CD-CF-18 | SHT SIZE A4 |
| | | | | | | | |

These drawings are for information only. They do not contain full details required for construction and must be used in conjunction with the current issue Weathertex Installation Manual, National Construction Code and any other State and Local Regulations. Weathertex recommends gaining professional advice to ensure the drawings are suitable for your project. Weathertex accepts no liability in respect to the use of these drawings.



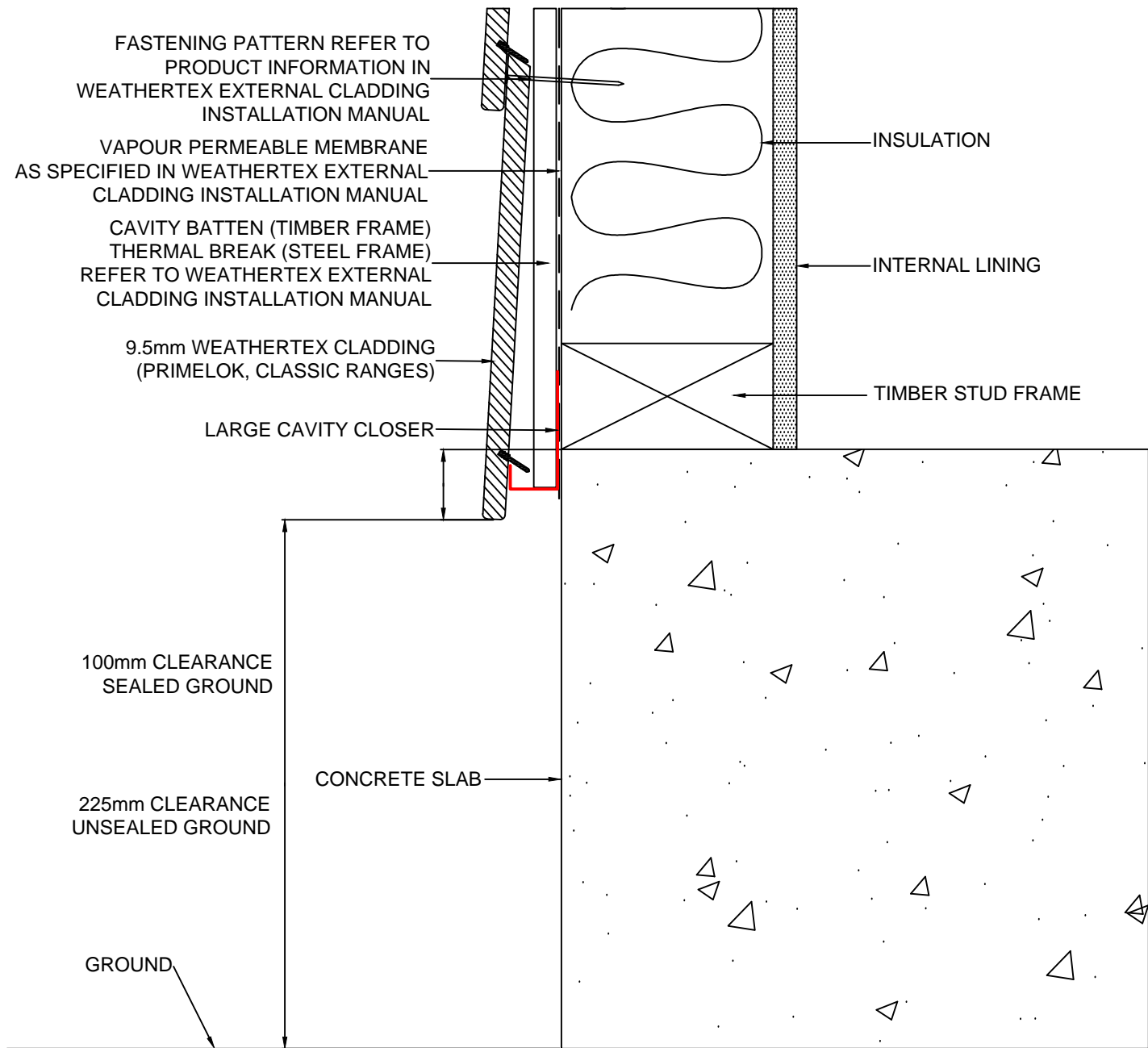
METER BOX MEMBRANE TRIM DETAIL TO BE INSTALLED TO AS4200.2:2017 Fig 4.7

| | | | | | | | |
|--|---|---------------|----------------------|-------------------------|-------------------|--------------------------|----------------|
| | DRAWING NAME: CAVITY FIX INSTALLATION - METER BOX SILL (PRIMELOK, CLASSIC RANGES) | SCALE: NTS | DRAWN BY: A.MOATE | CHECKED BY: R.STUART | DATE: 21.07.20 | DRAWING No.: CD-CF-19 | SHT SIZE A4 |
| | | | | | | | |



These drawings are for information only. They do not contain full details required for construction and must be used in conjunction with the current issue Weathertex Installation Manual, National Construction Code and any other State and Local Regulations. Weathertex recommends gaining professional advice to ensure the drawings are suitable for your project. Weathertex accepts no liability in respect to the use of these drawings.

| | | | | | | | |
|--|--|---------------|----------------------|-------------------------|-------------------|--------------------------|----------------|
| | DRAWING NAME: CAVITY FIX INSTALLATION - DOOR HEAD (PRIMELOK, CLASSIC RANGES) | SCALE: NTS | DRAWN BY: A.MOATE | CHECKED BY: R.STUART | DATE: 27.07.20 | DRAWING No.: CD-CF-21 | SHT SIZE A4 |
|--|--|---------------|----------------------|-------------------------|-------------------|--------------------------|----------------|



These drawings are for information only. They do not contain full details required for construction and must be used in conjunction with the current issue Weathertex Installation Manual, National Construction Code and any other State and Local Regulations. Weathertex recommends gaining professional advice to ensure the drawings are suitable for your project. Weathertex accepts no liability in respect to the use of these drawings.



DRAWING NAME:
 CAVITY FIX INSTALLATION - CONCRETE SLAB GROUND CLEARANCE
 (PRIMELOK, CLASSIC RANGES)

SCALE:
 NTS

DRAWN BY:
 A.MOATE

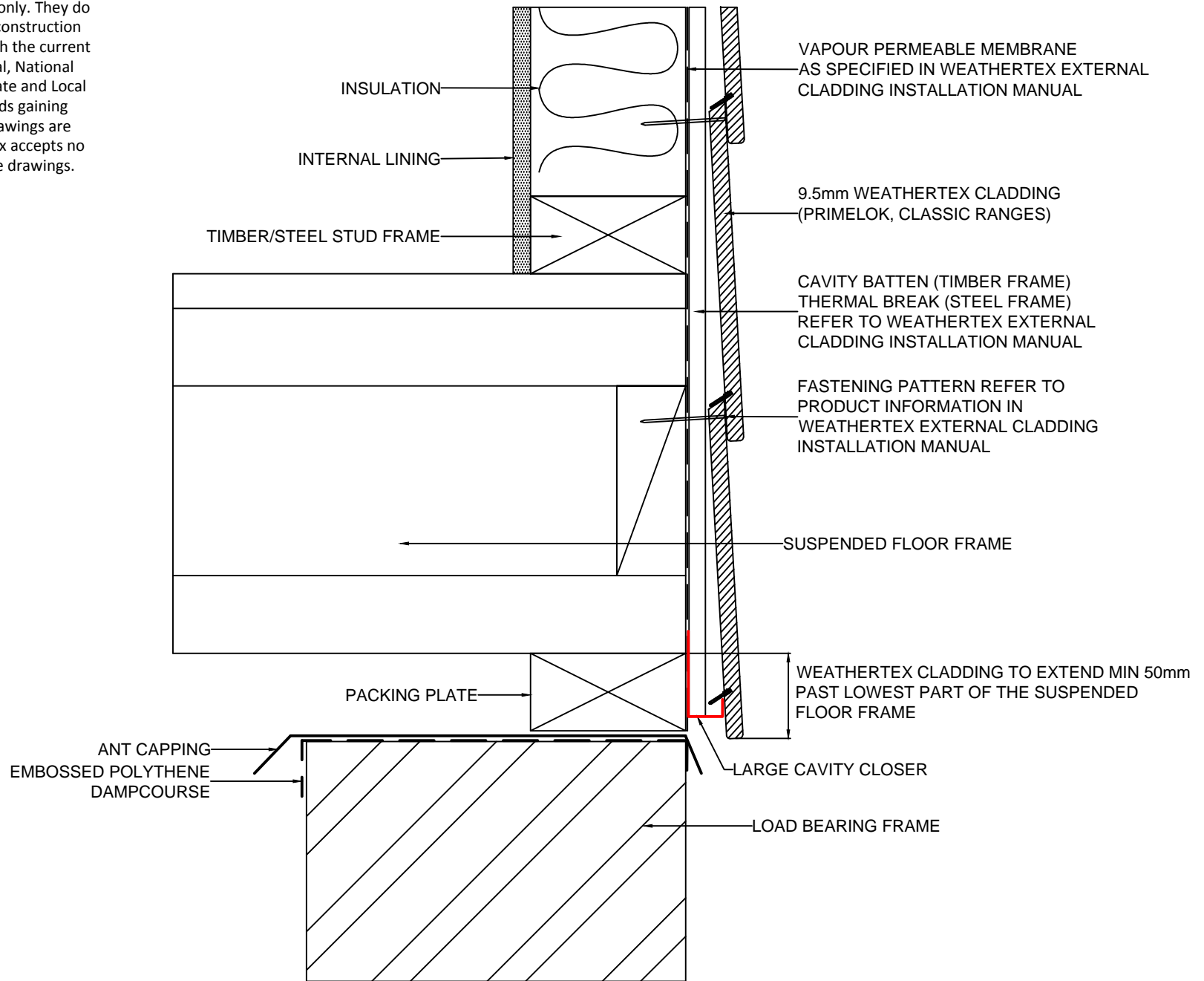
CHECKED BY:
 R.STUART

DATE:
 21.07.20

DRAWING No.:
 CD-CF-23

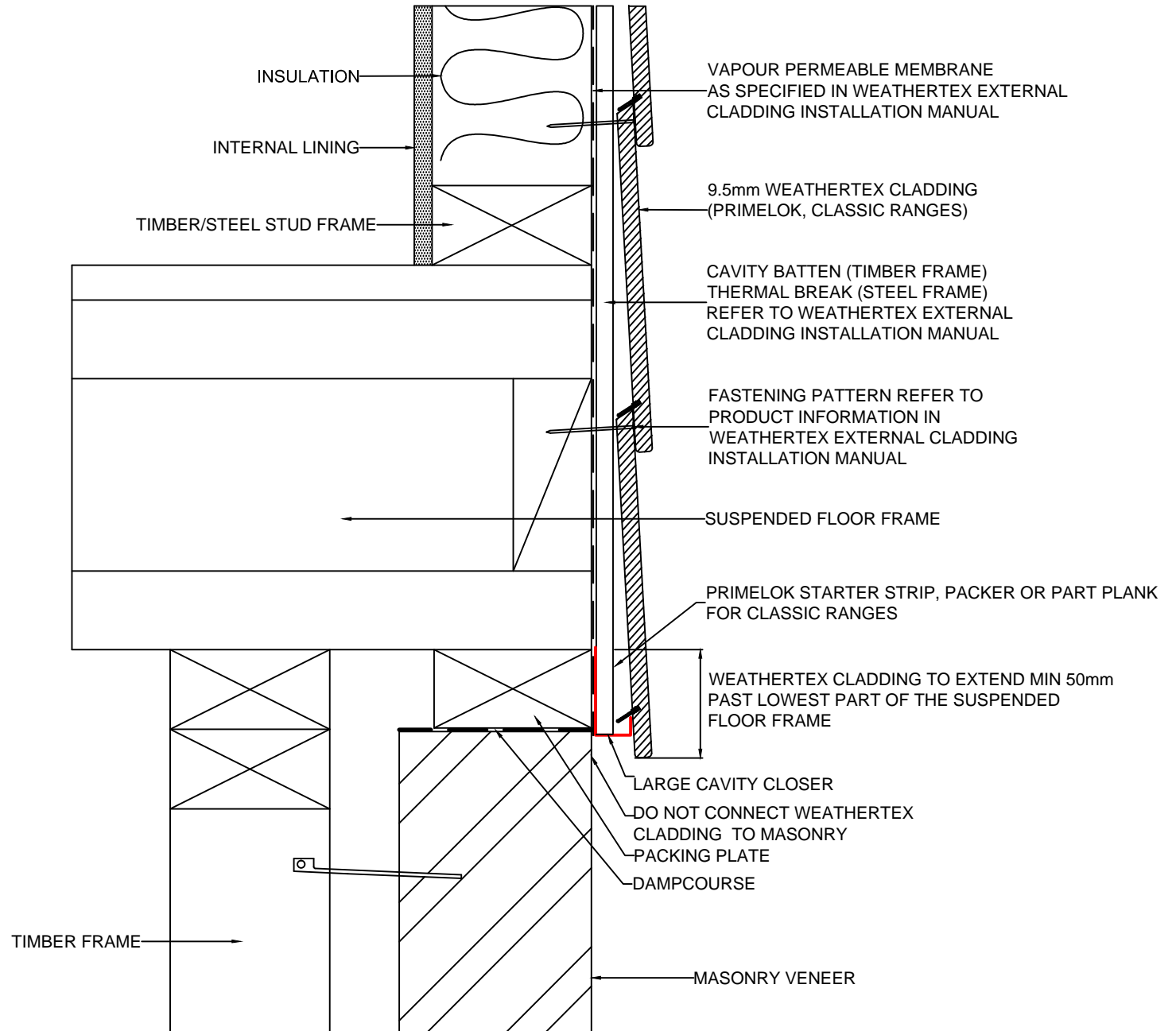
SHT SIZE
 A4

These drawings are for information only. They do not contain full details required for construction and must be used in conjunction with the current issue Weathertex Installation Manual, National Construction Code and any other State and Local Regulations. Weathertex recommends gaining professional advice to ensure the drawings are suitable for your project. Weathertex accepts no liability in respect to the use of these drawings.



| | | | | | | | |
|--|---|---------------|----------------------|-------------------------|-------------------|--------------------------|----------------|
| | DRAWING NAME: CAVITY FIX INSTALLATION - CLADDING OVER PIER (PRIMELOK, CLASSIC RANGES) | SCALE: NTS | DRAWN BY: A.MOATE | CHECKED BY: R.STUART | DATE: 22.07.20 | DRAWING No.: CD-CF-25 | SHT SIZE A4 |
|--|---|---------------|----------------------|-------------------------|-------------------|--------------------------|----------------|

These drawings are for information only. They do not contain full details required for construction and must be used in conjunction with the current issue Weathertex Installation Manual, National Construction Code and any other State and Local Regulations. Weathertex recommends gaining professional advice to ensure the drawings are suitable for your project. Weathertex accepts no liability in respect to the use of these drawings.



DRAWING NAME:
CAVITY FIX INSTALLATION - FLUSH WITH VENEER
(PRIMELOK, CLASSIC RANGES)

SCALE:

NTS

DRAWN BY:

A.MOATE

CHECKED BY:

R.STUART

DATE:

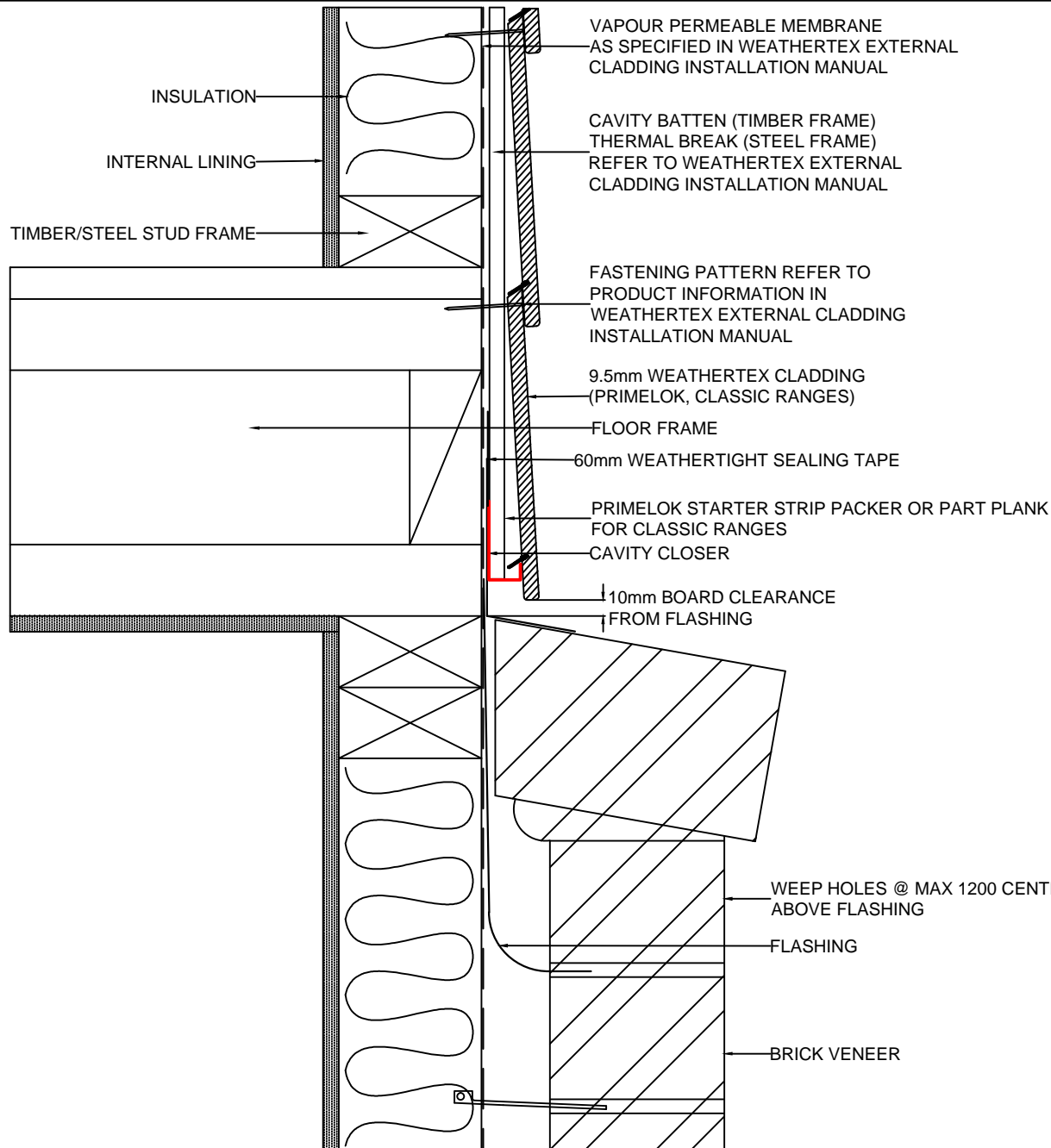
22.07.20

DRAWING No.:

CD-CF-27

SHT SIZE

A4

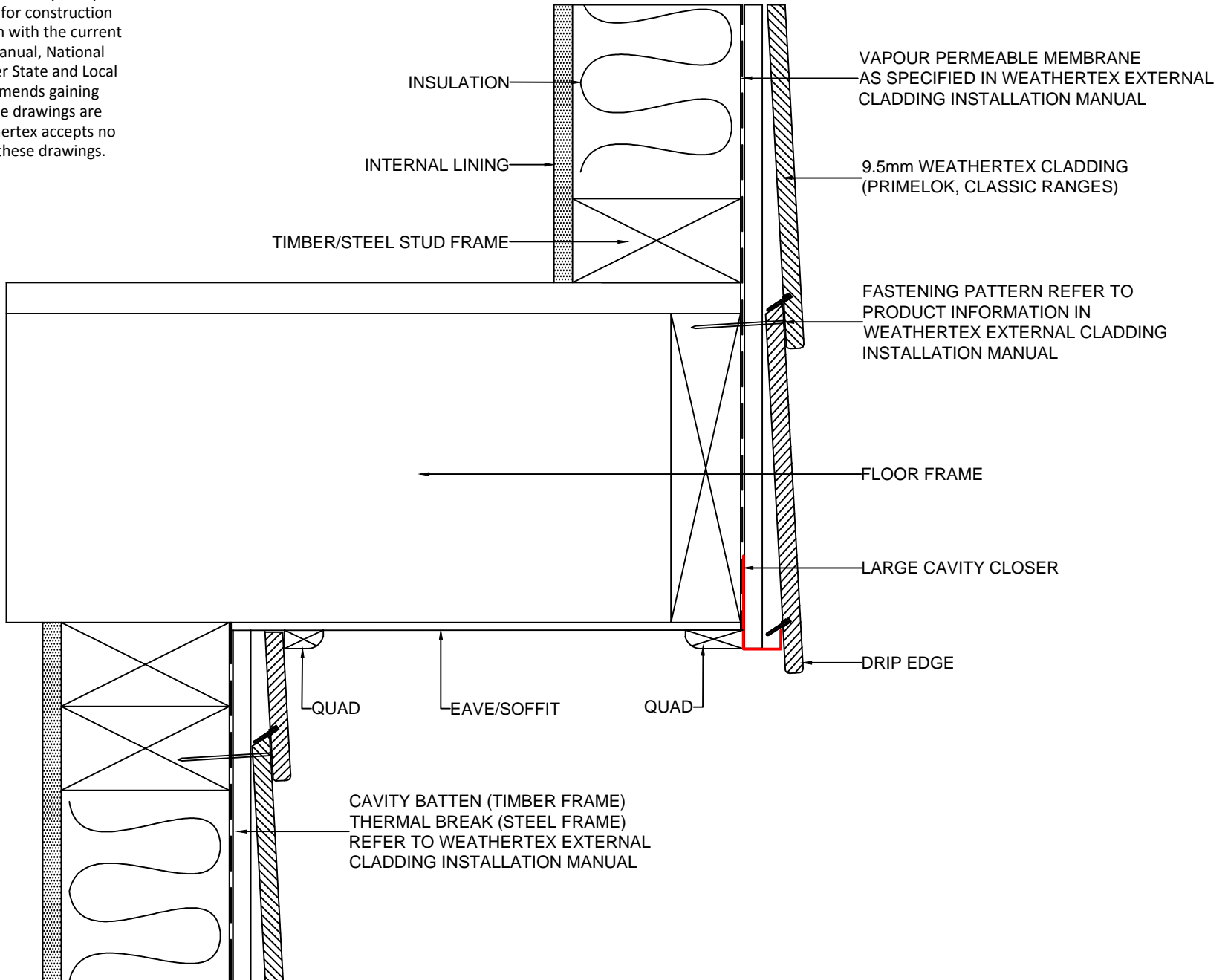


NTRES

These drawings are for information only. They do not contain full details required for construction and must be used in conjunction with the current issue WeatherTex Installation Manual, National Construction Code and any other State and Local Regulations. WeatherTex recommends gaining professional advice to ensure the drawings are suitable for your project. WeatherTex accepts no liability in respect to the use of these drawings.

| | | | | | | | |
|--|--|-----------------------|------------------------------|---------------------------------|---------------------------|----------------------------------|------------------------|
| | <p>DRAWING NAME: CAVITY FIX INSTALLATION - SET BACK OVER BRICK VENEER (PRIMELOK, CLASSIC RANGES)</p> | <p>SCALE: NTS</p> | <p>DRAWN BY: A.MOATE</p> | <p>CHECKED BY: R.STUART</p> | <p>DATE: 22.07.20</p> | <p>DRAWING No.: CD-CF-29</p> | <p>SHT SIZE A4</p> |
|--|--|-----------------------|------------------------------|---------------------------------|---------------------------|----------------------------------|------------------------|

These drawings are for information only. They do not contain full details required for construction and must be used in conjunction with the current issue Weathertex Installation Manual, National Construction Code and any other State and Local Regulations. Weathertex recommends gaining professional advice to ensure the drawings are suitable for your project. Weathertex accepts no liability in respect to the use of these drawings.



DRAWING NAME:
CAVITY FIX INSTALLATION - CANTILEVER ROOF
(PRIMELOK, CLASSIC RANGES)

SCALE:

DRAWN BY:

CHECKED BY:

DATE:

DRAWING No.:

SHT SIZE

NTS

A.MOATE

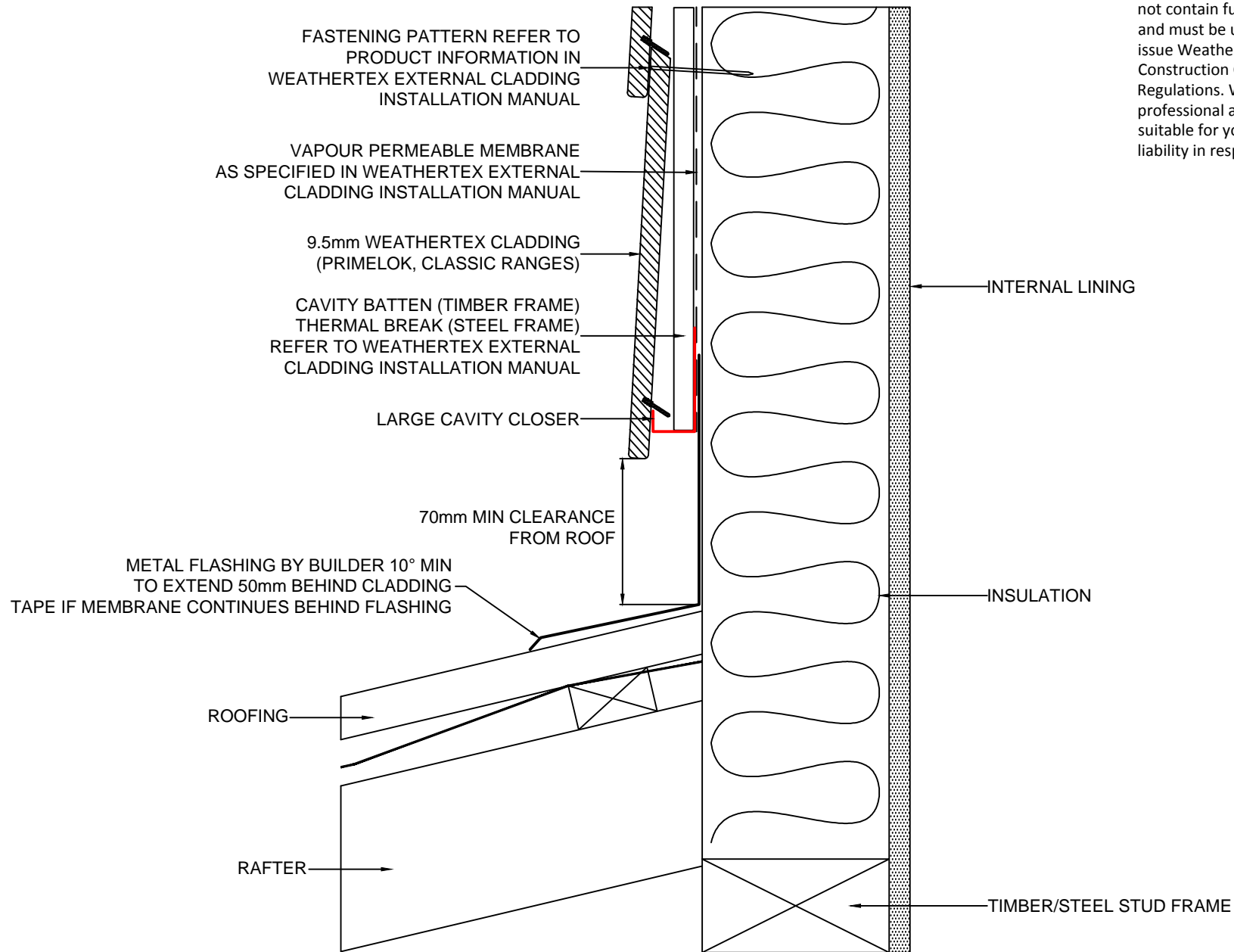
R.STUART

27.07.20

CD-CF-31

A4

These drawings are for information only. They do not contain full details required for construction and must be used in conjunction with the current issue Weathertex Installation Manual, National Construction Code and any other State and Local Regulations. Weathertex recommends gaining professional advice to ensure the drawings are suitable for your project. Weathertex accepts no liability in respect to the use of these drawings.



DRAWING NAME:
CAVITY FIX INSTALLATION - ROOF CLEARANCE
(PRIMELOK, CLASSIC RANGES)

SCALE:
NTS

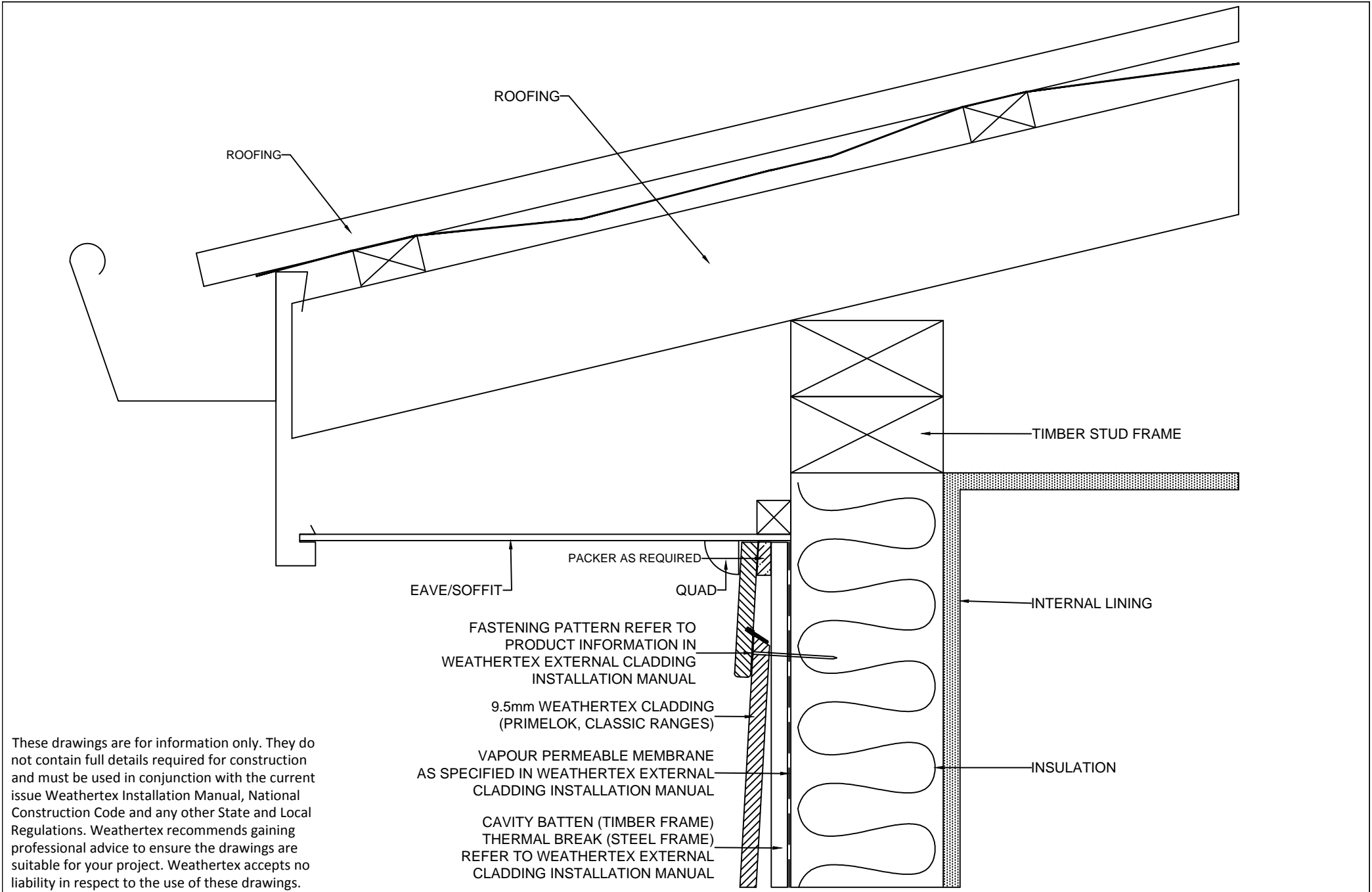
DRAWN BY:
A.MOATE

CHECKED BY:
R.STUART

DATE:
27.07.20

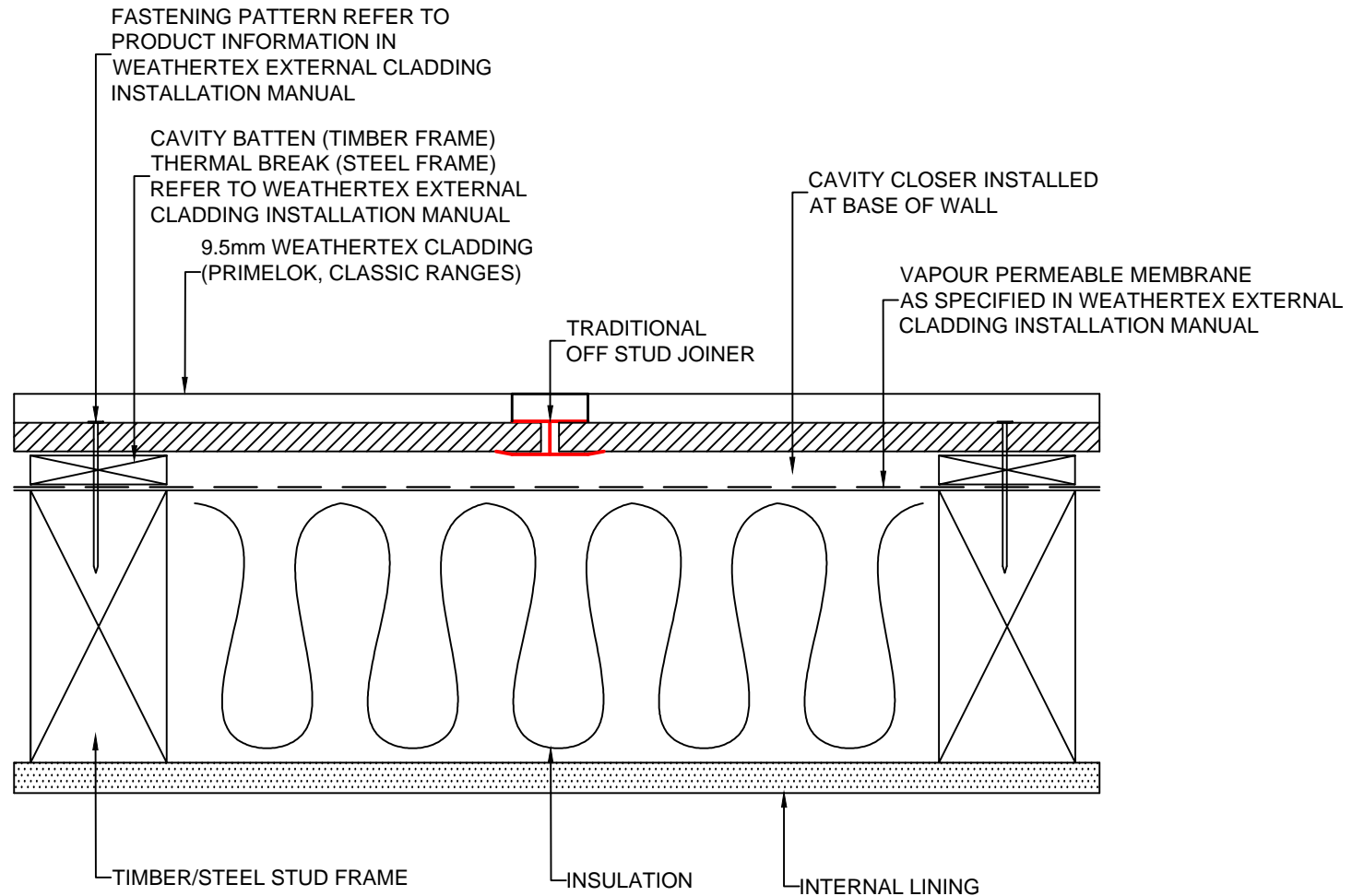
DRAWING No.:
CD-DF-33

SHT SIZE
A4



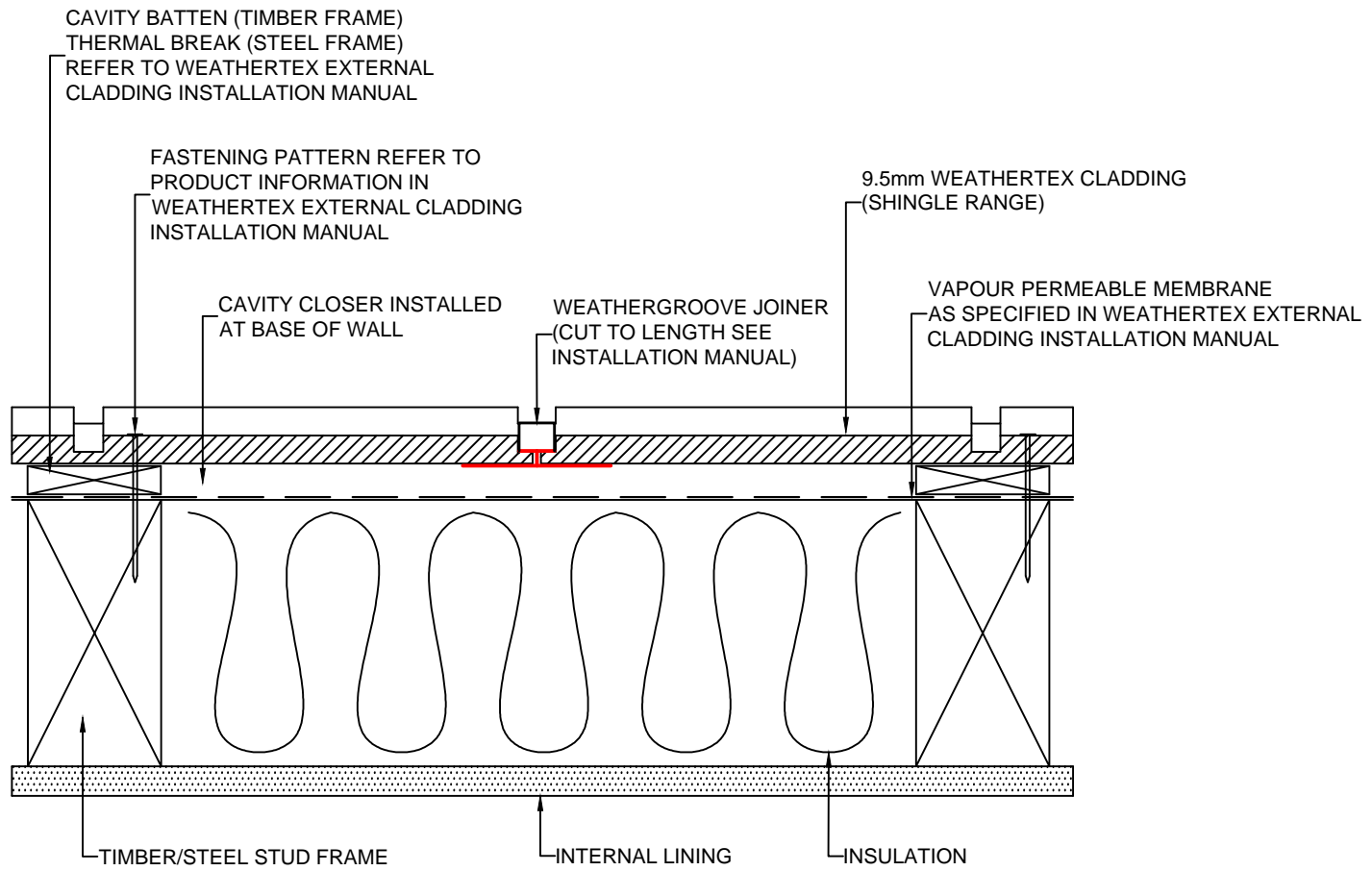
These drawings are for information only. They do not contain full details required for construction and must be used in conjunction with the current issue Weathertex Installation Manual, National Construction Code and any other State and Local Regulations. Weathertex recommends gaining professional advice to ensure the drawings are suitable for your project. Weathertex accepts no liability in respect to the use of these drawings.

| | | | | | | | |
|--|---|---------------|------------------|--------------------|--------------|---------------------|-----------------|
| | DRAWING NAME: CAVITY FIX INSTALLATION - EAVE/SOFFIT (PRIMELOK, CLASSIC RANGES) | SCALE: | DRAWN BY: | CHECKED BY: | DATE: | DRAWING No.: | SHT SIZE |
| | | NTS | A.MOATE | R.STUART | 27.07.20 | CD-CF-35 | A4 |



These drawings are for information only. They do not contain full details required for construction and must be used in conjunction with the current issue Weathertex Installation Manual, National Construction Code and any other State and Local Regulations. Weathertex recommends gaining professional advice to ensure the drawings are suitable for your project. Weathertex accepts no liability in respect to the use of these drawings.

| | | | | | | | |
|--|--|---------------|----------------------|-------------------------|-------------------|--------------------------|----------------|
| | DRAWING NAME: CAVITY FIX INSTALLATION - TRADITIONAL JOINER (PRIMELOK, CLASSIC RANGES (EXC SHINGLES)) | SCALE: NTS | DRAWN BY: A.MOATE | CHECKED BY: R.STUART | DATE: 27.07.20 | DRAWING No.: CD-CF-36 | SHT SIZE A4 |
| | | | | | | | |



These drawings are for information only. They do not contain full details required for construction and must be used in conjunction with the current issue WeatherTex Installation Manual, National Construction Code and any other State and Local Regulations. WeatherTex recommends gaining professional advice to ensure the drawings are suitable for your project. WeatherTex accepts no liability in respect to the use of these drawings.

| | | | | | | | |
|--|--|---------------|----------------------|-------------------------|-------------------|--------------------------|----------------|
| | DRAWING NAME: CAVITY FIX INSTALLATION - WEATHERGROOVE JOINER (SHINGLE RANGE) | SCALE: NTS | DRAWN BY: A.MOATE | CHECKED BY: R.STUART | DATE: 27.07.20 | DRAWING No.: CD-DF-40 | SHT SIZE A4 |
|--|--|---------------|----------------------|-------------------------|-------------------|--------------------------|----------------|