

WEATHERTEX JOINING ACCESSORIES MADE FROM POLYCARBONATE / ABS ALLOY (PC/ABS)

TRADITIONAL JOINERS

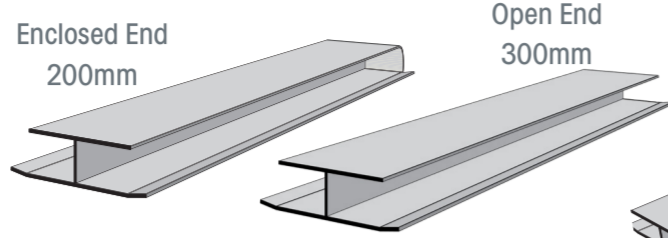
The preferred joining system for Weathertex. Joiners are designed to match their relevant range and profile.



Traditional Offstud Joiner

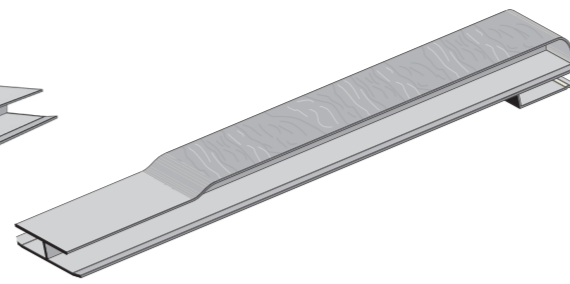
CONCEALED JOINERS

An Additional off stud joining option.



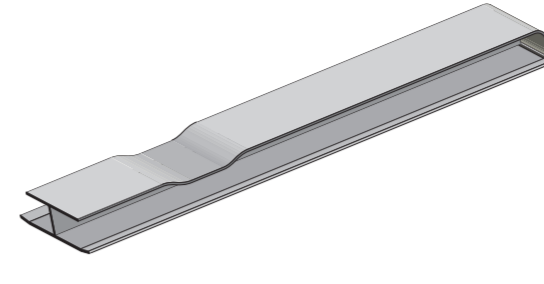
TRADITIONAL JOINERS

For: Classic 200mm Weatherboards, Primelok Classic 200mm, Classic 300mm Weatherboards
Ranges: 200 Smooth | Ruff-Sawn | 300 Smooth



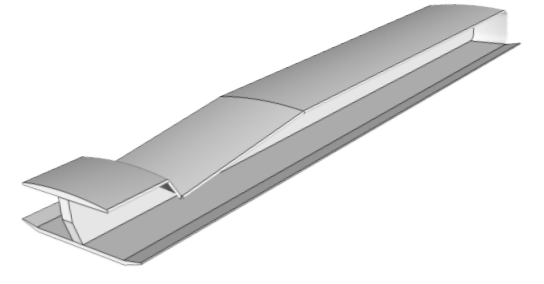
RUSTICATED JOINERS

For: Rusticated Smooth, Rusticated Ruff-Sawn
Ranges: 200 Smooth | 200 Ruff-Sawn



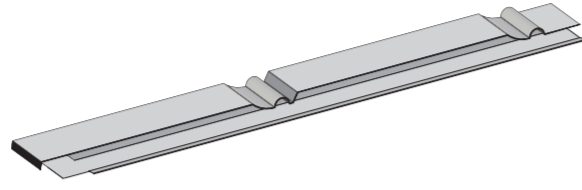
FEDERATION JOINERS

For: Primelok Federation Smooth, Primelok Federation Ruff-Sawn
Ranges: 170 Smooth | 170 Ruff-Sawn



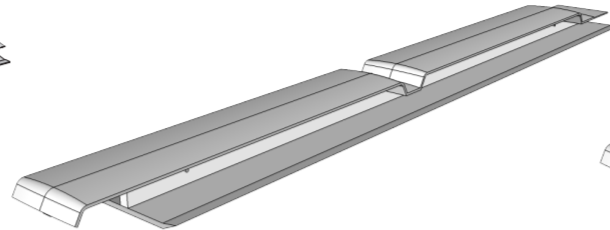
SHADOWOOD JOINER

For: Primelok Shadowood Smooth
Range: 170 Smooth



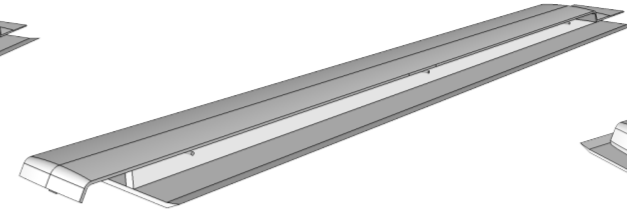
MILLWOOD JOINERS

For: Selflok Millwood Smooth, Selflok Millwood Ruff-Sawn
Ranges: 300 Smooth | 300 Ruff-Sawn



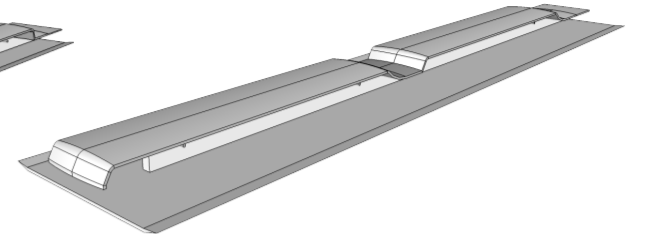
ECOGROOVE 150 JOINERS

For: Selflok Ecogroove 150 Smooth, Selflok Ecogroove 150 Woodsman
Ranges: 300 Smooth | 300 Woodsman



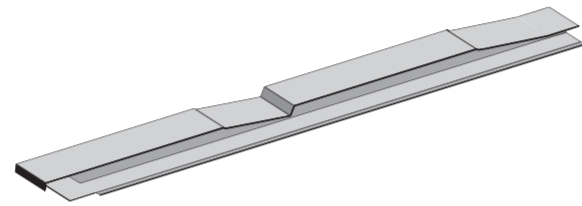
ECOGROOVE 300 JOINERS

For: Selflok Ecogroove 300 Smooth, Selflok Ecogroove 300 Woodsman
Ranges: 300 Smooth | 300 Woodsman



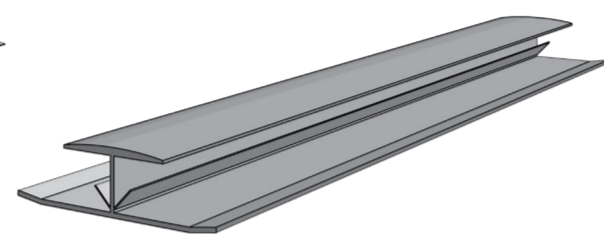
TEXWOOD JOINER

For: Selflok Texwood Smooth
Range: 300 Smooth



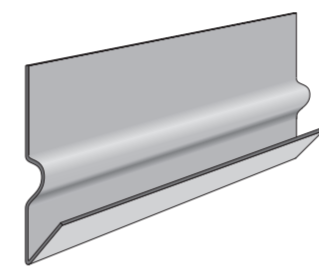
OLD COLONIAL JOINER

For: Selflok Old Colonial Smooth
Range: 300 Smooth



SHINGLE JOINER

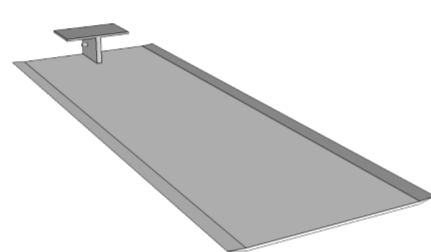
For: Weathertex Wall Shingles
Length: 355mm



PRIMELOK STARTER STRIP

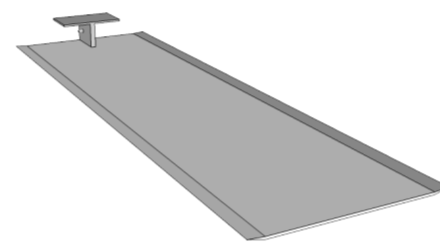
For: All Weathertex Primelok Weatherboards
Length: 1830mm

Made from Colorbond. Used as the starting link for the first interlocking Primelok weatherboard spline.



170MM CONCEALED JOINER

For: Primelok 170 Weatherboards
Length: 170mm



200MM CONCEALED JOINER

For: Classic 200mm Weatherboards, Primelok 200mm Weatherboards
Length: 200mm



300MM CONCEALED JOINER

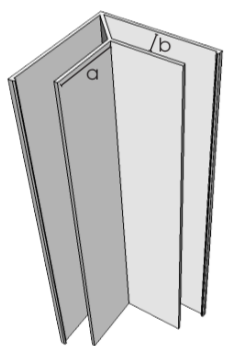
For: Selflok 300mm Weatherboards
Length: 300mm



Finished control joint to be filled with flexible sealant.

300mm Concealed Joiner

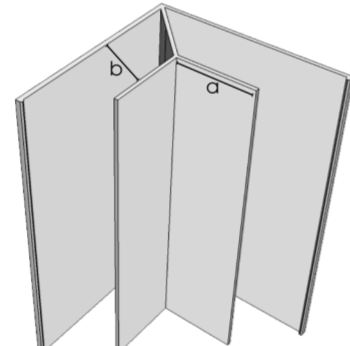
TRIMTEC ACCESSORIES MADE FROM ANODISED ALUMINIUM



SMALL INTERNAL LF CORNER

For: Selflok Weatherboards, Weathergroove, EcoWall, Rubix

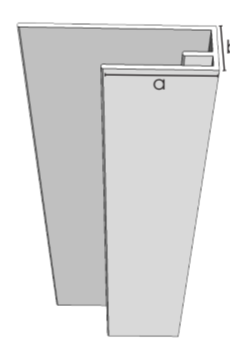
L = 3660mm
a = 27mm
b = 11mm



LARGE INTERNAL LF CORNER

For: Primelok Weatherboards, Rusticated, Classic Weatherboards

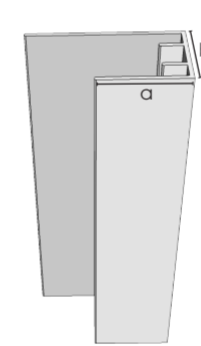
L = 3000mm
a = 27mm
b = 21mm



SMALL END STOP

For: Selflok Weatherboards, Weathergroove, EcoWall, Rubix

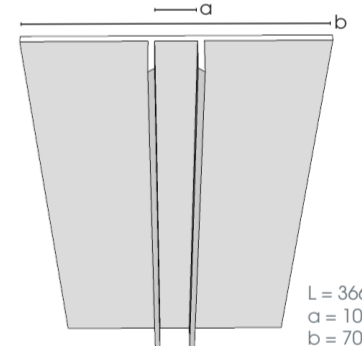
L = 3660mm
a = 27mm
b = 11mm



LARGE END STOP

For: Primelok Weatherboards, Rusticated, Classic Weatherboards

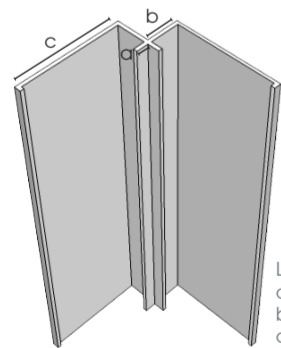
L = 3660mm
a = 27mm
b = 21mm



DEEP CHANNEL JOINER

For: EcoWall
Length: 3660mm

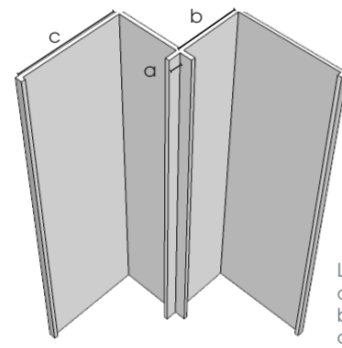
L = 3660mm
a = 10mm
b = 70mm



SMALL INTERNAL CORNER

For: Selflok Weatherboards, Weathergroove, EcoWall, Rubix

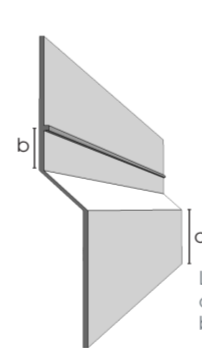
L = 3660mm
a = 4mm
b = 11mm
c = 35mm



LARGE INTERNAL CORNER

For: Primelok Weatherboards, Rusticated, Classic Weatherboards

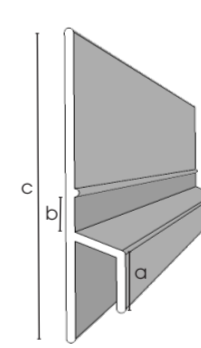
L = 3000mm
a = 4mm
b = 21mm
c = 35mm



Z FLASHING

For: Weathergroove, EcoWall - Other products as required
Length: 3660mm

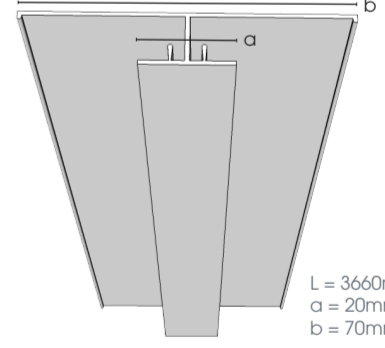
L = 3660mm
a = 27mm
b = 10mm



SMALL Z FLASHING

Length: 3670mm

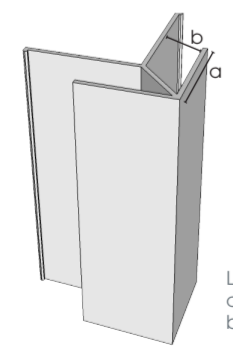
L = 3670mm
a = 10mm
b = 10mm
c = 73mm



LONG VERTICAL JOINER

For: Selflok Weatherboards, Weathergroove, EcoWall
Length: 3660mm

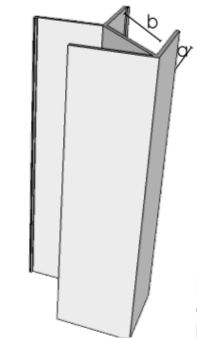
L = 3660mm
a = 20mm
b = 70mm



SMALL EXTERNAL LF CORNER

For: Selflok Weatherboards, Weathergroove, EcoWall, Rubix

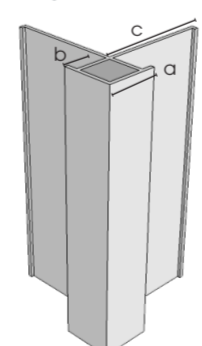
L = 3660mm
a = 27mm
b = 11mm



LARGE EXTERNAL LF CORNER

For: Primelok Weatherboards, Rusticated, Classic Weatherboards

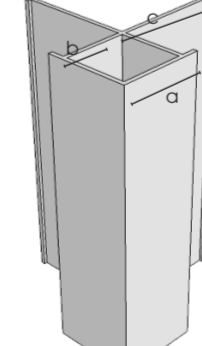
L = 3000mm
a = 27mm
b = 21mm



SMALL EXTERNAL CORNER

For: Selflok Weatherboards, Weathergroove, EcoWall, Rubix

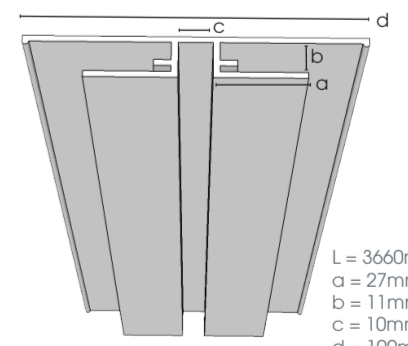
L = 3660mm
a = 17mm
b = 11mm
c = 35mm



LARGE EXTERNAL CORNER

For: Primelok Weatherboards, Rusticated, Classic Weatherboards

L = 3000mm
a = 27mm
b = 11mm
c = 35mm



LF DEEP CHANNEL JOINER

Length: 3660mm

L = 3660mm
a = 27mm
b = 11mm
c = 10mm
d = 100mm

CAVITY WALL SYSTEM MADE FROM COLORBOND (CLOSER) AND WEATHERTEX (BATTENS)

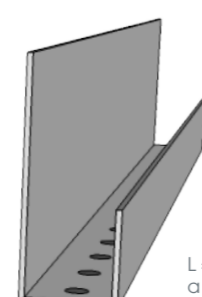
Note: Cavity wall system must be used with Rubix Panel Installation



SMALL CAVITY CLOSER

Use with: 10mm polystyrene thermal break strips

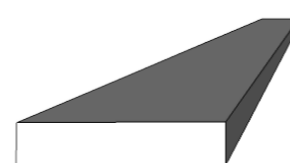
L = 1830mm
a = 10mm



LARGE CAVITY CLOSER

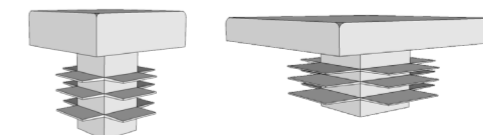
Use with: 20mm softwood thermal battens or polystyrene thermal break strips.

L = 1830mm
a = 20mm



CAVITY BATTENS

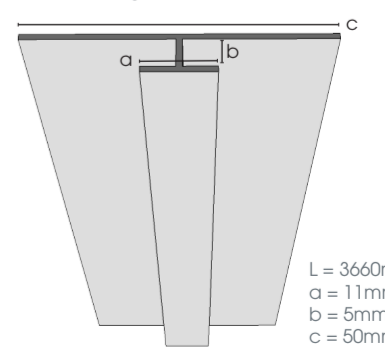
For: All cavity constructions
1220mm x 45mm, 9.5mm thick



CORNER PLUGS (Small & Large)

For use with: Small or Large External Corner

Last updated: June 2019



WEATHERGROOVE JOINERS

For: Weathergroove
Length: 2440, 2745, 3660 mm
Required for use to obtain 25 year warranty for primed and gives off stud jointing method

L = 3660mm
a = 11mm
b = 5mm
c = 50mm