

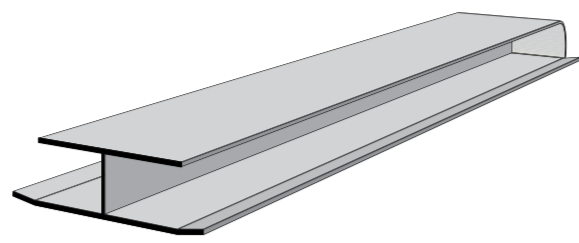
WEATHERTEX JOINING ACCESSORIES MADE FROM POLYCARBONATE / ABS ALLOY (PC/ABS)

TRADITIONAL JOINERS

The preferred joining system for Weathertex. Joiners are designed to match their relevant range and profile.

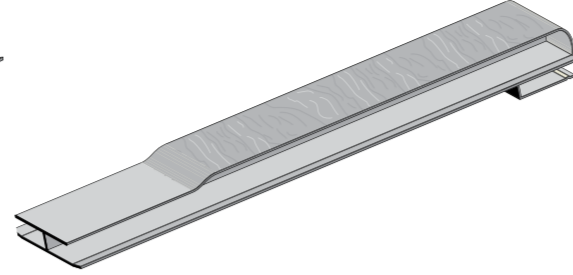


Traditional Offstud Joiner



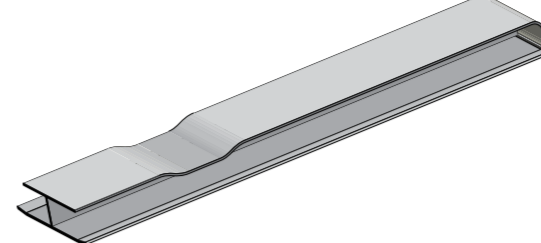
TRADITIONAL JOINERS

For: Classic 200mm Weatherboards, Primelok Classic 200mm, Classic 300mm Weatherboards
Ranges: 200 Smooth | Ruff-Sawn | 300 Smooth



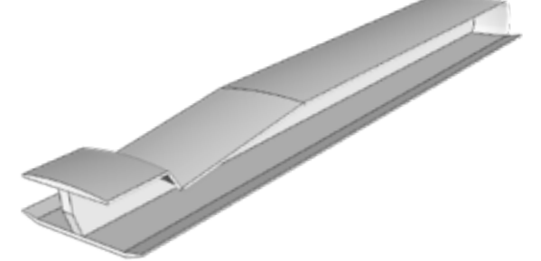
RUSTICATED JOINERS

For: Rusticated Smooth, Rusticated Ruff-Sawn
Ranges: 200 Smooth | 200 Ruff-Sawn



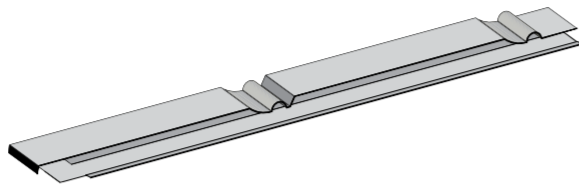
FEDERATION JOINERS

For: Primelok Federation Smooth, Primelok Federation Ruff-Sawn
Ranges: 170 Smooth | 170 Ruff-Sawn



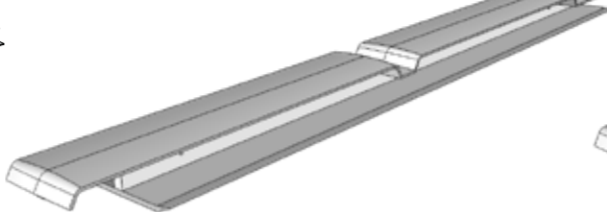
SHADOWOOD JOINER

For: Primelok Shadowood Smooth
Range: 170 Smooth



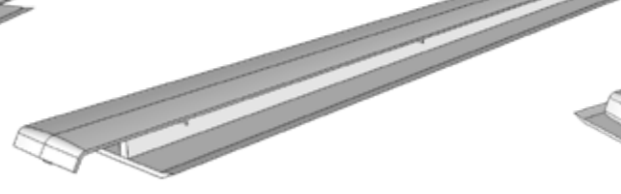
MILLWOOD JOINERS

For: Selflok Millwood Smooth, Selflok Millwood Ruff-Sawn
Ranges: 300 Smooth | 300 Ruff-Sawn



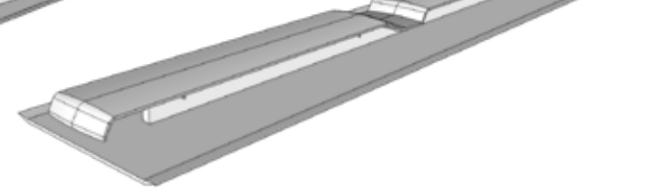
ECOGROOVE 150 JOINERS

For: Selflok Ecogroove 150 Smooth, Selflok Ecogroove 150 Woodsman
Ranges: 300 Smooth | 300 Woodsman



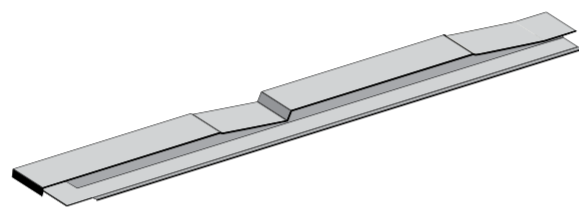
ECOGROOVE 300 JOINERS

For: Selflok Ecogroove 300 Smooth, Selflok Ecogroove 300 Woodsman
Ranges: 300 Smooth | 300 Woodsman



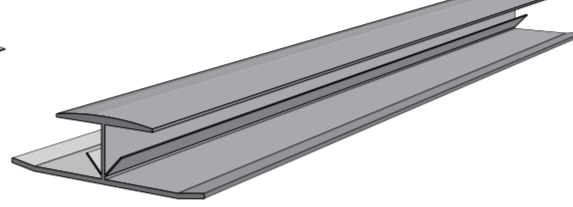
TEXWOOD JOINER

For: Selflok Texwood Smooth
Range: 300 Smooth



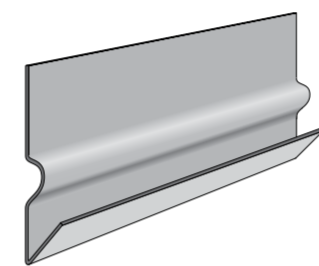
OLD COLONIAL JOINER

For: Selflok Old Colonial Smooth
Range: 300 Smooth



SHINGLE JOINER

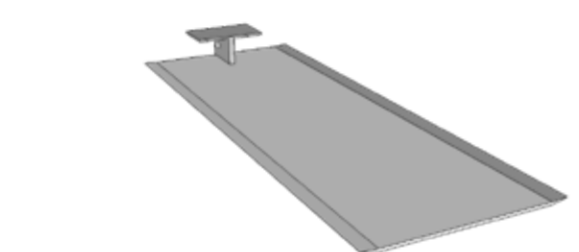
For: Weathertex Wall Shingles
Length: 355mm



PRIMELOK STARTER STRIP

For: All Weathertex Primelok Weatherboards
Length: 1830mm

Made from Colorbond. Used as the starting link for the first interlocking Primelok weatherboard spline.



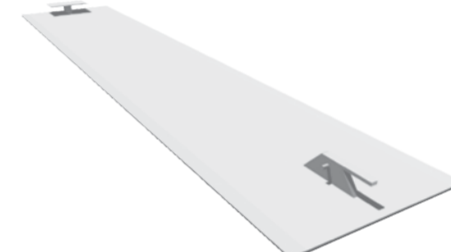
170MM CONCEALED JOINER

For: Primelok 170 Weatherboards
Length: 170mm



200MM CONCEALED JOINER

For: Classic 200mm Weatherboards, Primelok 200mm Weatherboards
Length: 200mm



300MM CONCEALED JOINER

For: Selflok 300mm Weatherboards
Length: 300mm



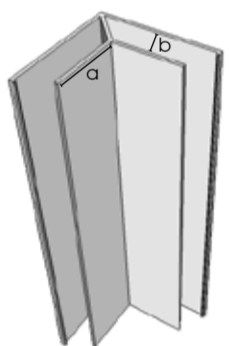
Finished control joint to be filled with flexible sealant.

300mm Concealed Joiner

CONCEALED JOINERS

An Additional off stud joining option.

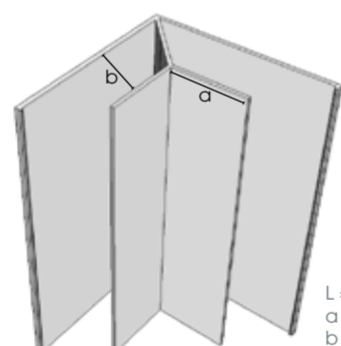
TRIMTEC ACCESSORIES MADE FROM ANODISED ALUMINIUM



L = 3660mm
a = 27mm
b = 11mm

SMALL INTERNAL LF CORNER

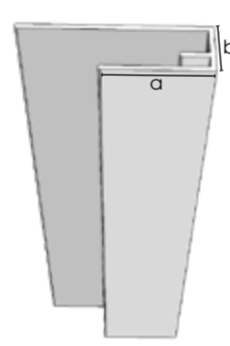
For: Selflok Weatherboards, Weathergroove, EcoWall, Rubix



L = 3660mm
a = 27mm
b = 21mm

LARGE INTERNAL LF CORNER

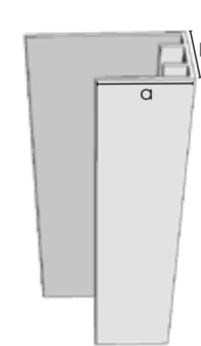
For: Primelok Weatherboards, Rusticated, Classic Weatherboards



L = 3660mm
a = 27mm
b = 11mm

SMALL END STOP

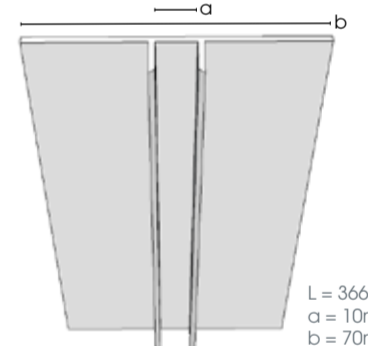
For: Selflok Weatherboards, Weathergroove, EcoWall, Rubix



L = 3660mm
a = 27mm
b = 21mm

LARGE END STOP

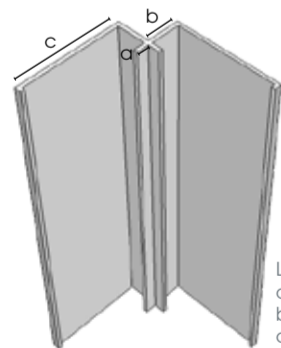
For: Primelok Weatherboards, Rusticated, Classic Weatherboards



L = 3660mm
a = 10mm
b = 70mm

DEEP CHANNEL JOINER

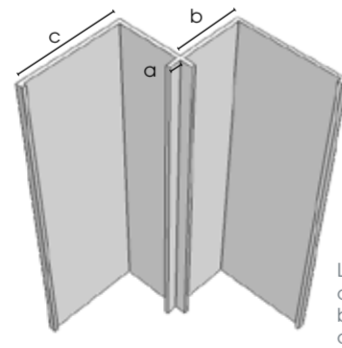
For: EcoWall
Length: 3660mm



L = 3660mm
a = 4mm
b = 11mm
c = 35mm

SMALL INTERNAL CORNER

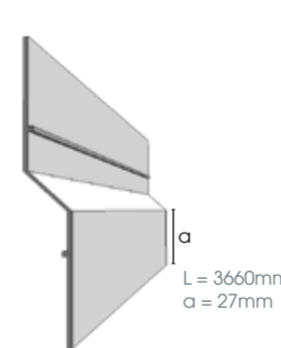
For: Selflok Weatherboards, Weathergroove, EcoWall, Rubix



L = 3000mm
a = 4mm
b = 21mm
c = 35mm

LARGE INTERNAL CORNER

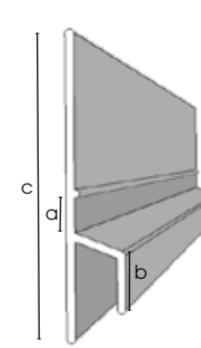
For: Primelok Weatherboards, Rusticated, Classic Weatherboards



L = 3660mm
a = 27mm

Z FLASHING

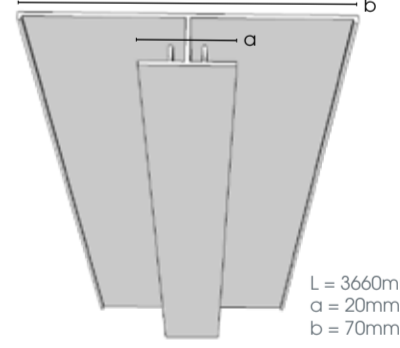
For: Weathergroove, EcoWall - Other products as required
Length: 3660mm



L = 3670mm
a = 15mm
b = 10mm
c = 73mm

SMALL Z FLASHING

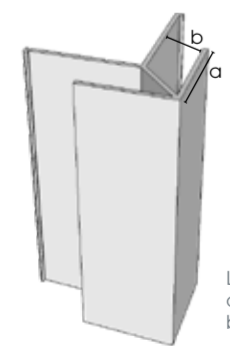
Length: 3670mm



L = 3660mm
a = 20mm
b = 70mm

LONG VERTICAL JOINER

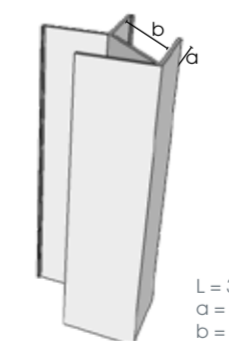
For: Selflok Weatherboards, Weathergroove, EcoWall
Length: 3660mm



L = 3660mm
a = 27mm
b = 11mm

SMALL EXTERNAL LF CORNER

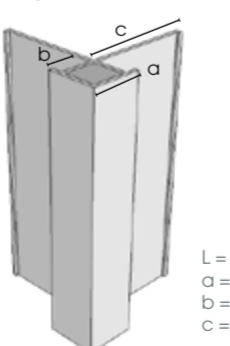
For: Selflok Weatherboards, Weathergroove, EcoWall, Rubix



L = 3660mm
a = 27mm
b = 21mm

LARGE EXTERNAL LF CORNER

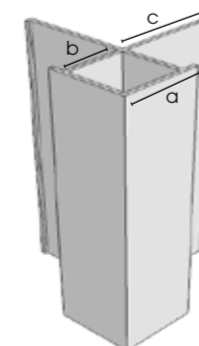
For: Primelok Weatherboards, Rusticated, Classic Weatherboards



L = 3660mm
a = 17mm
b = 11mm
c = 35mm

SMALL EXTERNAL CORNER

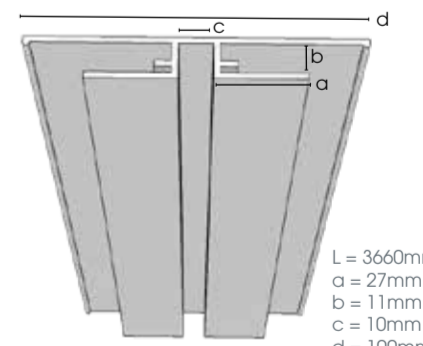
For: Selflok Weatherboards, Weathergroove, EcoWall, Rubix



L = 3660mm
a = 27mm
b = 11mm
c = 35mm

LARGE EXTERNAL CORNER

For: Primelok Weatherboards, Rusticated, Classic Weatherboards



L = 3660mm
a = 27mm
b = 11mm
c = 10mm
d = 100mm

LF DEEP CHANNEL JOINER

Length: 3660mm

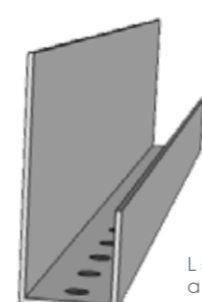
CAVITY WALL SYSTEM MADE FROM COLORBOND (CLOSER) AND WEATHERTEX (BATTENS)



L = 1830mm
a = 10mm

SMALL CAVITY CLOSER

Use with: 10mm polystyrene thermal break strips



L = 1830mm
a = 20mm

LARGE CAVITY CLOSER

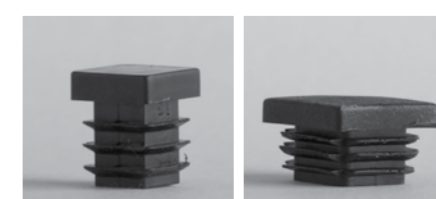
Use with: 20mm softwood thermal battens or polystyrene thermal break strips.



CAVITY BATTENS

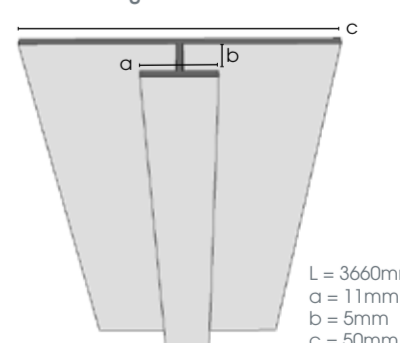
For: All cavity constructions
1220mm x 45mm, 9.5mm thick

Note: Cavity wall system must be used with Rubix Panel Installation



CORNER PLUGS (Small & Large)

For use with: Small or Large External Corner



L = 3660mm
a = 11mm
b = 5mm
c = 50mm

WEATHERGROOVE JOINERS

For: Weathergroove
Length: 2440, 2745, 3660 mm
Required for use to obtain 25 year warranty and gives off stud jointing method